

2003 HOCKING COUNTY HIGHWAY MAP



County Engineer WILLIAM R. SHAW P.E., P.S.

E-Mail - engineer@ohiohills.com E-Mail - bshaw@ohiohills.com Web Page - www.hockingengineer.com

County Commissioners GARY STARNER - ROGER HINERMAN - GREG GREEN E-Mail - kwalker@co.hocking.oh.us

Issued by Hocking County Engineer's Office Not For Resale

OFFICE OF HOCKING COUNTY ENGINEER 1286 CALIFORNIA AVE Phone 740-385-8543 HOCKING COUNTY DRAFTING DEPARTMENT 2nd Floor Courthouse Corner of Market St. and Main St. Phone 740-385-8546

COUNTY STATISTICS County Organized March 1, 1818 Population (2000) 28,241 Highest Elevation 1,225 feet (Perry 2) State Roads 168.10 miles County Roads 210.71 miles Township Roads 412.82 miles TOTAL ROADS 791.63 miles

Table with 2 columns: CITY and INCORPORATED VILLAGES. Lists cities like Logan, Marion, and villages like Laurelville, New Straitsville.

Table with 2 columns: VILLAGES AND COMMUNITIES. Lists locations like Buchtel, Laurelville, and their corresponding locations.

Table with 2 columns: STATE PARKS AND POINTS OF INTEREST. Lists locations like Old Man's Cave, Park Ranger Station, Campground Office.

Table with 2 columns: U.S. HIGHWAY and STATE HIGHWAYS. Lists highway numbers and their locations.

Table with 2 columns: STREETS, ROADS AND HIGHWAYS. Lists street names and their locations.

Table with 2 columns: STREETS, ROADS AND HIGHWAYS. Lists street names and their locations.

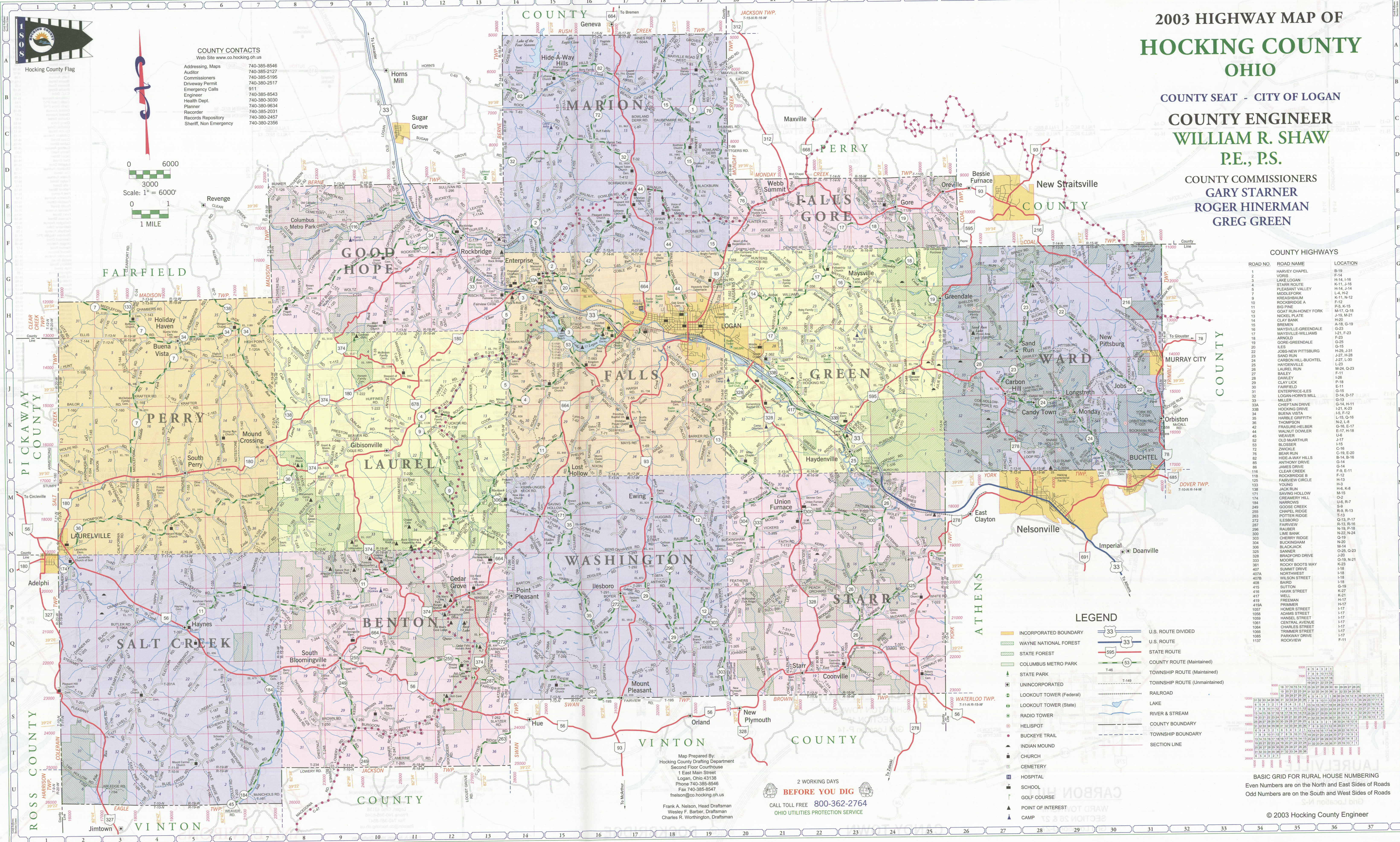


Table with 2 columns: STREETS, ROADS AND HIGHWAYS. Lists street names and their locations.

2003 HIGHWAY MAP OF HOCKING COUNTY OHIO

COUNTY SEAT - CITY OF LOGAN COUNTY ENGINEER WILLIAM R. SHAW P.E., P.S.

COUNTY COMMISSIONERS GARY STARNER ROGER HINERMAN GREG GREEN

COUNTY HIGHWAYS ROAD NO. ROAD NAME LOCATION

Table with 3 columns: ROAD NO., ROAD NAME, LOCATION. Lists various roads and their locations.

Table with 3 columns: ROAD NO., ROAD NAME, LOCATION. Lists various roads and their locations.

Table with 3 columns: ROAD NO., ROAD NAME, LOCATION. Lists various roads and their locations.

Basic Grid for Rural House Numbering Even Numbers are on the North and East Sides of Roads Odd Numbers are on the South and West Sides of Roads

© 2003 Hocking County Engineer