

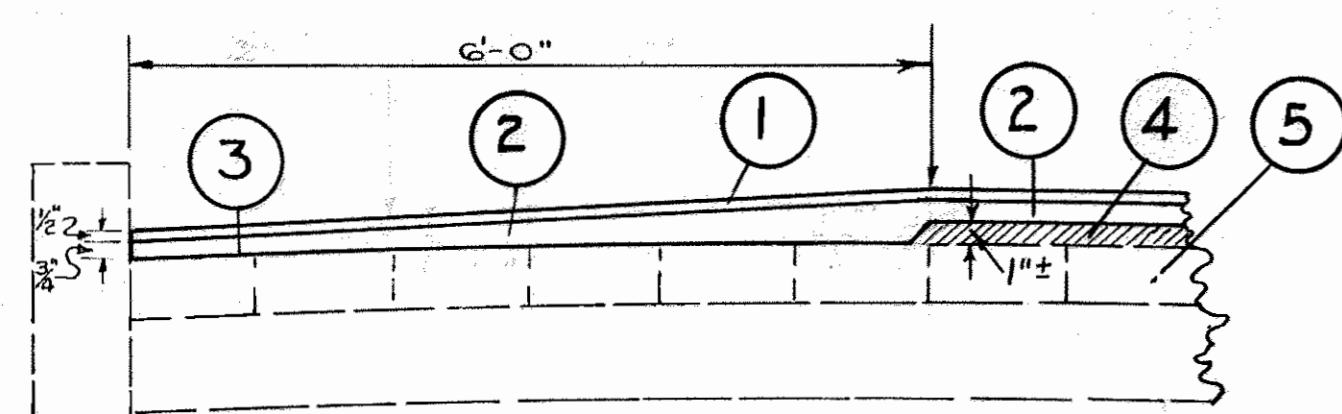
FED. RD. DIST. NO.	STATE	PROJECT	FISCAL YEAR
10	OHIO		1943

2
7

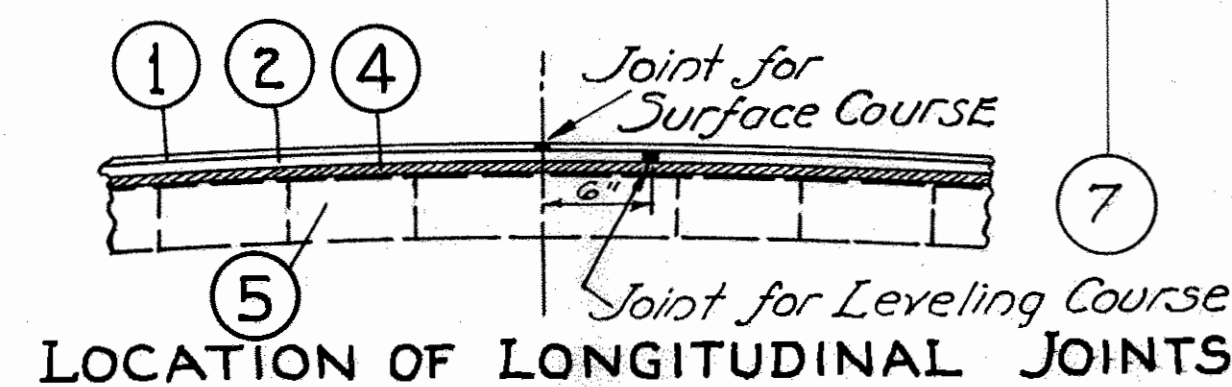
S.H. 155 - SEC. "LOGAN" (PT)
S.H. 360 - SEC. "LOGAN" (PT)
HOCKING CO.

TYPICAL SECTION

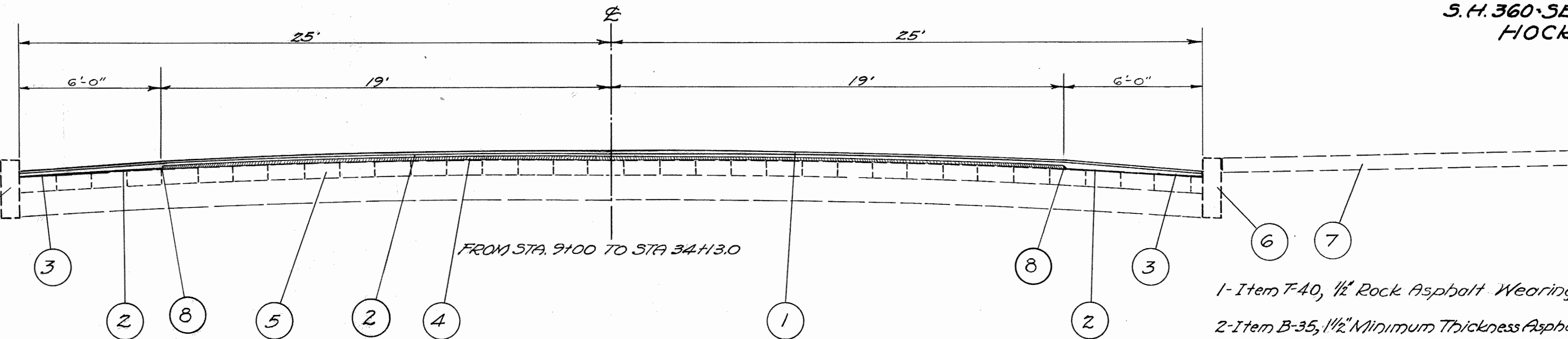
T-40 ON B-35



DETAIL SHOWING CONSTRUCTION BETWEEN EDGE OF PRESENT BITUMINOUS SURFACE AND CURB



LOCATION OF LONGITUDINAL JOINTS



- 1-Item T-40, 1/2" Rock Asphalt Wearing Course.
- 2-Item B-35, 1 1/2" Minimum Thickness Asphaltic Conc. Leveling Course
- 3- Sealing of Existing Gutter (See note.)
- 4-Existing Bituminous Concrete Patching & Resurfacing (1"± thick)
- 5-Existing Brick Pavt. on Rolled Gravel Base
- 6-Existing Stone or Conc. Curb.
- 7-Existing Conc. Sidewalk.
- 8-Trimming Edges of Existing Bituminous Surface.

CONSTRUCTION NOTES

U.S.G.S. DATUM is Basis of all Elevations

CENTER LINE PROFILE ELEVATIONS and Grade of Finished Surface will be approximately 2" higher than present Surface and will follow approximately its line and Grade.

CROWN WILL NOT BE CHANGED.

PAYMENT FOR SALVAGED BRICK WEARING COURSE Item T-91, Will include Reshaping and Compacting present Gravel Base where Required.

SEALING OF EXISTING GUTTER: Prior to placing any asphaltic concrete, but after thorough cleaning, the existing gutter surface shall be sealed with the same bituminous material used in the B-35, Asphaltic Concrete Leveling Course mixture. Only enough material shall be applied to coat the surface for a distance of twenty-four inches from the curb or twenty-four inches for a "V" gutter. The material shall be applied by an approved method at a temperature of from 300 deg. F. to 350 deg. F. The cost of such operation and material shall be included in the price bid for B-35, leveling course.

FEATHERING: Before placing the asphaltic concrete, a paint coat of the same bituminous material used in the mix shall be applied to the area of existing pavement under the area to be feather edged. Payment for this paint coat is to be included in the price bid for the asphaltic concrete.

REMOVAL FOR RE-USE OF EXISTING BRICK WEARING COURSE, ITEM E-8. Where present brick surface course is removed, such removal shall include removal of the bituminous concrete wearing course over it, where this may occur.

THE LEVELING COURSE shall be spread and finished by an approved self-powered, mechanical spreading and finishing paver, meeting the requirements of, and be operated as specified under Sec. T-35.18

ROCK ASPHALT WEARING COURSE, The rock asphalt wearing course shall be spread and finished by an approved self-powered, mechanical spreading and finishing paver, meeting the requirements of, and be operated as specified under Sec. T-35.18

RESETTING CASTINGS: This item shall be performed at completion of the leveling course and prior to placing the surface course.

REMOVAL OF EXISTING BITUMINOUS CONCRETE WEARING COURSE, ITEM E-8. - Present

Bituminous Surface where it is rolled up and rough in spots shall be removed where directed by the Engineer. Removal areas will be clearly marked and edges cut sharply or smoothly by the Contractor so as to permit resurfacing this area with a workmanlike patch. Contractor shall take care not to loosen or disturb present brick surface during such removal. Where loosening of present brick does occur in this operation, same shall be removed and relaid in accordance with Specification T-91 by the Contractor and at his own expense. Cost of cutting edges shall be included in Item E-8.

REMOVAL AND DISPOSAL OF EXISTING CURB, ITEM E-8

Curb removal shall be performed with such care as not to break or damage present concrete sidewalk. Any sidewalk damaged or broken by this operation shall be replaced by the Contractor at his own expense.

CONCRETE CURBS, ITEM I-12, Where new curb is required that abuts against present sidewalk

same may be constructed using wood forms for the face and no back forms. For back form the dirt surface shall be evenly trimmed and vertically faced, and surfaced with one layer of Tar paper extending to surface of present sidewalk. Where there is room for back forms without disturbing present sidewalk both front and back forms will be required. Wood forms may be used.

ITEM E-10 CUTTING ONLY OF EXISTING BITUMINOUS SURFACE COURSE EDGES. This item, made necessary by the spalled, feathery and uneven condition of the present surface, will comprise cutting only of the existing bituminous surface course edges on lines generally parallel with the curbs as Engineer directs. Payment will be at Unit Bid Price per lineal foot for cutting only.

LEVELING COURSE: - Wherever the depth of the leveling course exceeds 2 1/2 inches, the leveling material below the minimum thickness specified on the plan shall be spread and compacted in one or more courses. No course shall exceed three inches in depth when compacted.

SEALING EXISTING EDGES: - Vertical faces of existing work, such as pavements, castings, curbs, etc., against which the new bituminous concrete mixture is to be placed, shall be painted or sealed with the same bituminous material as used in the mixture which shall be applied at a temperature of 300 deg. F. to 350 deg. F. before placing the mixture. The cost of such operations and material shall be included in the price bid for surface course.

NOTES TO GOVERN BUILDING UNDER TRAFFIC

ROAD WILL BE OPEN TO TRAFFIC AT ALL TIMES and Contractors operations shall be planned accordingly. In the event it becomes necessary to restrict the roadway to one-way traffic or any traffic lanes to one-way traffic, the Contractor shall provide sufficient lights, signs and Signalmen at all times such one-way traffic lane is in operation.

SURFACE COURSE one half shall be laid while traffic is being carried in a double lane on the other half; parking on such open half to be prohibited during this operation.

TRAFFIC GUARDS shall be employed by the Contractor where necessary, in the opinion of the Engineer, to properly direct traffic. Such guards shall be furnished with bright red flags at least 18" x 12", and will be drilled and instructed in their duties.

Approved: *Charles August*
9/22-43. *Dist. Eng.*