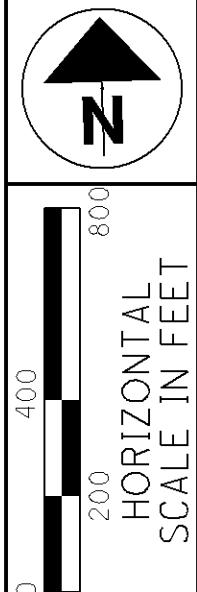


HOC-664-4.08
 SEC-11, TWP-11, RNG-18
 CONGRESS LANDS
 BENTON TOWNSHIP
 HOCKING COUNTY, OHIO

- MONUMENT LEGEND
- ☐ STONE FOUND
 - FENCE POST
 - ⊕ R.R.S. FOUND
 - ⊕ R.R.S. SET
 - P.K. NAIL FOUND
 - ⊙ CONC. MONUMENT FD.
 - ⊙ REFER. MONUMENT SET
 - REBAR FOUND
 - ⊙ BOLT FOUND
 - IRON PIN FOUND
 - 5/8" REBAR SET



PID NO.
85123

R/W DESIGNER TB
 R/W REVIEWER SER

PROPERTY MAP

HOC-664-4.08

1 / 1
 130
 134

PROJECT (GROUND) COORDINATES OF EXISTING MONUMENTATION FOUND

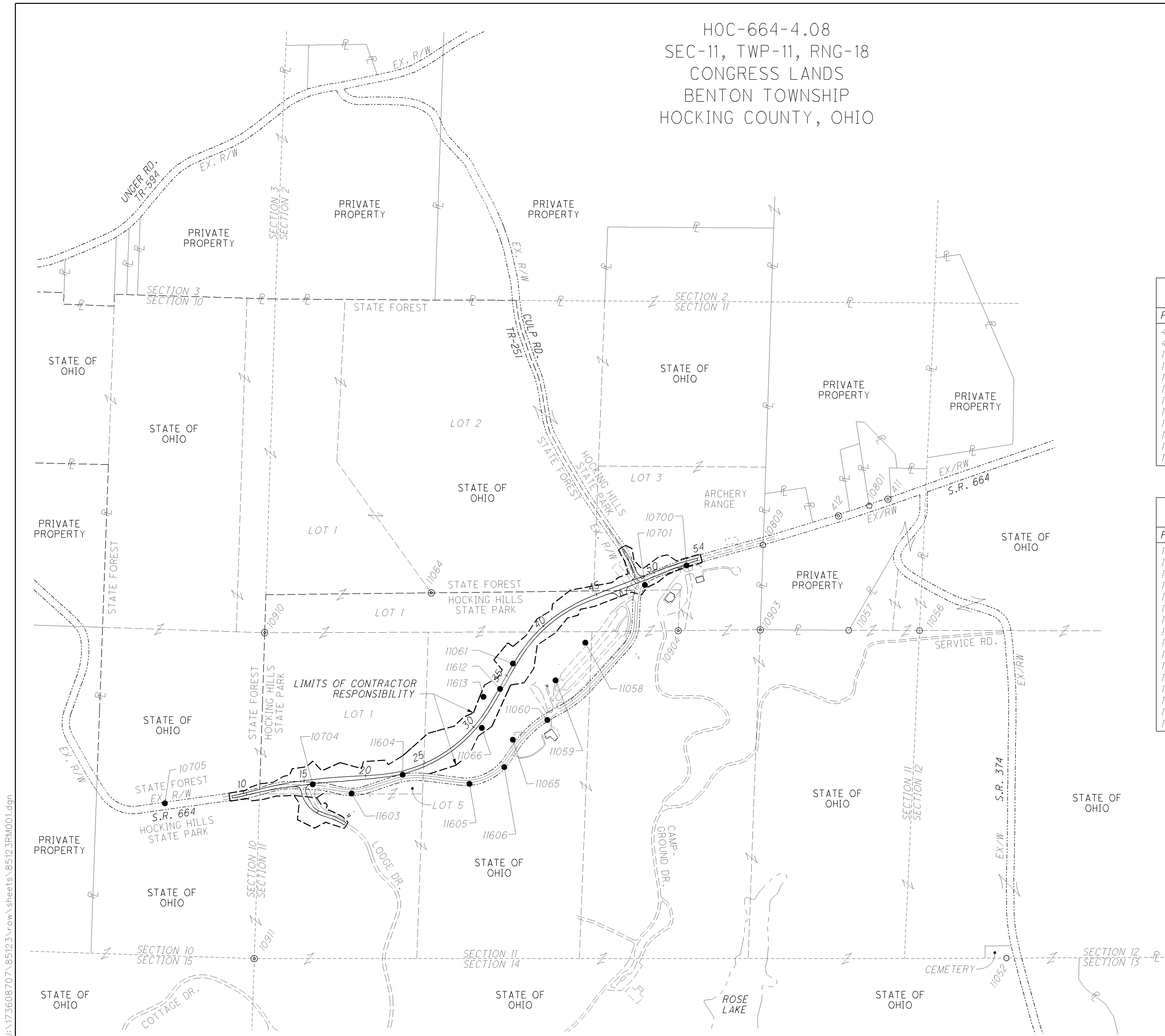
POINT #	NORTHING	EASTING	DESCRIPTION
411	524312.06	1959560.97	CMF-HOC-374-3.73
412	524189.72	1959155.90	CMF-HOC-374-3.73
10801	524263.79	1959407.52	1/2" RBF
10809	523973.63	1958535.13	1/2" RBF (BENT)
10903	523285.45	1958490.07	CMF-DIV. FORESTRY
10904	523300.15	1957824.73	CMF-DIV. FORESTRY
10910	523393.65	1954468.13	CMF-DIV. FORESTRY
10911	520751.96	1954297.67	CMF-DIV. FORESTRY
11052	520557.62	1960402.39	FENCE POST
11056	523237.65	1959782.41	1/2" IPF
11057	523258.97	1959207.80	1/2" IPF
11064	523672.29	1955830.20	CMF-DIV. FORESTRY

PROJECT (GROUND) COORDINATES OF IRON PINS SET AT SURVEY CONTROL POINTS

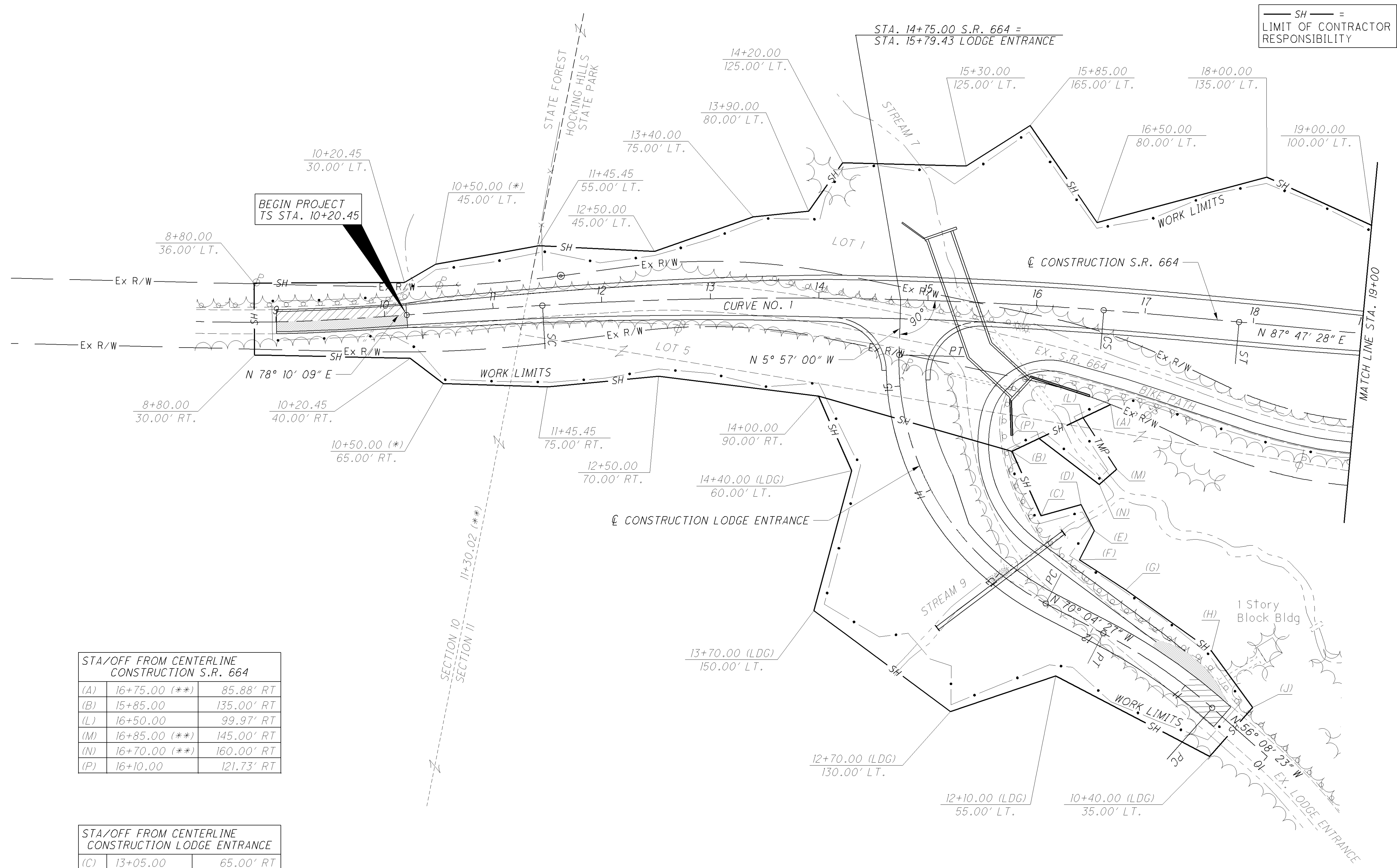
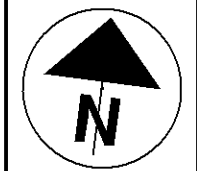
POINT #	NORTHING	EASTING	DESCRIPTION
10700	523828.14	1957909.33	IPS -STANTEC CAP
10701	523679.94	1957565.71	IPS -STANTEC CAP
10704	522150.47	1954817.74	IPS -STANTEC CAP
10705	522034.26	1953614.15	IPS -STANTEC CAP
11058	523227.98	1957067.20	IPS -STANTEC CAP
11059	522929.47	1956815.79	IPS -STANTEC CAP
11060	522610.88	1956738.10	IPS -STANTEC CAP
11061	523076.58	1956474.25	IPS -STANTEC CAP
11065	522459.85	1956453.92	IPS -STANTEC CAP
11066	522562.77	1956204.21	IPS -STANTEC CAP
11603	522065.09	1955131.55	IPS -STANTEC CAP
11604	522204.27	1955550.44	IPS -STANTEC CAP
11605	522112.40	1956089.68	IPS -STANTEC CAP
11606	522238.82	1956376.91	IPS -STANTEC CAP
11612	522875.20	1956363.27	IPS -STANTEC CAP
11613	522814.36	1956226.76	IPS -STANTEC CAP

TO OBTAIN STATE PLANE COORDINATES
 SCALE ABOUT @ C.S. STA. 30+94.17,
 N= 522635.6711, E= 1956208.3799
 USING THE COMBINED SCALE FACTOR:
 0.999898588

REV. BY	DATE	DESCRIPTION



U:\173608707\85123\row\sheet\85123RM001.dgn



BEGIN PROJECT
TS STA. 10+20.45

— SH — =
LIMIT OF CONTRACTOR
RESPONSIBILITY

STA/OFF FROM CENTERLINE CONSTRUCTION S.R. 664		
(A)	16+75.00 (**)	85.88' RT
(B)	15+85.00	135.00' RT
(L)	16+50.00	99.97' RT
(M)	16+85.00 (**)	145.00' RT
(N)	16+70.00 (**)	160.00' RT
(P)	16+10.00	121.73' RT

STA/OFF FROM CENTERLINE CONSTRUCTION LODGE ENTRANCE		
(C)	13+05.00	65.00' RT
(D)	12+70.00	95.00' RT
(E)	12+40.00	80.00' RT
(F)	12+40.00	50.00' RT
(G)	11+89.32	45.00' RT
(H)	11+00.00	40.00' RT
(J)	10+40.00	25.00' RT

- MONUMENT LEGEND**
- STONE FOUND
 - FENCE POST
 - ⊕ R.R.S. FOUND
 - ⊕ R.R.S. SET
 - ⊕ P.K. NAIL FOUND
 - ⊕ CONC. MONUMENT FD.
 - ⊕ REFER. MONUMENT SET
 - ⊕ REBAR FOUND
 - ⊕ BOLT FOUND
 - IRON PIN FOUND
 - I.P.F. WITH I.D. CAP
 - 3/4" BAR SET

**LODGE ENTRANCE
CURVE NO. 1**
 P.I. = Sta. 11+28.82
 $\Delta = 13^\circ 56' 04''$ (LT)
 $Dc = 11^\circ 27' 33''$
 $R = 500.00'$
 $T = 61.10'$
 $L = 121.60'$
 $E = 3.72'$
 $e_{max} = NONE$
 PC Sta. 10+67.72
 PT Sta. 11+89.32

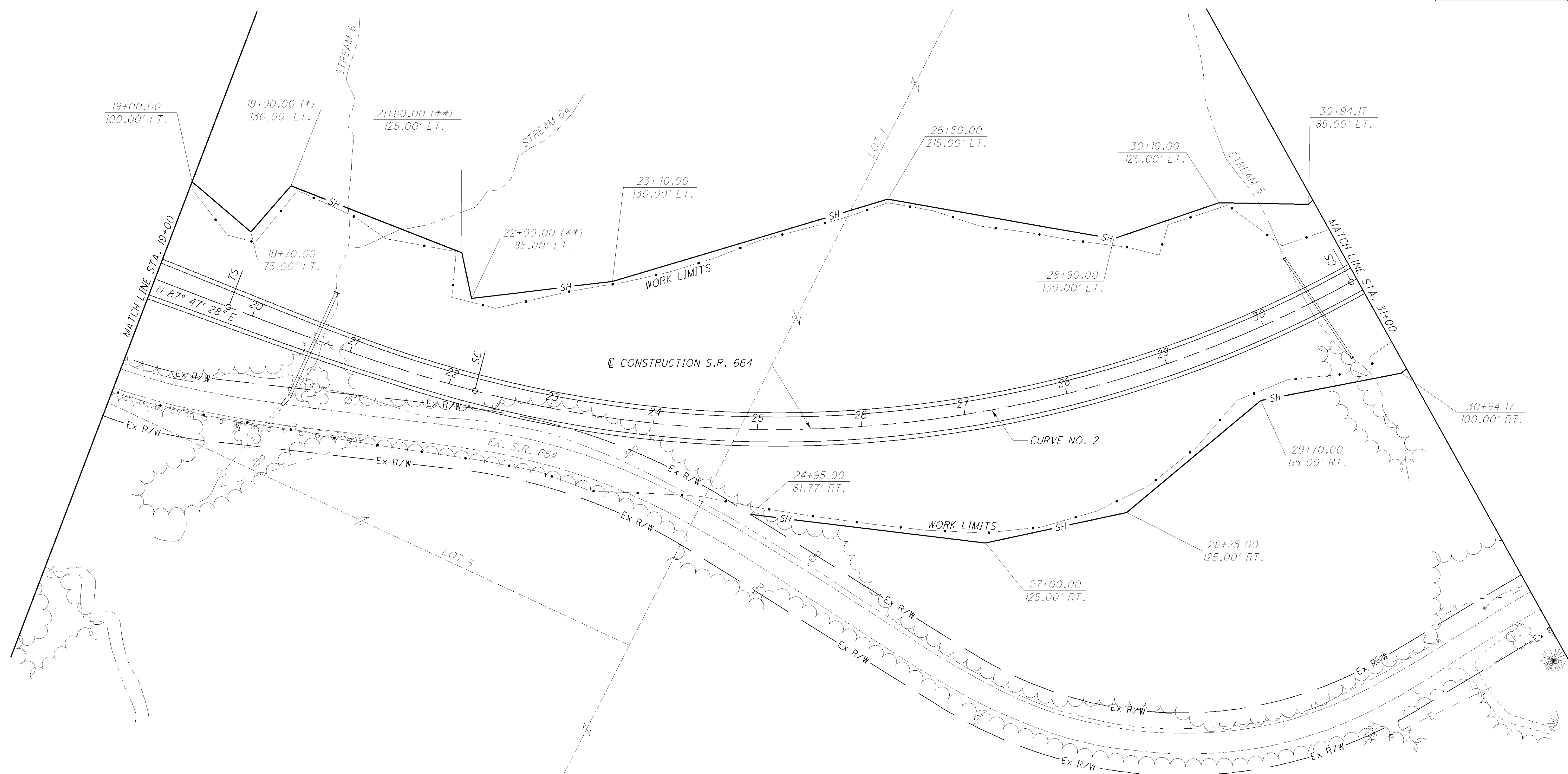
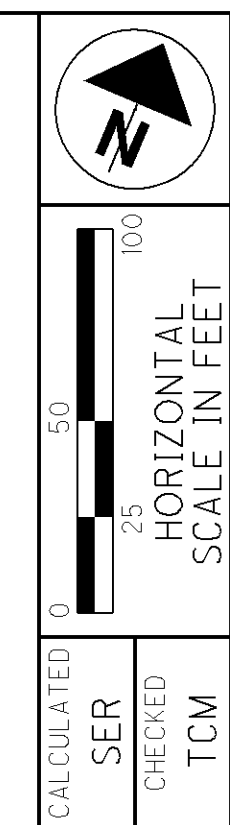
**LODGE ENTRANCE
CURVE NO. 2**
 P.I. = Sta. 14+05.54
 $\Delta = 64^\circ 07' 27''$ (RT)
 $Dc = 22^\circ 55' 06''$
 $R = 250.00'$
 $T = 156.59'$
 $L = 279.79'$
 $E = 44.99'$
 $e_{max} = NONE$
 PC Sta. 12+48.94
 PT Sta. 15+28.74

**S.R. 664
CURVE NO. 1**
 P.I. = Sta. 14+04.45 $Ls = 125.00'$
 $\Delta = 9^\circ 37' 19''$ (RT) $\theta s = 0^\circ 56' 15''$
 $Dc = 1^\circ 30' 00''$ $LT = 83.33'$
 $R = 3,819.72'$ $ST = 41.67'$
 $e_{max} = 3.50\%$ $Lc = 516.46'$
 TS Sta. 10+20.45 $Ts = 384.00'$
 SC Sta. 11+45.45 $Es = 13.68'$
 CS Sta. 16+61.91
 ST Sta. 17+86.91

(*) STA. MEASURED FROM LONG SPIRAL TANGENT
 (**) STA. MEASURED FROM SHORT SPIRAL TANGENT

U:\173608707\85123\row\sheet\85123RD001.dgn

— SH — =
LIMIT OF CONTRACTOR
RESPONSIBILITY



S.R. 664
CURVE NO. 2

P.I. = Sta. 27+10.10	Ls = 250.00'
$\Delta = 55^\circ 55' 57''$ (LT)	$\theta_s = 6^\circ 15' 00''$
Dc = 5° 00' 00"	LT = 166.77'
R = 1,145.92'	ST = 83.43'
$e_{max} = 7.80\%$	Lc = 868.65'
TS Sta. 19+75.52	Ts = 734.58'
SC Sta. 22+25.52	Es = 154.08'
	CS Sta. 30+94.17
	ST Sta. 33+44.17

(*) STA. MEASURED FROM LONG SPIRAL TANGENT
(**) STA. MEASURED FROM SHORT SPIRAL TANGENT

U:\173608707\85123\row\sheets\85123RD002.dgn

LIMITS PLAN - S.R. 664
STA. 19+00.00 TO 31+00.00

HOC-664-4.08

S.R. 664
CURVE NO. 2

P.I. = Sta. 27+10.10 Ls = 250.00'
 $\Delta = 55^\circ 55' 57''$ (LT) $\theta_s = 6^\circ 15' 00''$
 Dc = 5° 00' 00" LT = 166.77'
 R = 1,145.92' ST = 83.43'
 $e_{max} = 7.80\%$ Lc = 868.65'
 TS Sta. 19+75.52 Ts = 734.58'
 SC Sta. 22+25.52 Es = 154.08'
 CS Sta. 30+94.17
 ST Sta. 33+44.17

(*) STA. MEASURED FROM LONG SPIRAL TANGENT
 (**) STA. MEASURED FROM SHORT SPIRAL TANGENT

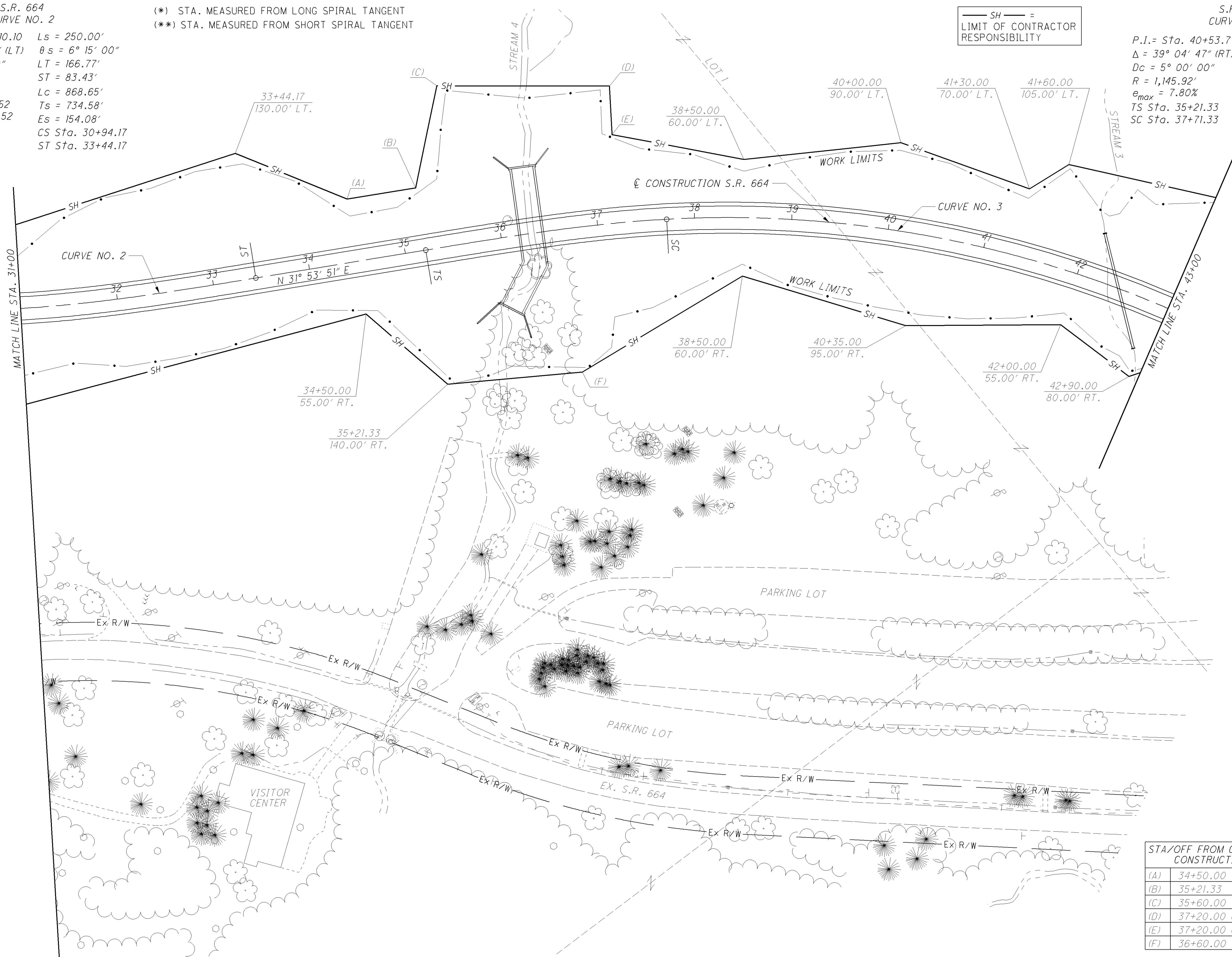
S.R. 664
CURVE NO. 3

P.I. = Sta. 40+53.77 Ls = 250.00'
 $\Delta = 39^\circ 04' 47''$ (RT) $\theta_s = 6^\circ 15' 00''$
 Dc = 5° 00' 00" LT = 166.77'
 R = 1,145.92' ST = 83.43'
 $e_{max} = 7.80\%$ Lc = 531.60'
 TS Sta. 35+21.33 Ts = 532.45'
 SC Sta. 37+71.33 Es = 72.44'
 CS Sta. 43+02.92
 ST Sta. 45+52.92

— SH — =
LIMIT OF CONTRACTOR
RESPONSIBILITY

CALCULATED
SER
CHECKED
TCM

0 25 50 100
HORIZONTAL
SCALE IN FEET



STA/OFF FROM CENTERLINE CONSTRUCTION S.R. 664		
(A)	34+50.00	65.00' LT
(B)	35+21.33	65.00' LT
(C)	35+60.00 (*)	165.00' LT
(D)	37+20.00 (**)	140.00' LT
(E)	37+20.00 (**)	90.00' LT
(F)	36+60.00 (*)	150.00' RT

U:\173608707\85123\row\sheet\85123RD003.dgn

LIMITS PLAN - S.R. 664
STA. 31+00.00 TO STA. 43+00.00

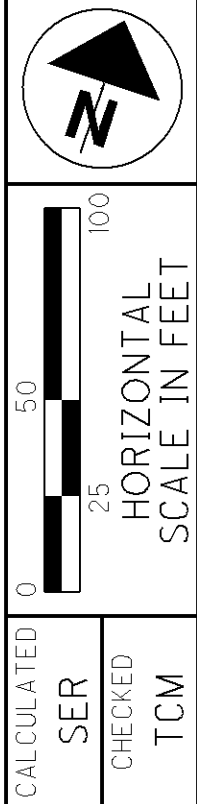
HOC-664-4.08

S.R. 664
CURVE NO. 3

P.I. = Sta. 40+53.77 $L_s = 250.00'$
 $\Delta = 39^\circ 04' 47''$ (RT) $\theta_s = 6^\circ 15' 00''$
 $D_c = 5^\circ 00' 00''$ $LT = 166.77'$
 $R = 1,145.92'$ $ST = 83.43'$
 $e_{max} = 7.80\%$ $L_c = 531.60'$
 TS Sta. 35+21.33 $T_s = 532.45'$
 SC Sta. 37+71.33 $E_s = 72.44'$
 CS Sta. 43+02.92
 ST Sta. 45+52.92

— SH — =
LIMIT OF CONTRACTOR
RESPONSIBILITY

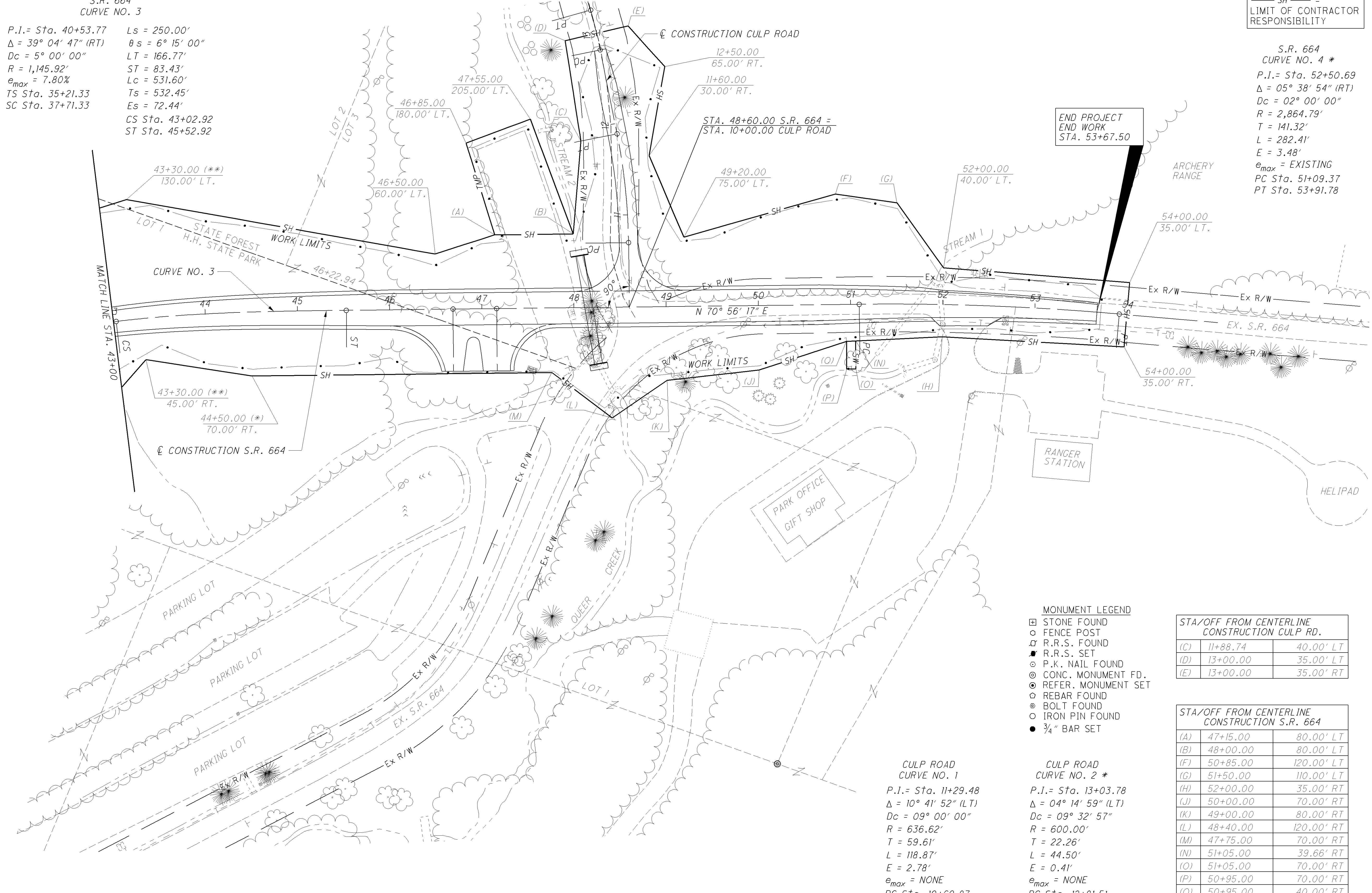
S.R. 664
CURVE NO. 4 *
 P.I. = Sta. 52+50.69
 $\Delta = 05^\circ 38' 54''$ (RT)
 $D_c = 02^\circ 00' 00''$
 $R = 2,864.79'$
 $T = 141.32'$
 $L = 282.41'$
 $E = 3.48'$
 $e_{max} = \text{EXISTING}$
 PC Sta. 51+09.37
 PT Sta. 53+91.78



LIMITS PLAN - S.R. 664
STA. 43+00.00 TO STA. 51+16.98

HOC-664-4.08

134
134



- MONUMENT LEGEND**
- ☐ STONE FOUND
 - FENCE POST
 - ⊕ R.R.S. FOUND
 - ⊙ R.R.S. SET
 - ⊗ P.K. NAIL FOUND
 - ⊙ CONC. MONUMENT FD.
 - ⊙ REFER. MONUMENT SET
 - REBAR FOUND
 - ⊙ BOLT FOUND
 - IRON PIN FOUND
 - 3/4" BAR SET

STA/OFF FROM CENTERLINE CONSTRUCTION CULP RD.	
(C)	11+88.74 40.00' LT
(D)	13+00.00 35.00' LT
(E)	13+00.00 35.00' RT

STA/OFF FROM CENTERLINE CONSTRUCTION S.R. 664	
(A)	47+15.00 80.00' LT
(B)	48+00.00 80.00' LT
(F)	50+85.00 120.00' LT
(G)	51+50.00 110.00' LT
(H)	52+00.00 35.00' RT
(J)	50+00.00 70.00' RT
(K)	49+00.00 80.00' RT
(L)	48+40.00 120.00' RT
(M)	47+75.00 70.00' RT
(N)	51+05.00 39.66' RT
(O)	51+05.00 70.00' RT
(P)	50+95.00 70.00' RT
(Q)	50+95.00 40.00' RT

**CULP ROAD
CURVE NO. 1**
 P.I. = Sta. 11+29.48
 $\Delta = 10^\circ 41' 52''$ (LT)
 $D_c = 09^\circ 00' 00''$
 $R = 636.62'$
 $T = 59.61'$
 $L = 118.87'$
 $E = 2.78'$
 $e_{max} = \text{NONE}$
 PC Sta. 10+69.87
 PT Sta. 11+88.74

**CULP ROAD
CURVE NO. 2 ***
 P.I. = Sta. 13+03.78
 $\Delta = 04^\circ 14' 59''$ (LT)
 $D_c = 09^\circ 32' 57''$
 $R = 600.00'$
 $T = 22.26'$
 $L = 44.50'$
 $E = 0.41'$
 $e_{max} = \text{NONE}$
 PC Sta. 12+81.51
 PT Sta. 13+26.02

(*) STA. MEASURED FROM LONG SPIRAL TANGENT
 (**) STA. MEASURED FROM SHORT SPIRAL TANGENT

U:\173608707\85123\row\sheet\85123RD004.dgn