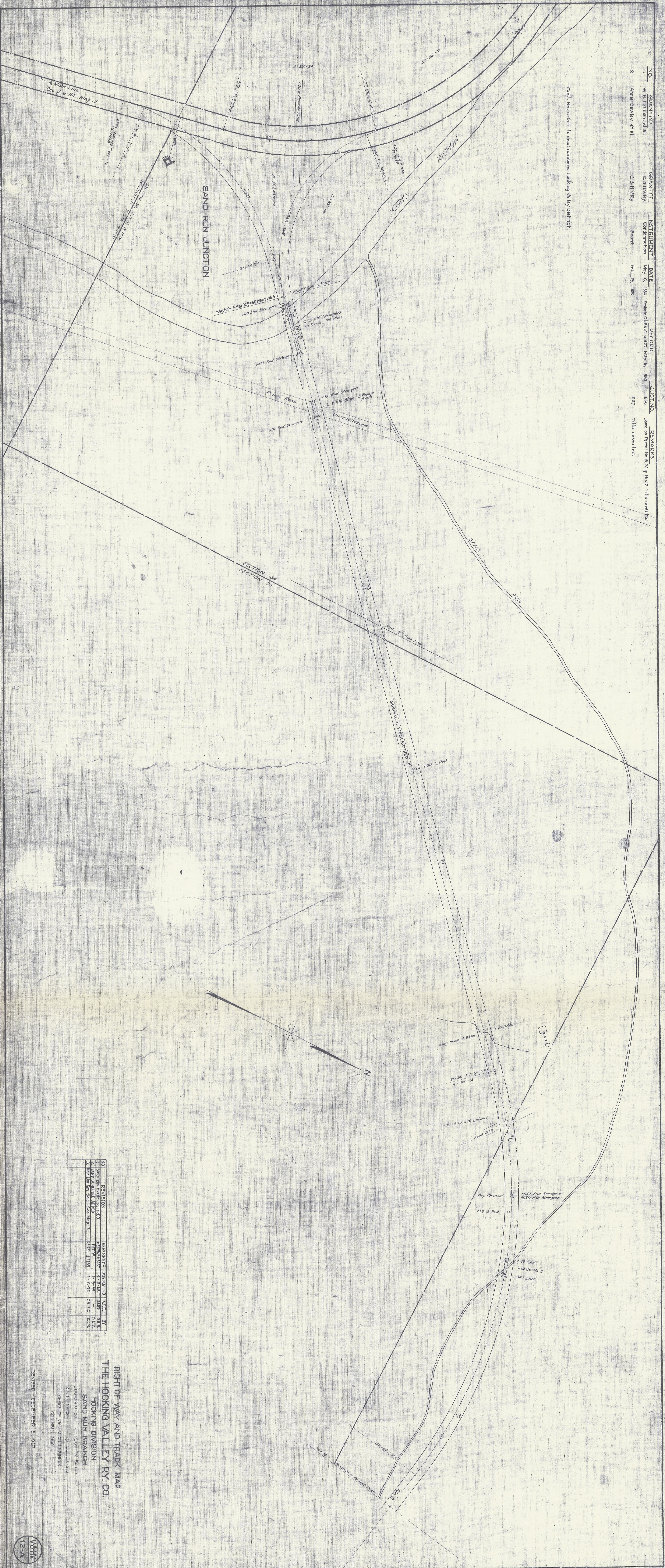


NO. GRANTEE INSTAUMENT DATE RECORD CUST. NO. DEMARKS  
 2 W.H. Lehman et al C.S. V. By Grant Feb. 19, 1880 Match Ct. Bk. of P. 427 May 6, 1889 1667 Same as Parcel No. 5 Map No. 12 Title reverted  
 Anne Dawley et al C.S. V. By Grant Feb. 19, 1880 1667 Title reverted

Cust. No. refers to deed numbers, Hocking Valley District.



NO.	REVISION	REFERENCE	DATE	BY
1	SAND RUN BRANCHING DETACHED	CLERK'S OFFICE	4-11-86	B.E.A.
2	LAND ACQUIRED ADDED	RECORDS	1-3-89	D.L.A.
3	TRAIL ORN. ON SAND. SEE MAP 12.	RECORDS	11-8-92	B.E.A.

RIGHT OF WAY AND TRACK MAP  
 THE HOCKING VALLEY RY. CO.  
 HOCKING DIVISION  
 SAND RUN BRANCH  
 STATION 0+00 TO STATION 54+00  
 SCALE 1"=400' OCT. 20, 1916  
 OFFICE OF VICTORIAN ENGINEERS  
 COLUMBUS, OHIO  
 REVISION - DECEMBER 31, 1927

