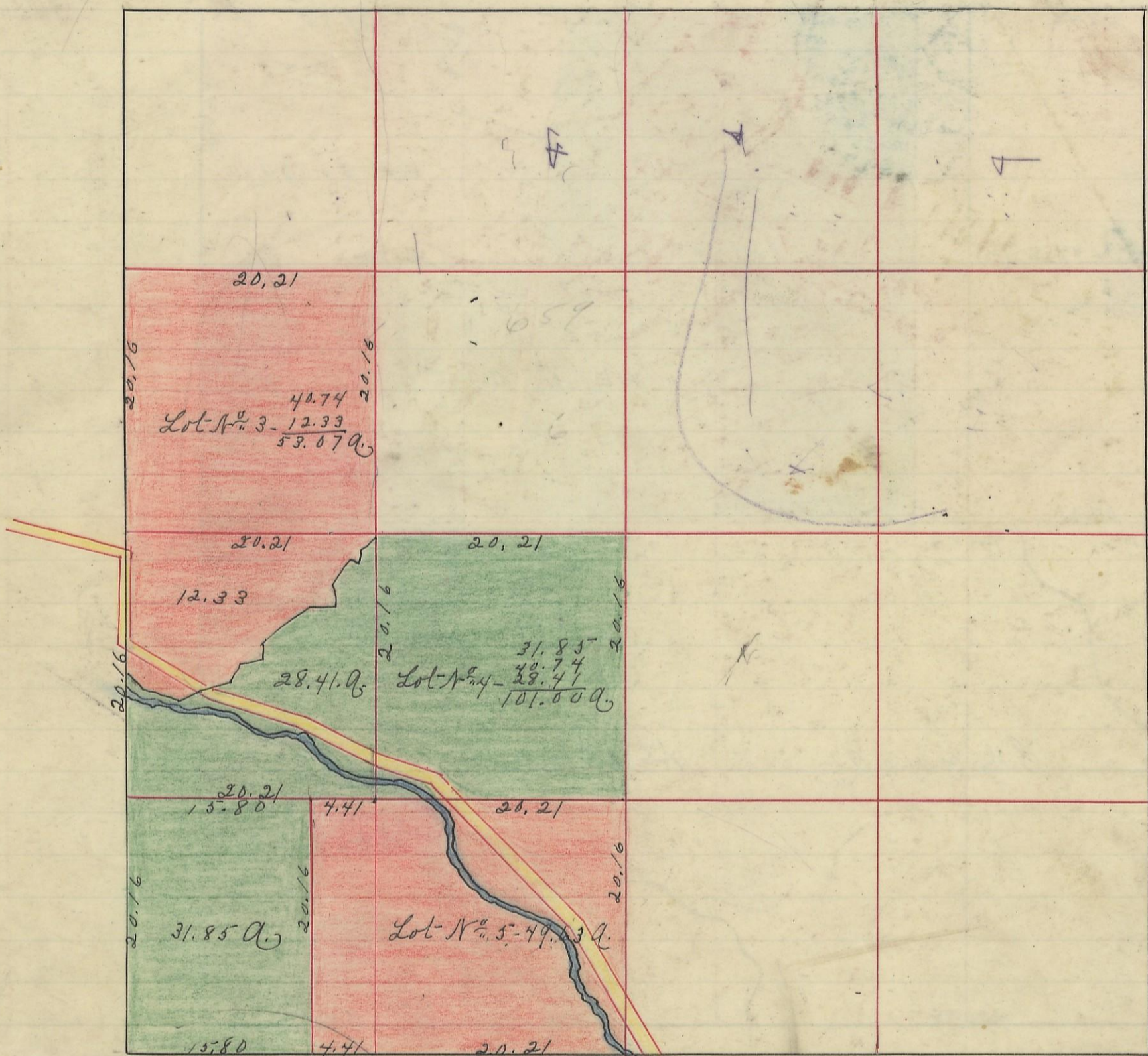


BENTON, No. <sup>11</sup>/<sub>12</sub>, Range 18, Section No. 22.



I hereby certify the above to be a correct Plat of Fractional Lots in section No. 22  
 Township No. 11, Range No. 18, Locking County Ohio.  
 Surveyed 1866

By Levi Davis Sur. S.C.C.

I hereby certify the above to be a true copy.

P. D. Sloan  
 Recorder.

The above Plat transferred from Plat Book "A" page 18. Record of Fractional  
 Lots S.C.C. April 15<sup>th</sup> 1901.

P. D. Sloan. Recorder.