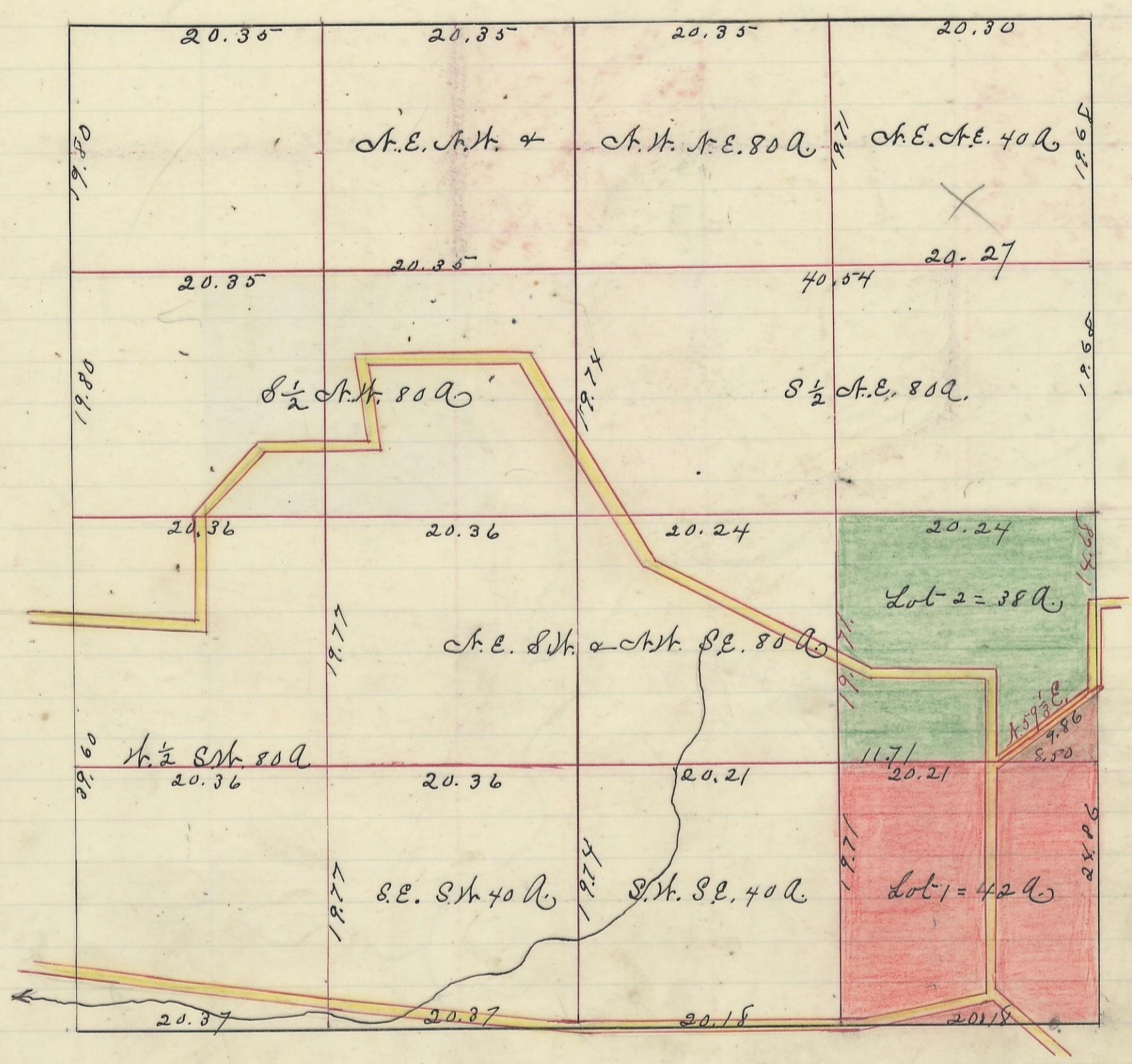


BENTON, No.  $\frac{11}{12}$ , Range 18, Section No. 28

Variation  
1° 45' W



I hereby certify the above to be a correct Plat of Fractional Lots in Section No 29. Township No. 11. Range No 18.ocking County Ohio.  
 Surveyed 1870. By Levi Davis Surveyor S.C.L.B.  
 Rec'd and Recorded Jan 2<sup>nd</sup> 1884. Jacob Weaver. Recorder.

I hereby certify the above to be a true copy. P.D. Sloan, Recorder.

The above Plat transferred from Plat Book "A" page 354. Record of fractional lots S.C.L.B. April 17<sup>th</sup> 1901.  
 P.D. Sloan Recorder.