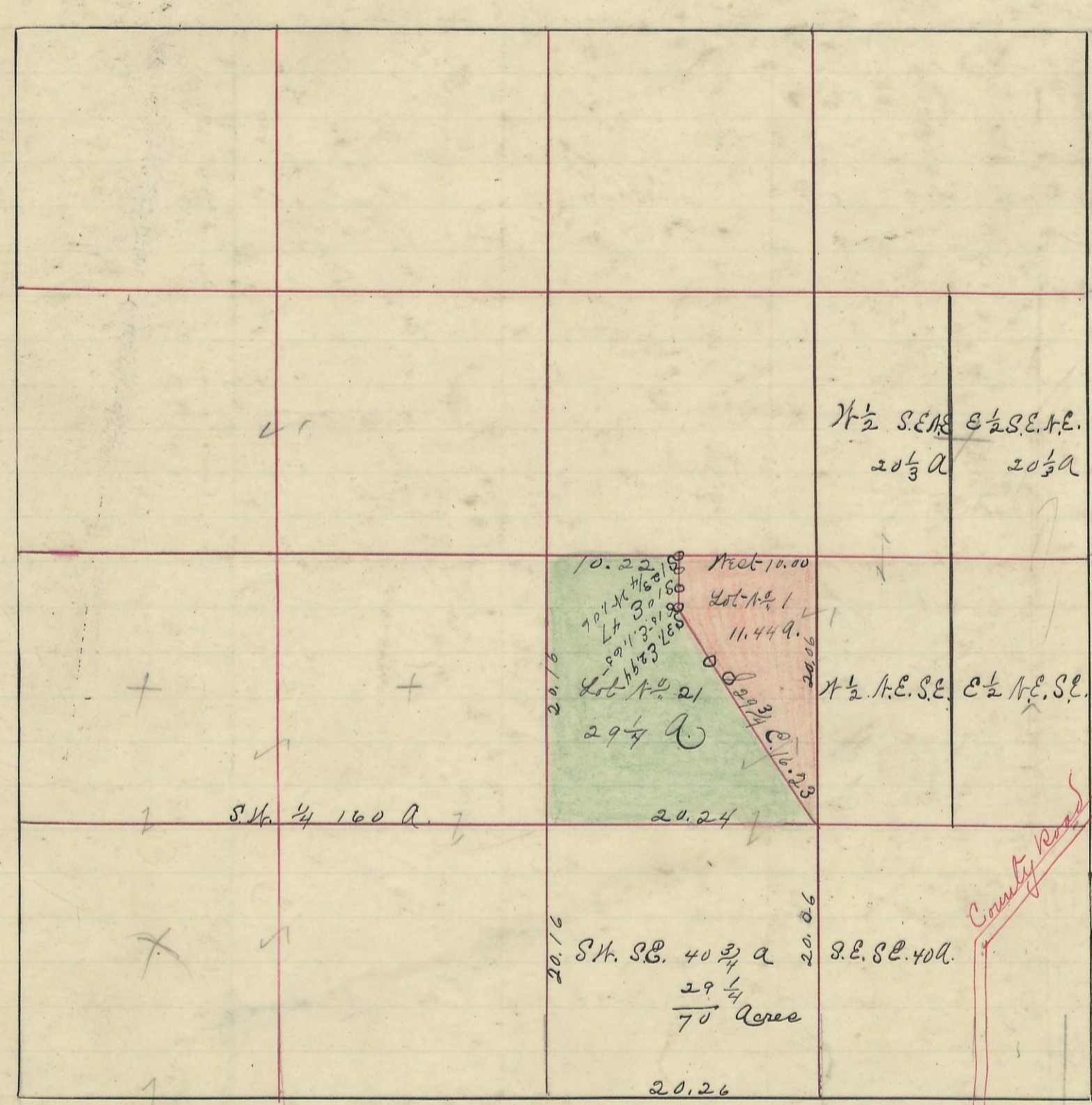


FALLS, No. 14, Range 17, Section No. 23



Variation
1° 45' N



Scale 10 chs to an inch

I hereby certify the above to be a correct Plat of Section 23 Township 14^N. Range 17^R. Shocking County Ohio. Surveyed 1862.
By Levi Davis Sur. O. C. U.

Rec'd. August 12th 1878
Recorded August 12th 1878.

Benj. White Rec^{dy}

I hereby certify the above to be a true copy. P. D. Sloan Rec^{dy}

The above Plat Transferred from Plat-Book "A" Page 129. Record of fractional Lots O. C. U. May 2nd 1901.
P. D. Sloan Recorder.