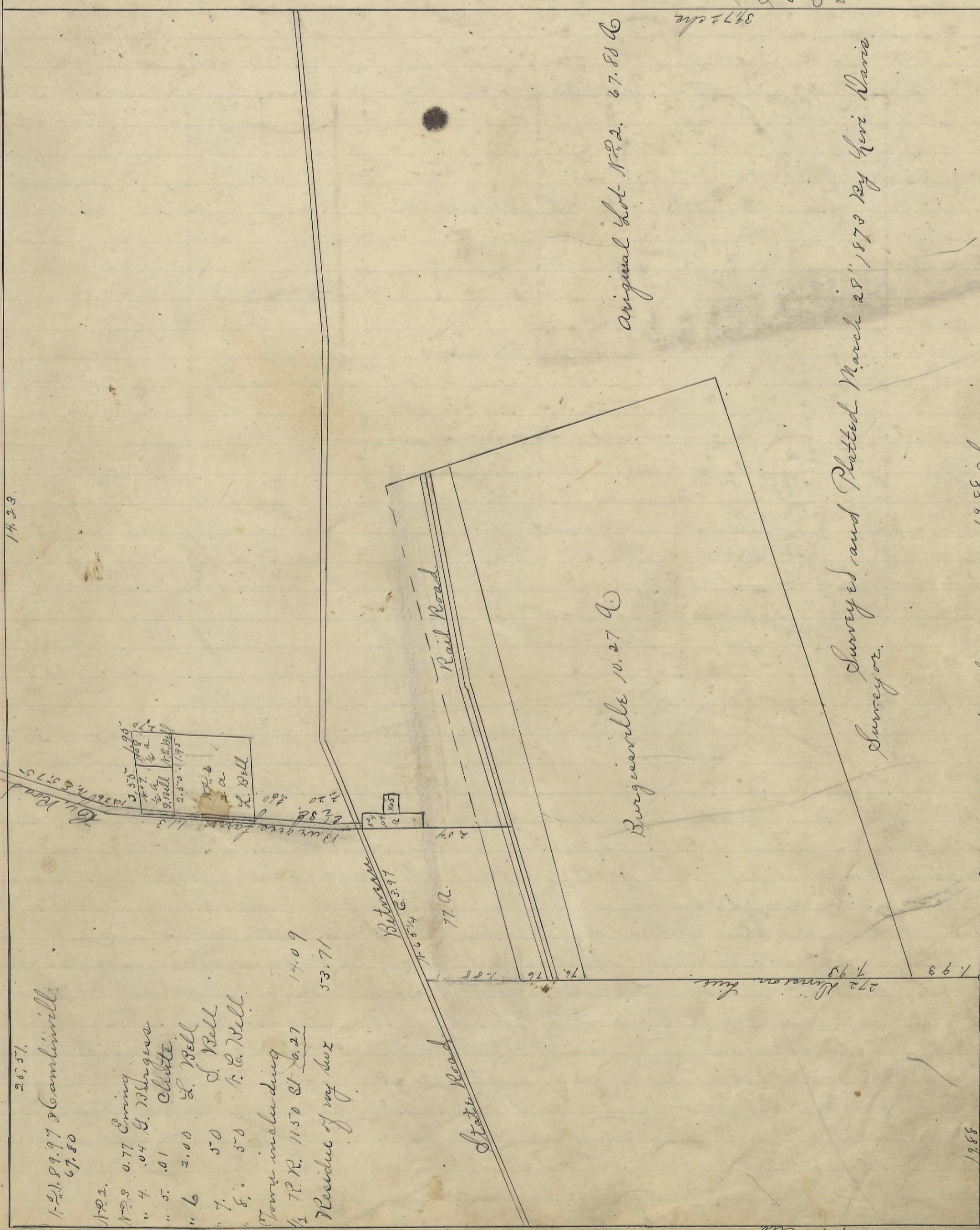


Variation  
13 1/4 N.

Scale South of  
State Road 2 ch  
to an inch.  
South of Road 2 ch  
to an inch.



1423

26,571

1-2, 89.97 to Camlinwill

67.80

1792

1793 0.77 Erving

" 4 .04 G. Burgess

" 5 .01 Chittie

" 6 2.00 L. Bell

" 7 .50 L. Bell

" 8 .50 L. E. Bell

Town including

1/2 T.P.R. 1150 St 26.27 14.09

Residue of way 53.71

Burgessville

N 76° 57' 4" E 33.97'

77 A.

State Road

Rail Road

Burgessville N. 27 W.

Original Lot No. 2. 67.80 A

3972 ch

272 Burgessville

Surveyed and Platted March 25, 1873 by Levi Davis  
Surveyor.

1885

I hereby certify the above to be a true copy. P. H. Sloan, Recorder. S. C. D.

The above Plat transferred from Plat Book "A" page 187-188- Record of fractional Lots S. C. D. May 6, 1901.  
P. H. Sloan, Recorder.