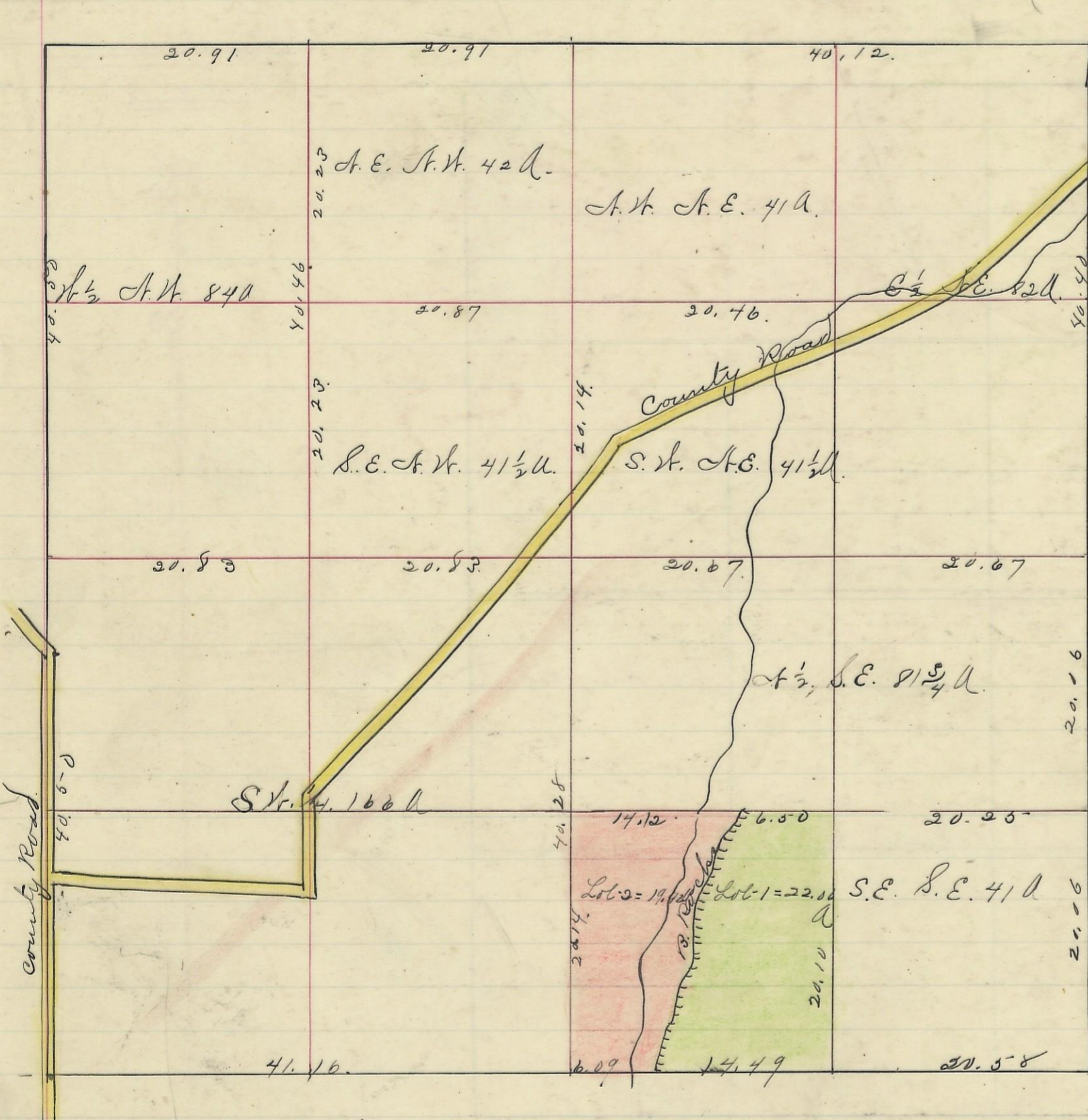
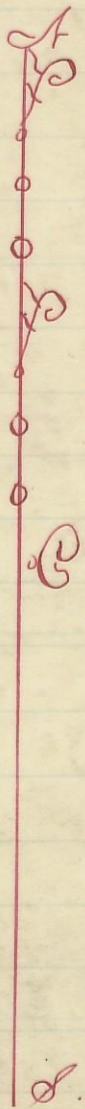


LAUREL, No. 12, Range 18, Section No. 11.



Variation  
3" N



Scale is close to one inch

I hereby certify the above to be a correct Plat of Fractional Lots in Section No. 11, Township No. 12 Range No. 18, Schock County Ohio Surveyed 1851.

By James H. Davis Surveyor. S. C. W.

James H. Davis Surveyor.

Received and Recorded Jan. 10<sup>th</sup>, 1854.

Jacob Weaver. Recorder S. C. W.

I hereby certify the above to be a true copy. P. D. Sloan Recorder.

The Above Plat transferred from Plat Book "A" page 268 Record of Fractional Lots. S. C. W. May 25<sup>th</sup> 1901.

P. D. Sloan

Recorder. S. C. W.