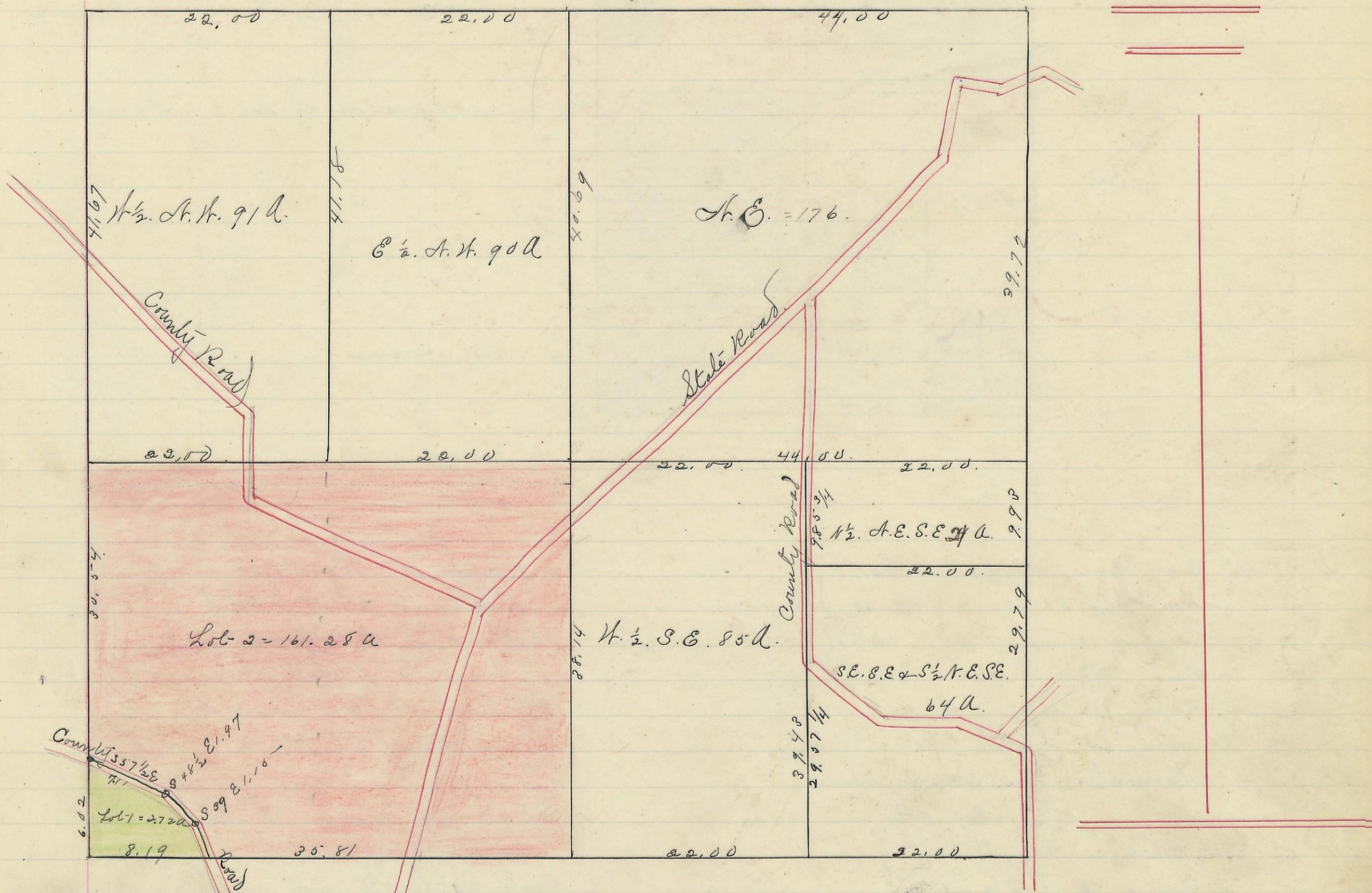


LAUREL, No. 12, Range 18, Section No. 15



I hereby Certify the above to be a correct Plat of Fractional Lots in
 Section No. 15. Township No. 12 Range No. 18. Jackson County Ohio
 Surveyed 1870. By Levi Davis Sur. S. C. C.

Received and Recorded. Jan 12th 1884.
 Jacob Weaver. Recorder.

I here by Certify the above to be a true copy
 P. D. Sloan

The Above Plat transferred from Plat Book "A" page 270. Record of
 fractional Lots. S. C. C. May 25th 1901.

P. D. Sloan
 Recorder. S. C. C.