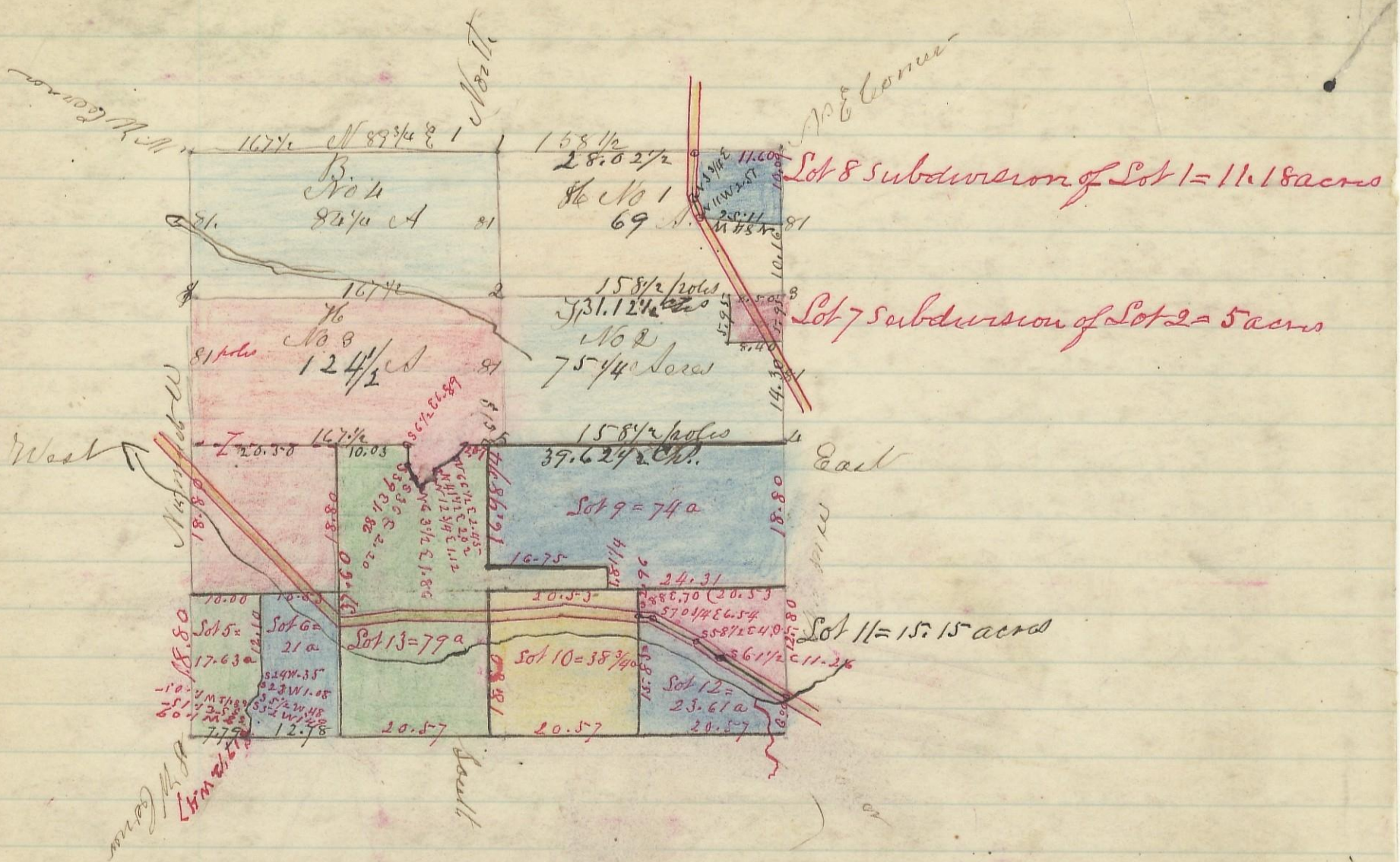


Plat of Section 16, Town 12, Range 18



- 1 Sugar tree N 89 3/4 E 270
- Do S 53 E 135
- 2 Poplar 112 S 77 E 270
- Do 22 S 13 1/2 W 32.3
- 3 Maple 15 S 67 W 20
- Do 27 E 40
- 4 Established quarter Section
- Bearings at other corners office
- 5 Wood 20 N 75 W 55
- Do 12 S 56 1/2 E 36

- 6 Maple 10, N 64 W 59
- Birch 18 N 45 E 39
- 7 Wood 16, N 10 W 20
- do 13 N 18 W 23
- 8 a hot oak or Diameter
- in Stead of Stake

August 21st 1879 S. S. Sully

scale 20 ch. to an inch

Record and Recorded July 7th 1871
J. Stewart

Recorder W. C. O.

The Lots No 1-2-3+4 Embrace the original Seases surrendered, which contain more than half the section. But was Deeded by the State as half quarters of the section which was held by the District Court to be erroneous, and the owners hold yet agreeably to the original Seases, and not by the Deeds, so far as description and quantity is concerned, which holding reduces the south division of the section to a less number of acres, than if held by the Deeds from the State. This Record and the south division of the section embracing a part of Lot 3=39 acres Lots 5-6-9-10-11-12+13+7+8 in the north division made Aug 12th 1884
By Levi Davis surveyor