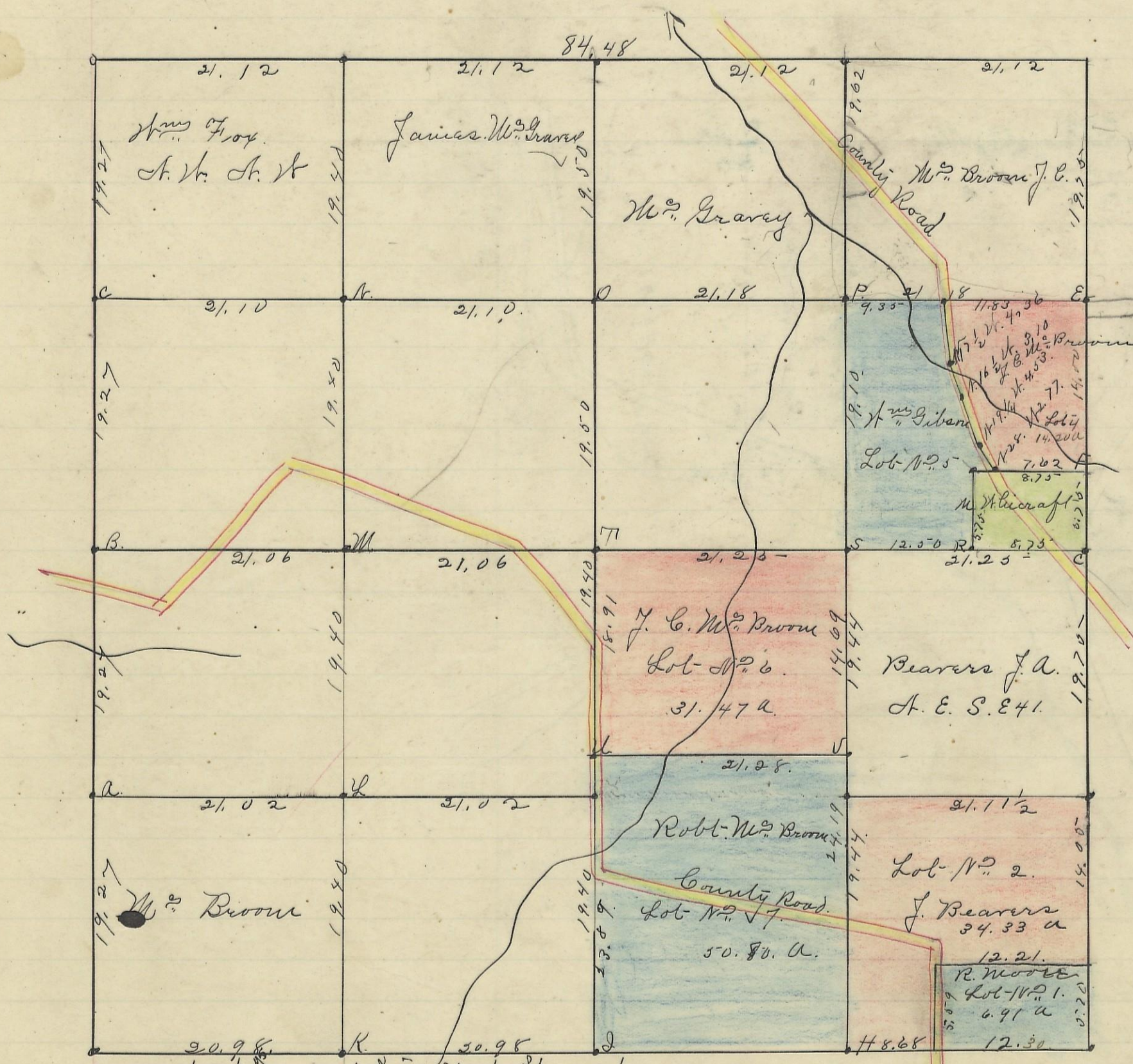


LAUREL, No. 12, Range 18, Section No. 17



Variation
1° 45' N

Scale 10 chs to an inch

Course	Bearing	Distance	Remarks
A	N oak	16	N 74 E 38
B	N oak	22	N 74 E 38
C	N oak	14	S 48 1/2 W 25
D	o. oak	10	S 23 E 17
E	Sum	6	N 7 W 21
F	Sum	18	N 82 E 28
G	Maple	7	West 17
H	Sum	6	S 11 1/2 W 15
I	chestnut	10	N 86 1/4 W 13
J	Beech	7	N 77 W 7
K	Spruce	20	S 87 E 16
L	N oak	10	N 28 W 28
M	N oak	13	N 87 E 26
N	chestnut	3	S 23 1/2 E 98 1/2
O	Beech	2	N 62 1/2 E 21
P	blackberry	4	N 17 W 182
Q	N oak	4	West 12 1/2
R	N oak	6	East 21 1/2
S	cotton wood	9	S 55 W 30 1/4
T	Nickory	5	N 35 E 5 1/2
U	o. oak	7	S 35 W 10
V	N walnut	14	S 20 W 23
W	Birch	7	West 14
X	Beech	17	S 52 E 9
Y	N oak	18	N 70 E 39 1/2
Z	N oak	12	S 2 W 52
1	N walnut	4	N 80 W 113
2	N oak	14	East 10 1/2
3	N walnut	12	S 47 W 12 1/2
4	Beech	12	N 70 E 20
5	N oak	18	N 44 W 12
6	N oak	10	S 21 E 31
7	N oak	10	S 19 E 31

17	chest.	7	N 72 W	20
18	o. oak	6	N 45 E	34 1/2
19	N oak	20	S 7 1/2 W	217
20	Beech	10	N 53 1/4 E	5 1/2
21	chest.	30	S 54 1/2 W	30

I hereby Certify the above to be a correct Plat of Fractional Lots in section No. 17, Township No. 12 Range No. 18, Jackson County Ohio. Surveyed 1869.

By Levi Davis Surveyor S. C. C.
Rec'd and Recorded January 21st 1884.

Jacob Weaver. Recorder.
I here by certify the above to be a true copy.
P. D. Sloan Recorder

The above Plat transferred from Plat Book "A" page 371. Record of fractional Lots S. C. C. May 25th 1901.
P. D. Sloan Recorder S. C. C.