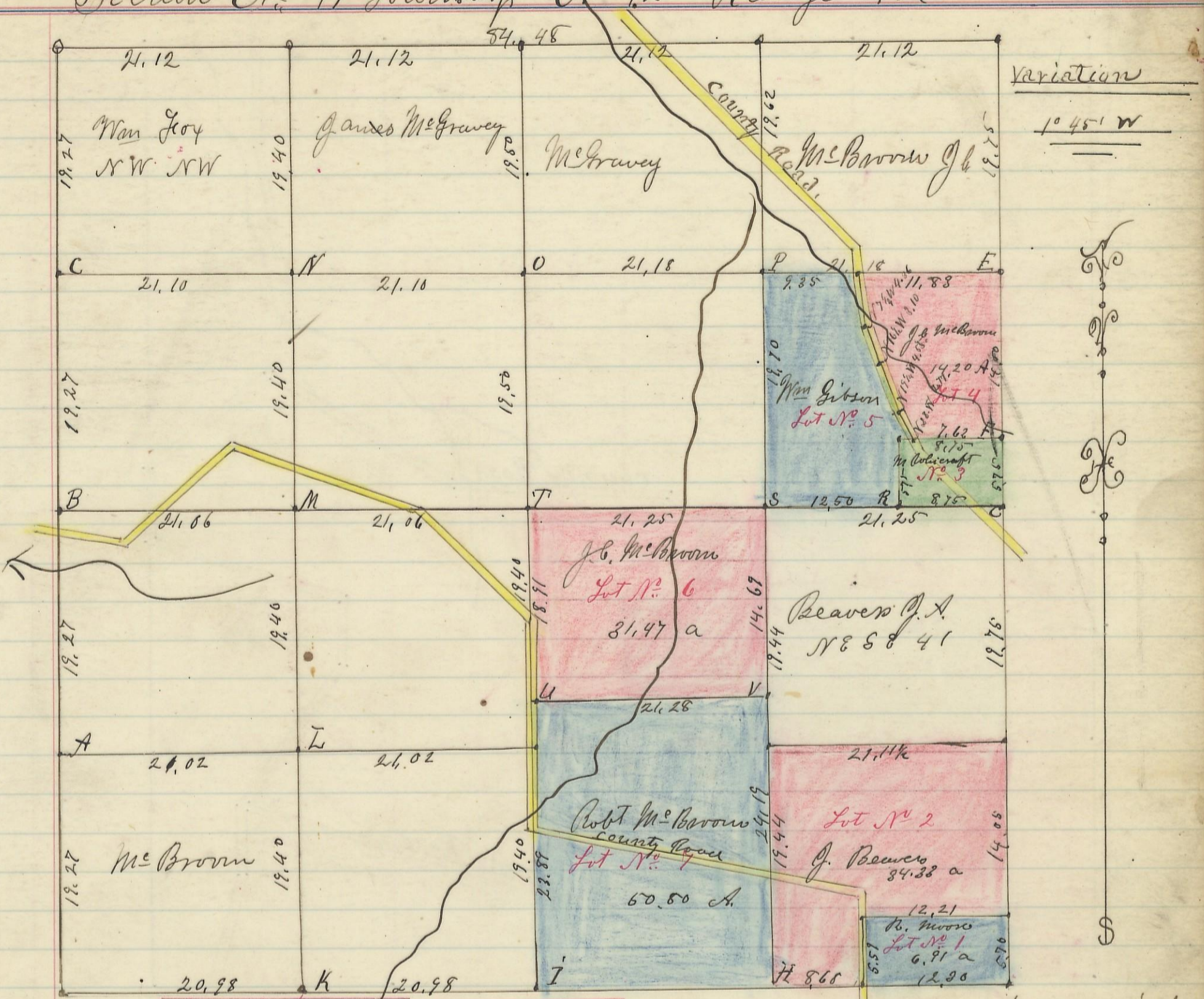


Section No 17 Township No 12 Range 18.



Variation  
10 45' W

Scale 10 chs To an inch



Corner	Beings	Diameter	Course	Distances	Remarks
A	W oak	16	North	2	
	Do	16	N 74 E	38	
B	W oak	22	North	10 1/4	
	Do	14	S 48 1/2 W	25	
C	W oak	10	S 23 E	17	
	Gum	6	N 7 W	21	
D	Gum	18	N 82 E	28	
	Maple	7	West	17	
E	Gum	6	S 1 1/2 W	16	
	Chestnut	10	N 86 1/4 W	16	
F	Beech	7	N 72 W	7	
	Spruce	20	S 51 E	16	
G	B oak	10	N 27 W	28	
	Do	13	N 77 E	26 1/2	
H	Chestnut	3	S 23 1/2 E	95 1/2	
	Beech	2	N 62 1/2 E	21	
I	Hickory	6	N 17 W	18 1/2	
K	B oak	4	West	12 1/2	
	Do	6	East	21 1/4	
L	Whiteoak	9	S 55 W	30 1/4	
M	Hickory	5	N 35 E	5 1/2	
	W oak	7	S 35 W	10	
N	Walnut	14	S 20 W	25	on a Park
	Birch	7	West	14	
O	Beech	17	S 52 E	9	
	W oak	18	N 70 E	39 1/2	
P	W oak	12	S 2 W	52	
	W Walnut	4	N 70 W	11 1/4	
Q	B oak	14	East	10 1/2	
	Walnut	12	S 49 W	12 1/2	
R	Beech	12	N 70 E	20	
	Do	18	N 44 W	12	
S	B oak	10	S 21 E	31	
	Do	10	S 19 E	31	

T	Chestnut	7	N 76 W	20
	W oak	6	N 45 E	34 1/4
U	W oak	30	S 7 1/2 W	217
V	Beech	10	N 55 1/2 E	5 1/2
	Chestnut	80	S 40 1/2 W	80

I hereby certify the above to be a correct Plat of Fractional Lots in Section No 17 Township No 12 Range No 18 Hoocking County Ohio Surveyed 1869.  
By Levi Davis Surveyor H.C.O.

Recd and Recorded Jan'y 21<sup>st</sup> 1884

James Weaver  
Recorder

56