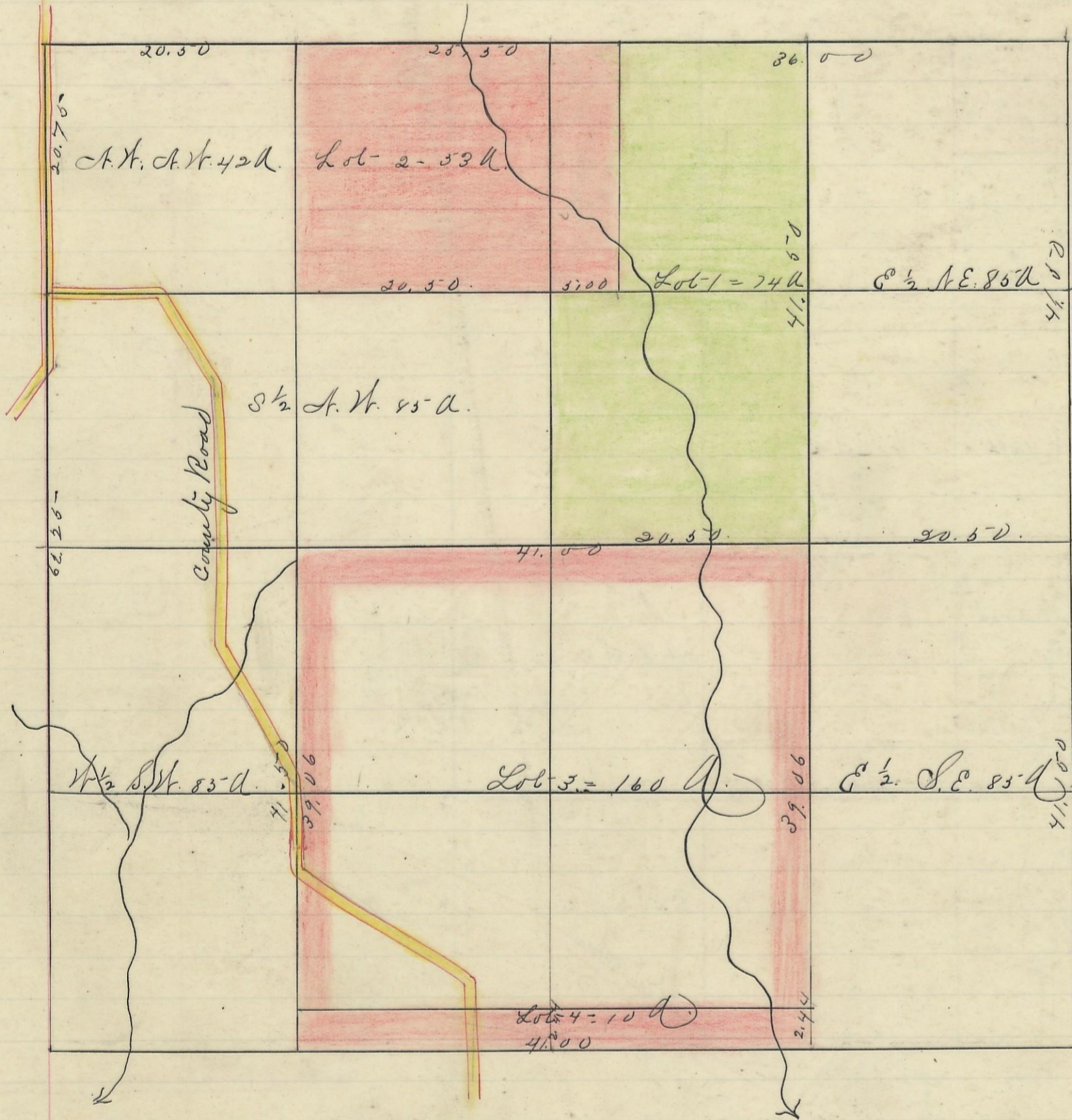


LAUREL, No. 12, Range 18, Section No. 23



Variation
10 30' N.



Scale 10 chs to an inch

I hereby certify the above to be a correct Plat of Fractional Lots in Section No. 23, Township No. 12, Range No. 18,ocking County Ohio Surveyed 1870.

By Levi Davis Surveyor. S. C. W.

Received and Recorded Feb. 5th 1884.

Jacob Weaver. Recorder.

I hereby Certify the above to be a true copy.

P. D. Sloan

Recorder. S. C. W.

The Above Plat transferred from Plat-Book "A" page 375. Record of Fractional Lots. S. C. W. May 27th 1801.

P. D. Sloan

Recorder S. C. W.