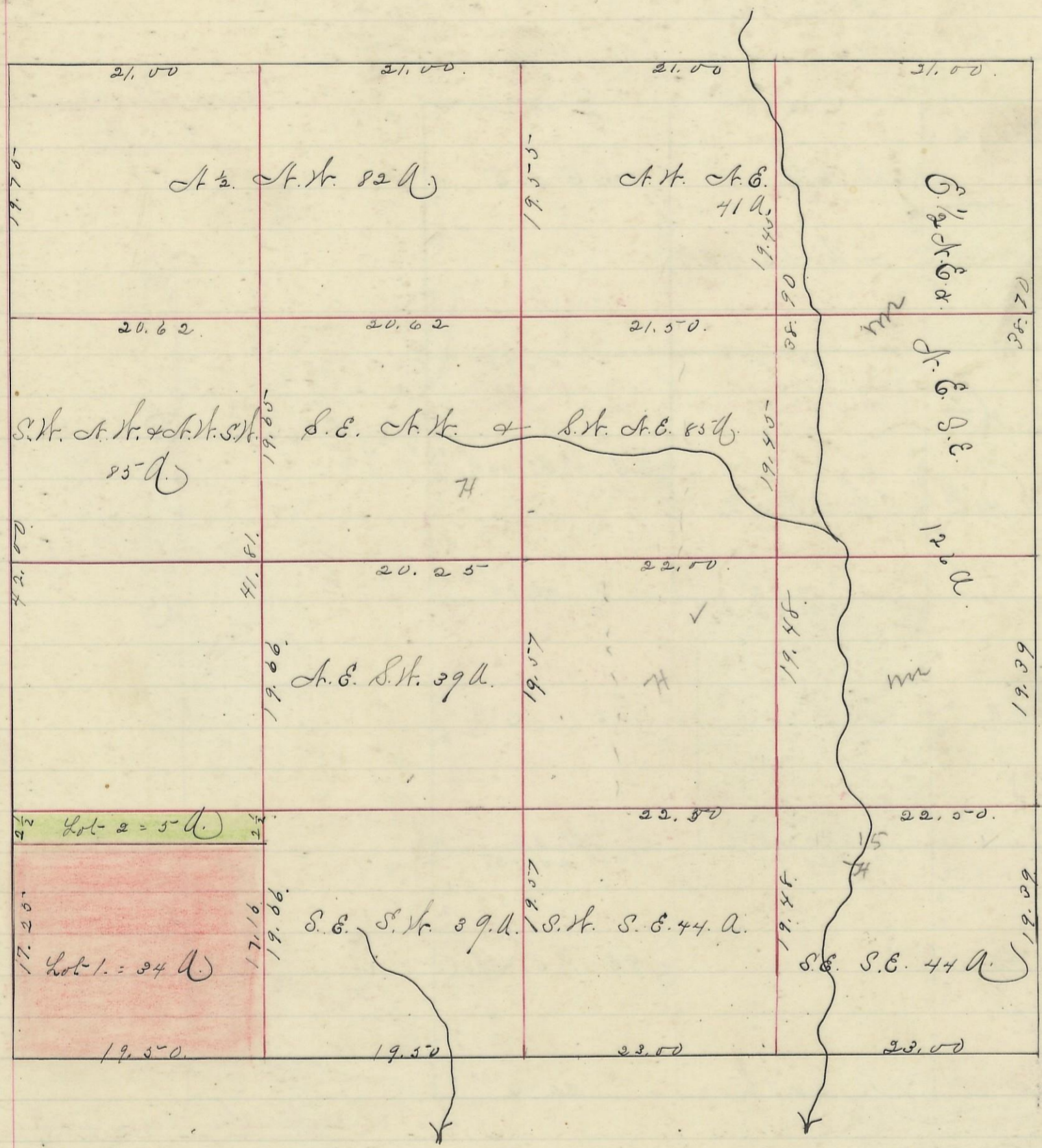
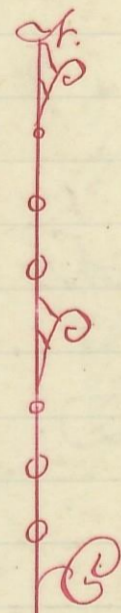


LAUREL, No. 12, Range 18, Section No. 28.



Variation
1° 45' N.



Scale 10 chs to an inch

I hereby certify the above to be a correct Plat of Fractional Lots in Section 28, Township 12, Range 18,ocking County Ohio. Surveyed 1870. By Levi Davis Surveyor. S. C. W.
 Received and Recorded. Feb. 2. 1884.
 Jacob. Weaver. Recorder.

I hereby Certify the above to be a true copy. P. D. Sloan Recorder S. C. W.

The above Plat transferred from Plat Book "A" Page 378. Record of fractional Lots. S. C. W. May 28" 1901.
 P. D. Sloan
 Recorder. S. C. W.