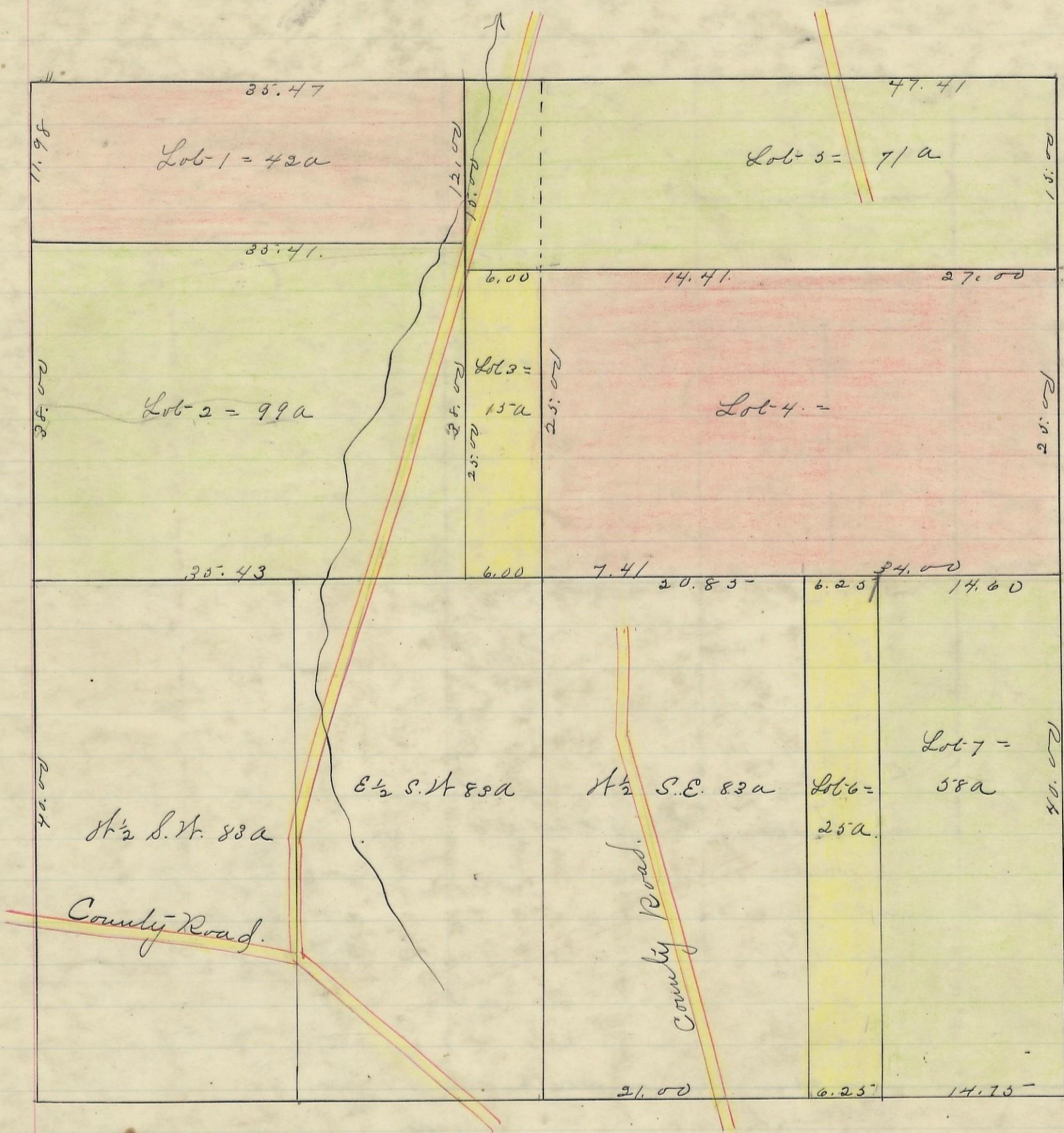
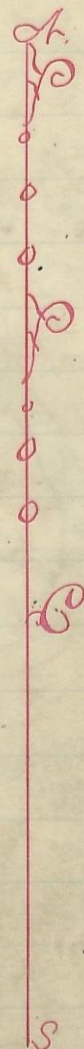


MARION, No. 15, Range 17, Section No. 1.



Variation  
30 ft.



Scale 10 chs to an inch

I hereby Certify the above to be a correct Plat of fractional Lots in Section No. 1, Township No. 15 Range No. 17, Jackson County Ohio, Surveyed 1869 & 1883.

By: Levi Harris Surveyor.

Rec'd and Recorded Dec. 20<sup>th</sup> 1883

Jacob. Kraver

Recorder.

I here by certify the above to be a true copy.

P. D. Sloan Recorder S. C. W.

The Above Plat transferred from Plat Book "A" Page 315. Record of fractional Lots. S. C. W. May 28<sup>th</sup> 1901.

P. D. Sloan

Recorder. S. C. W.