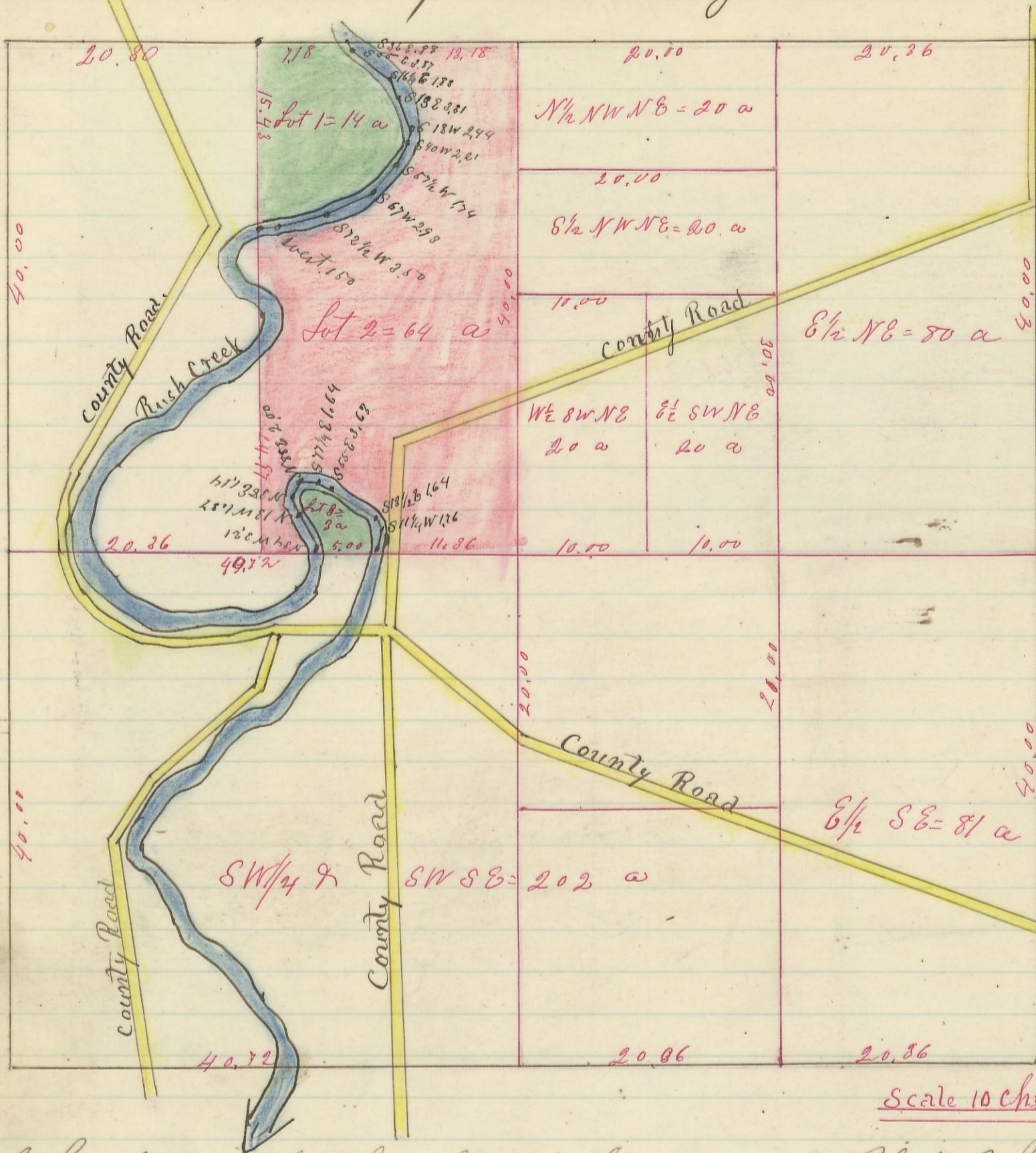


Section No 2 Township No 15 Range No 17.



Variation  
2° W

Scale 10 chs to an inch.

I hereby certify the above to be a correct Plat of fractional Lots in Section No 2 Township No 15 Range No 17. Steubing County Ohio, surveyed by 1870.

By Levi Davis Surveyor,  
Recd and Recorded Dec: 21<sup>st</sup> 1883.

Jacob Weaver  
Recorder,