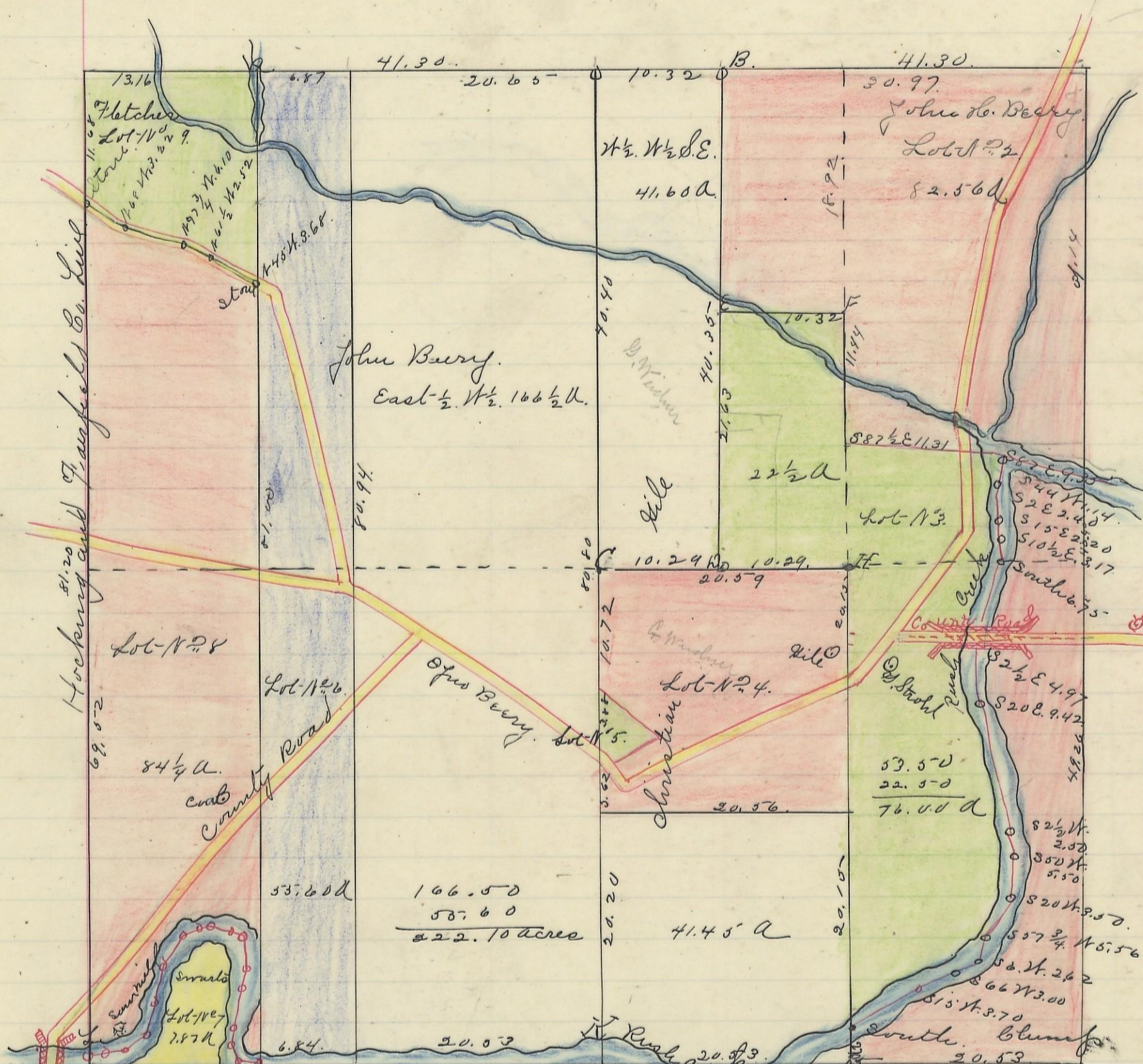


MARION, No. 15, Range 17, Section No. 7



Variation
10301 N

Scale 10 chs to an inch

Blunp Lot No. 1 = 9.00 Acres Lot No. (5) S 31 1/2 E 1.794 N 38 1/2 E 32.04 N 43 3/4 W 5.25 x South 3.88 = 1.00 acres
 Strohl Lot No. 3 = 76.00 Acres Lot No. 7 N 88 E 2776 N 95 E 1004 N 22 E 3874 N 6 E 2234 N 25 E 1364 N 34 E 3284 x N 79 E 1, 404.
 John B. Berry Lot No. 2 = 82.56 " " N 2 (8) 2 E 1174 871 E 2,304 S 40 E 1,404 South 1,994 S 18 1/2 W 2944 S 12 W 2314 S 37 W 2234 x 38 E
 Gile Lot No. 4 = 40.51 " " 197 872 1/2 E 2,064 West-13-19 = 7.87 a.
 Gile Lot No. 5 = 1.00 " a. Stone Poplar 875 N 28 Links - B. Stone Hickory 188 20 24 Links - C. Stone Dogwood 8-11-
 John Berry Lot No. 6 = 53.60 " 39 E 10 1/4 Beech 6 North 43 - N. Stone Hickory 20 S 25 1/2 E 125 1/2 - C. Beech 8.55 E 1/2 Gum 10-
 Smartz Lot No. 7 = 7.87 " N 71 1/4 - F. Stone, Beech 8 N 78 W 9 Beech 43.38 1/2 N 11 3/4 - G. Stone Beech 9 North 53 1/2
 Cool Lot No. 8 = 84.25 " b. Stone B. Walnut 7 North 101 Maple 98.10 1/2 N 76 1/2 - d. Stone, Beech 9 S 79 E 9 1/2 Gum 15 West 21 1/2
 Fletcher Lot No. 9 = 19.18 " K. Stone, Chestnut 4.56 9 E 9 1/2 - L. Stone North of South West Corner of section 125 Links
 Berry S 1/2 N 106.50
 Gile N 1/2 W 1/2 N.E. 41.60
 " S.W.S.E. 41.45
 Total 665.52 acres

I hereby Certify the above to be a correct Plat of Section No. 7 Township No. 15 Range No. 17,ocking County Ohio Surveyed and Plated June 1866.
 By Levi Davis Sur. H. C. O.
 Received and Recorded June 29 1866. H. Ackers. Recorder. H. C. O.

I hereby Certify the above to be a true copy and transferred from Plat-Book "A" page 15 Record of fractional Lots. H. C. O. May 29 1906 P. D. Sloan. Recorder H. C. O.