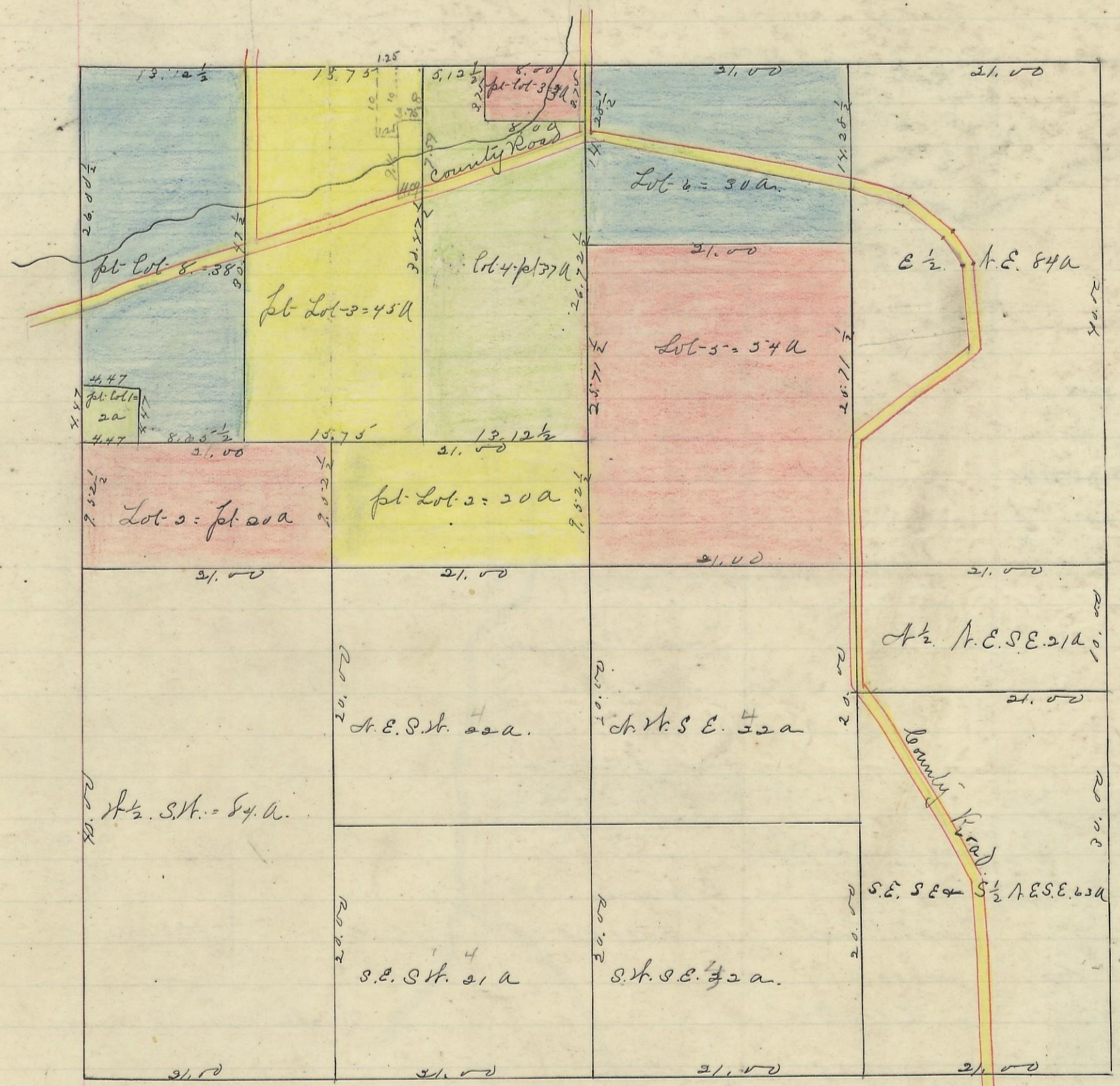


MARION, No. 15, Range 17, Section No. 13

For original Fractional Lot #3 - see Original Plat. Book "A" Page 318.



Variation
1° 45' 11"

St
C
S.

Scale 10 chs to an inch

I hereby Certify the above to be a correct Plat of Fractional Lots in Section No. 13 Township No. 15 Range No. 17 Jackson County Ohio Surveyed 1869. By Levi Davis Surveyor. S. C. W.

Rec'd and Recorded Dec. 21st 1883.

Jacob Weaver Recorder. S. C. W.

I hereby Certify the above to be a true copy. P. D. Sloan Rec^d

The above Plat transferred from Plat Book "A" page 318. Record of frac-Lots. S. C. W. June 4th 1901. P. D. Sloan Recorder. S. C. W.