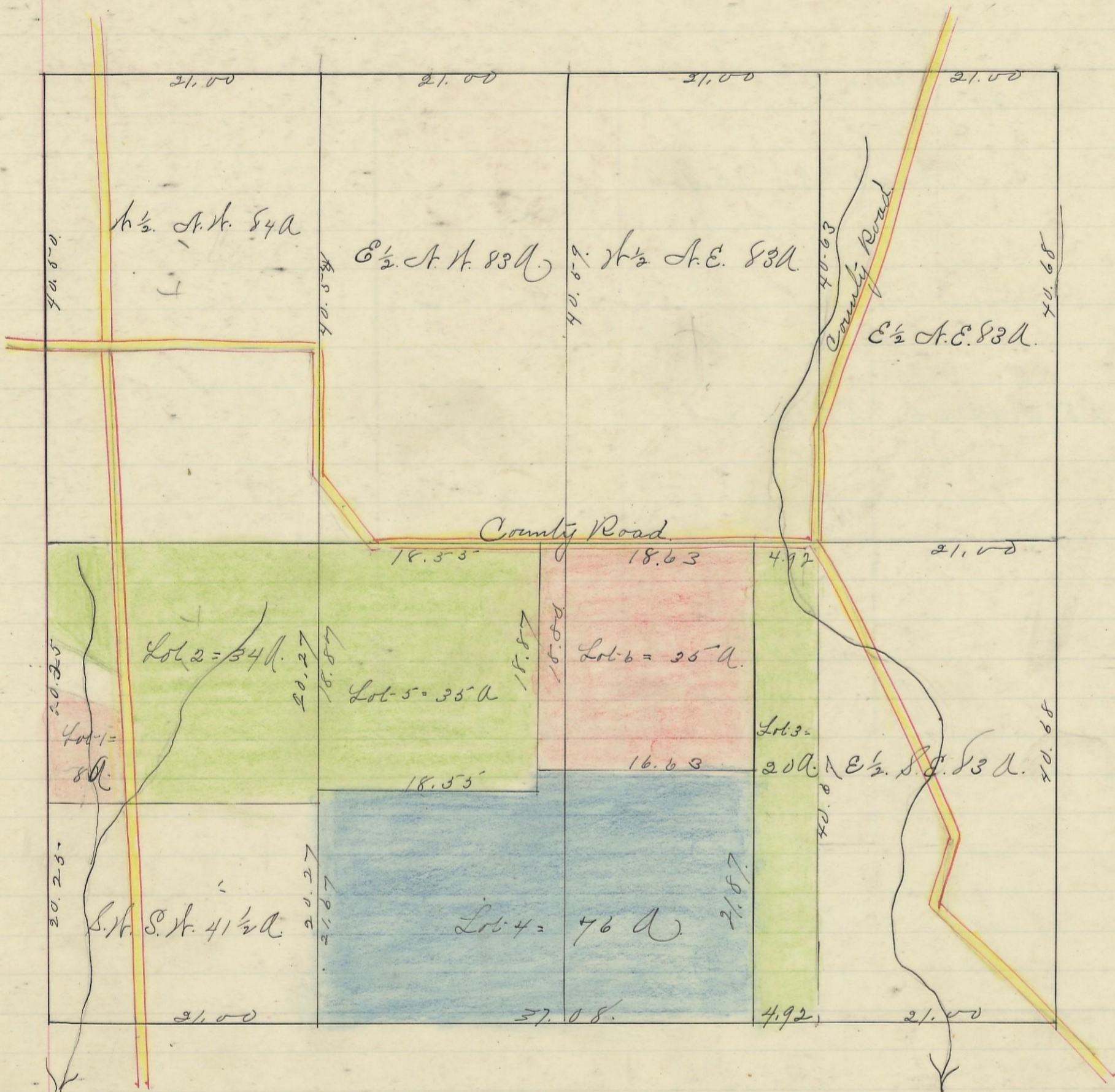
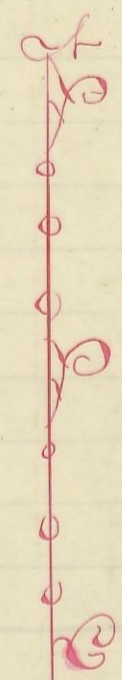


MARION, No. 15, Range 17, Section No. 24



Variation
50 ft

Scale 10 chs to an inch



I hereby Certify the above to be a correct Plat of Fractional Lots in Section
 No. 24 Township No. 15 Range No. 17,ocking County Ohio.
 Surveyed 1880. By James Davis C. S. & C. W.
 Plated 1883 by Levi Davis Surveyor.
 Rec'd and Recorded Dec 20th 1883.
 Jacob Weaver Recorder. C. C. W.

I hereby Certify the above to be a true copy.
 P. D. Sloan Recorder. C. C. W.
 The above Plat transferred from Plat Book "A" Page 224. Record of fractional
 lots. C. C. W. June 5th 1901.
 P. D. Sloan Recorder. C. C. W.