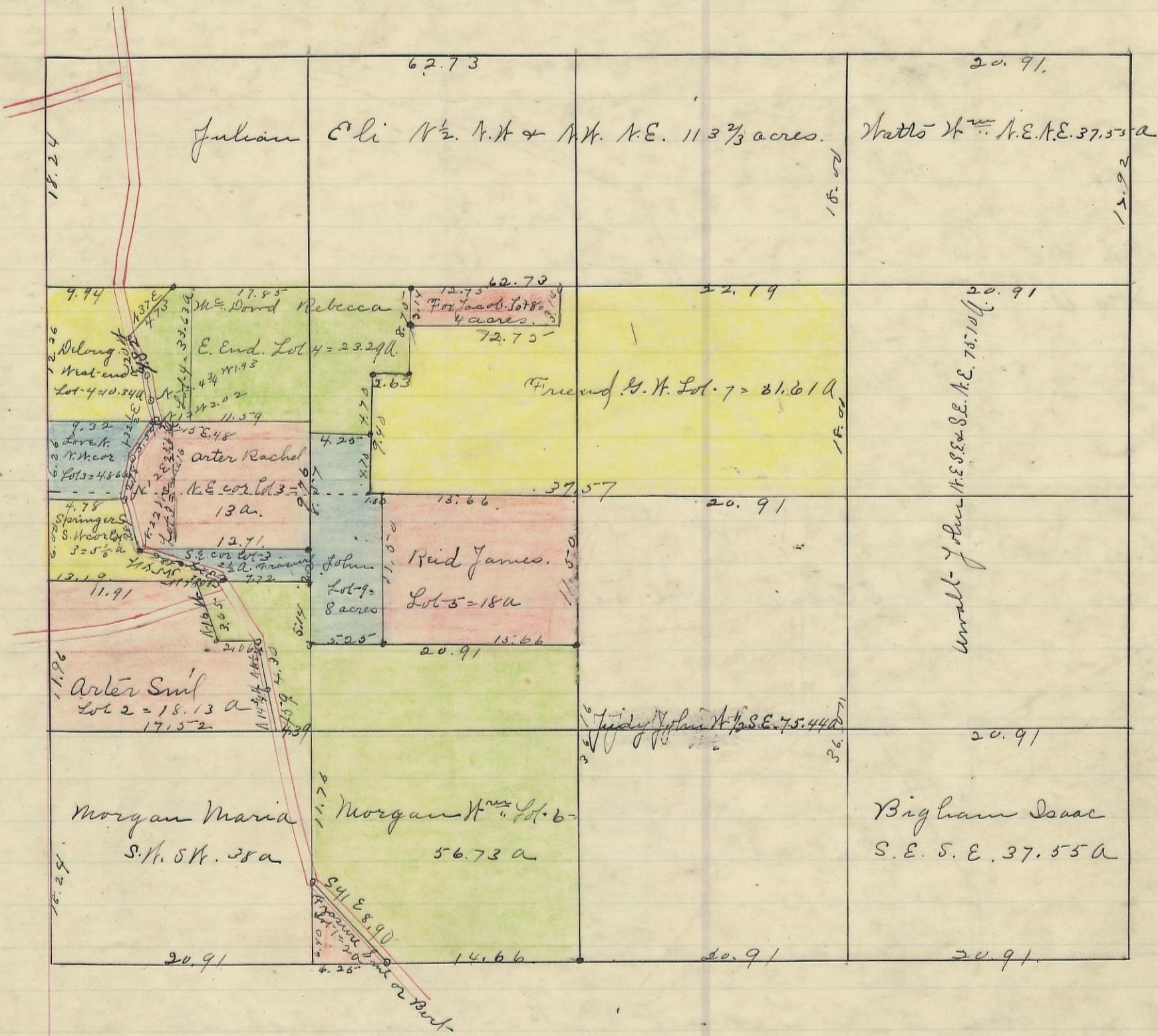


PERRY, No. 12, Range 19, Section No. 1



Variation  
30 N

Scale 10 chs to an inch

I hereby Certify the above to be a correct Plat of a Survey of Section No. 1,  
Township No. 12, Range No. 19, Jackson County Ohio as surveyed by James H.  
Davis and Platted by Levi Davis. Levi Davis Surveyor.  
August 1882.  
Recd and Recorded August 22 1882.  
Jacob Weaver Recorder.

I hereby certify the above to be a true copy.  
P. D. Sloan Recorder. S. C. C.  
The Above Plat transferred from Plat Book "B" page 74. Record of  
fractional lots. S. C. C. June 7 1901  
P. D. Sloan  
Recorder S. C. C.