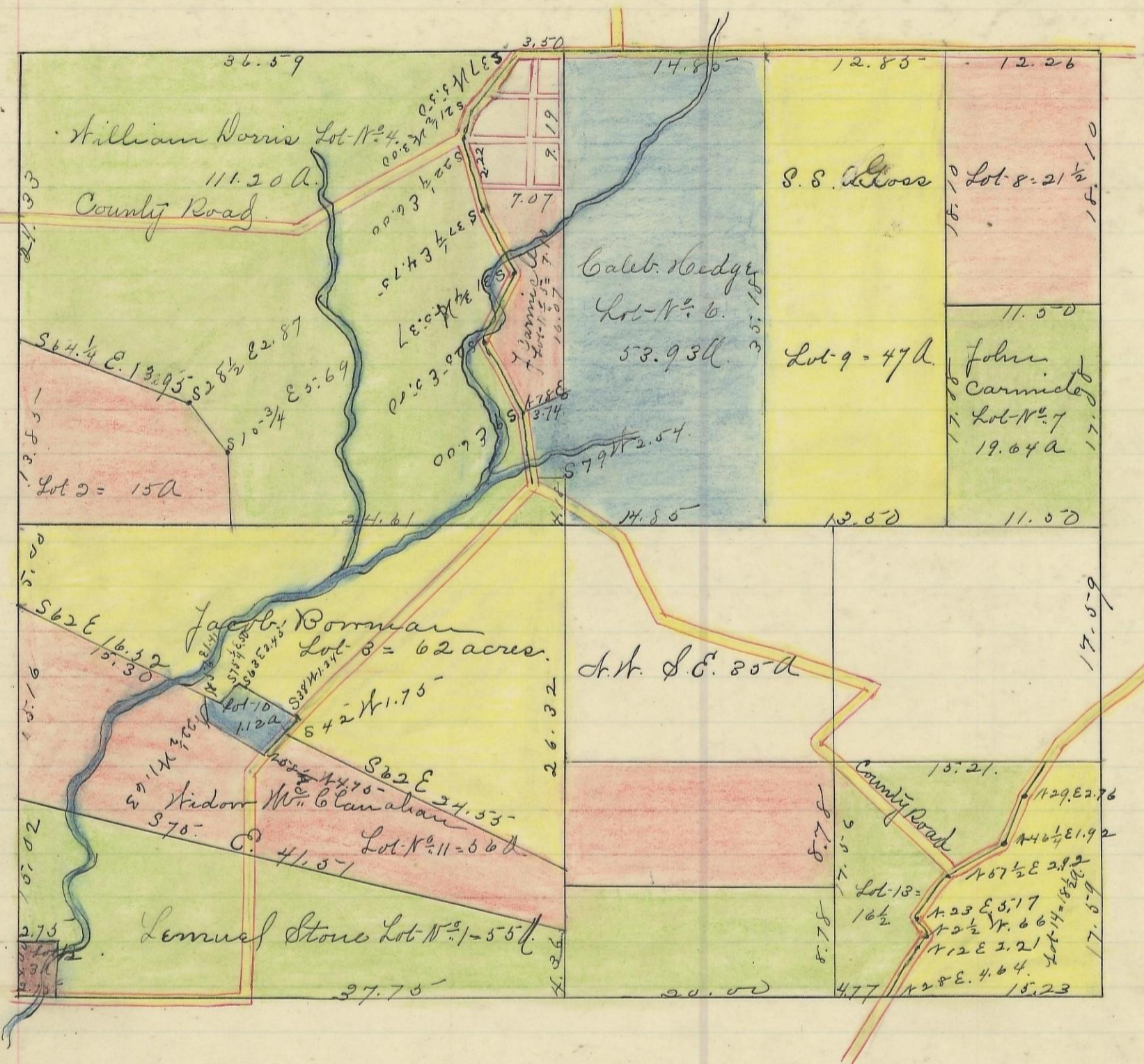
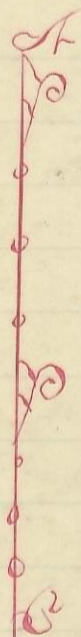


PERRY, No. 12, Range 19, Section No. 3



Variation
3 1/2'



Scale 10 chains to an inch

I hereby certify the above to be a correct Plat of Fractional Lots in Section No. 3, Township No. 12, Range No. 19,ocking County Ohio Surveyed by James & Levi Davis 1875 & 1881 Surveyors Recd and Recorded April 2nd 1884.
 Jacob. Weaver. Recorder S. C. D.

I hereby certify the above to be a true copy.
 P. D. Sloan Recorder. S. C. D.

The above Plat transferred from Plat Book "A" page 427. Record of Fractional Lots. S. C. D. June 7th 1901
 P. D. Sloan Recorder. S. C. D.