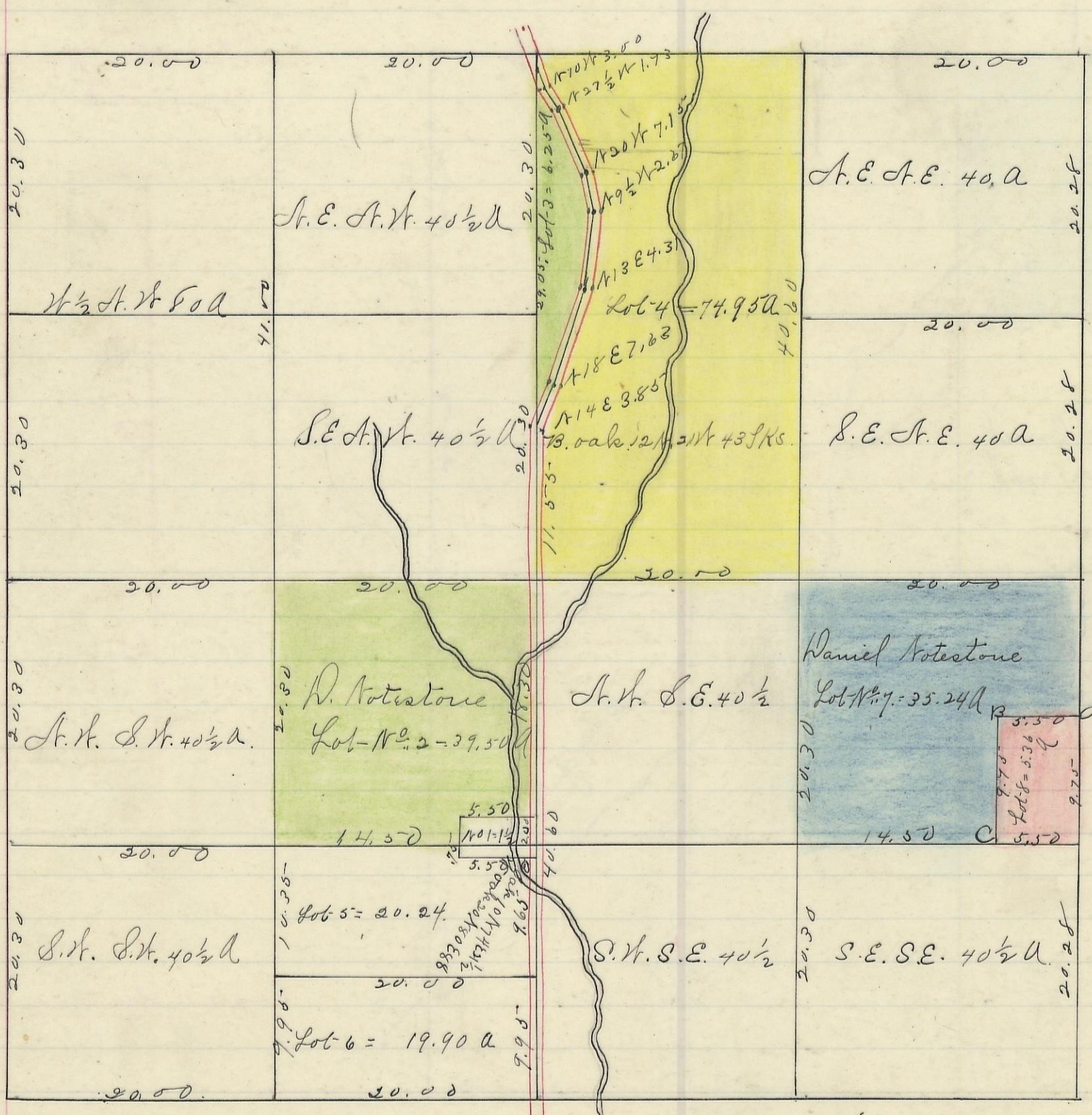


PERRY, No. 12, Range 19, Section No. 11



Variation
1030' N

Scale 10 chs to an inch

I hereby Certify the above to be a correct Plat of Fractional Lots in Section
 No. 11, Township No. 12, Range No. 19,ocking County Ohio Surveyed 1870.
 By Levi Davis Deputy Surveyor.
 Rec'd and Recorded. April 3rd 1884.
 Jacob. Weaver. Recorder. S. C. W.

I hereby Certify the above to be a true copy
 P. D. Sloan, Recorder S. C. W.
 The Above Plat transferred from Plat Book "A" page 434. Record of
 fractional lots. S. C. W. June 8th 1901.
 P. D. Sloan Recorder. S. C. W.