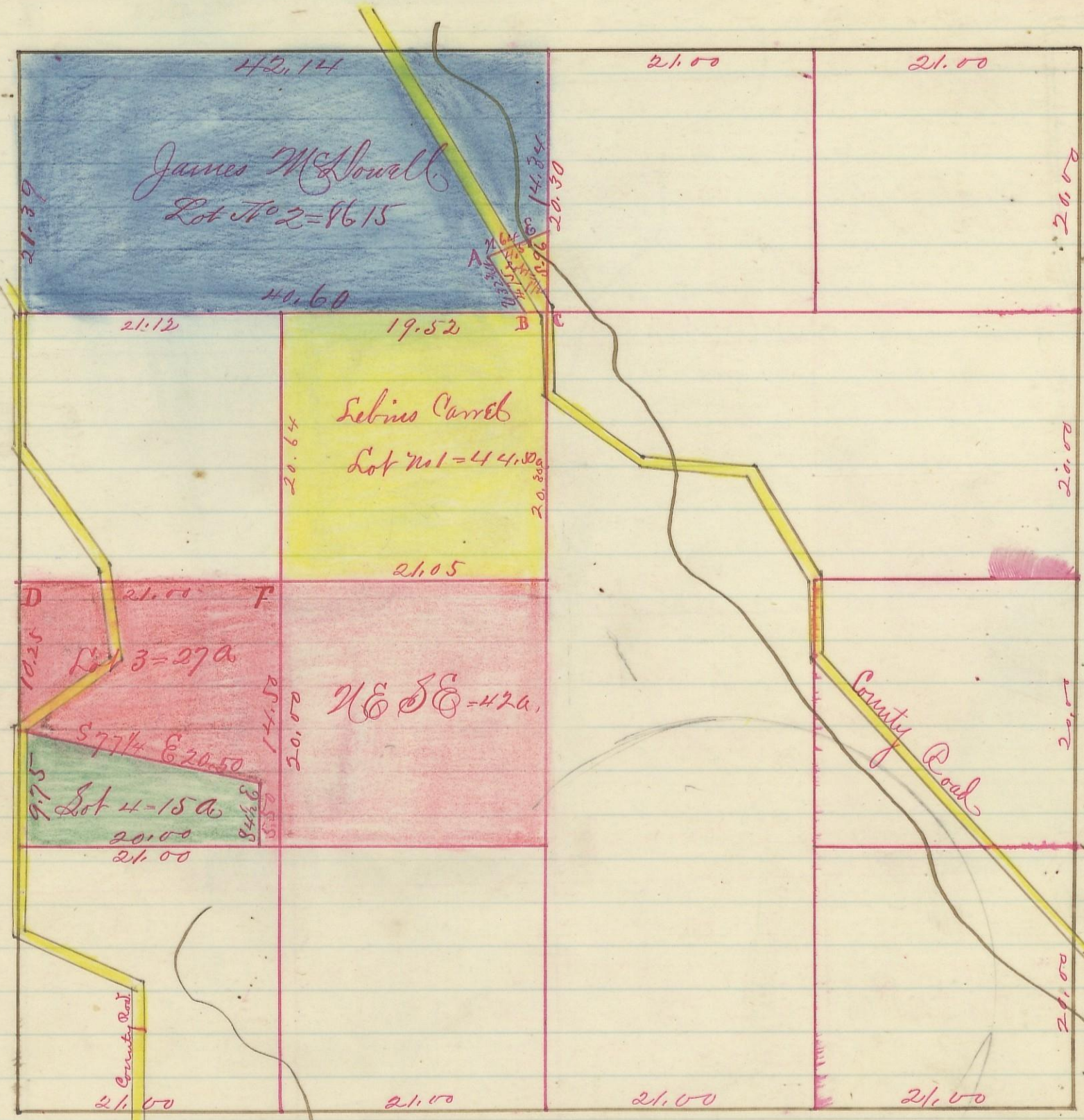


Section No 12 Township No 12 Range No 19

Variation

1°30' N



Scale 10 chs to an inch

I hereby certify the above to be a correct Plat of Fractional Lots  
 in Section No 12 Township No 12 Range No 19 Hocking County  
 Ohio Surveyed 1869 By Levi Davis Surveyor N.C.  
 Recd and Recorded April 4<sup>th</sup> 1884  
 A B Oak 10 S 16 E 3. Maple 12 N 66 1/2 E 54  
 B stone  
 C Maple 22 N 12 1/2 E 22, N Q 24 S 64 1/2 W 42.  
 D B Oak 16 N 47 E 26. No 18 S 45 1/2 N 24.  
 E Stone  
 F. Hickory 10 S 44 E 55. No 10 S 85 1/2 E 60.

Jacob Weaver Recorder N.C.

340