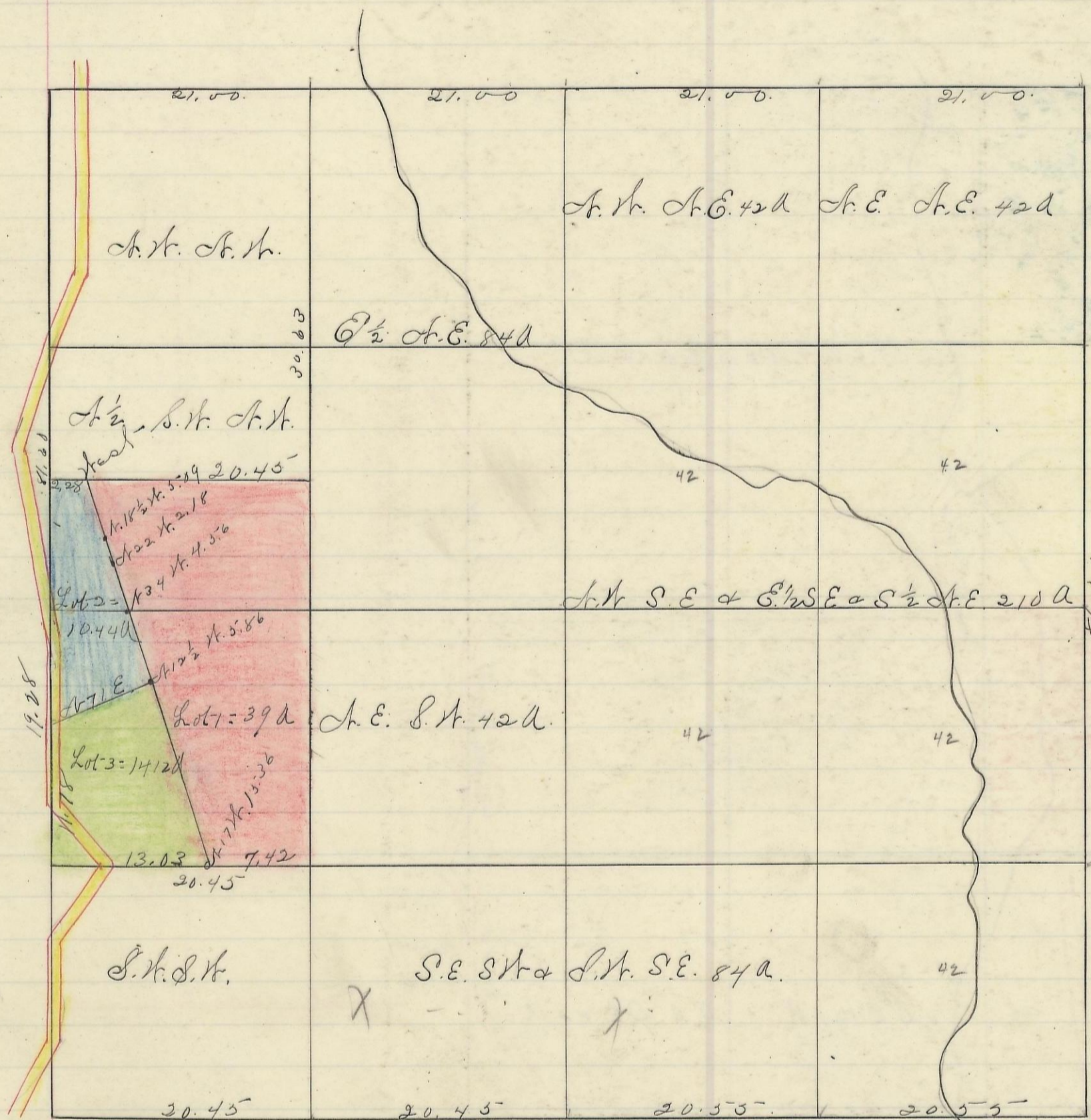


PERRY, No. 12, Range 19, Section No. 13



Variation  
1045'

Scale 10 chs to an inch

I hereby certify the above to be a correct plat of Fractional Lots in Section No. 13, Township No. 12, Range No. 19,ocking County Ohio Surveyed 1870 By Levi Davis Surveyor. S. C. W.

Rec'd and Recorded April 4<sup>th</sup> 1884.  
Jacob. Heaver. Recorder S. C. W.

I hereby certify the above to be a true copy.  
P. D. Sloan Recorder

The above Plat transferred from Plat Book "A" Page 486. Record of fractional lots. S. C. W. June 10<sup>th</sup> 1901  
P. D. Sloan  
Recorder S. C. W.