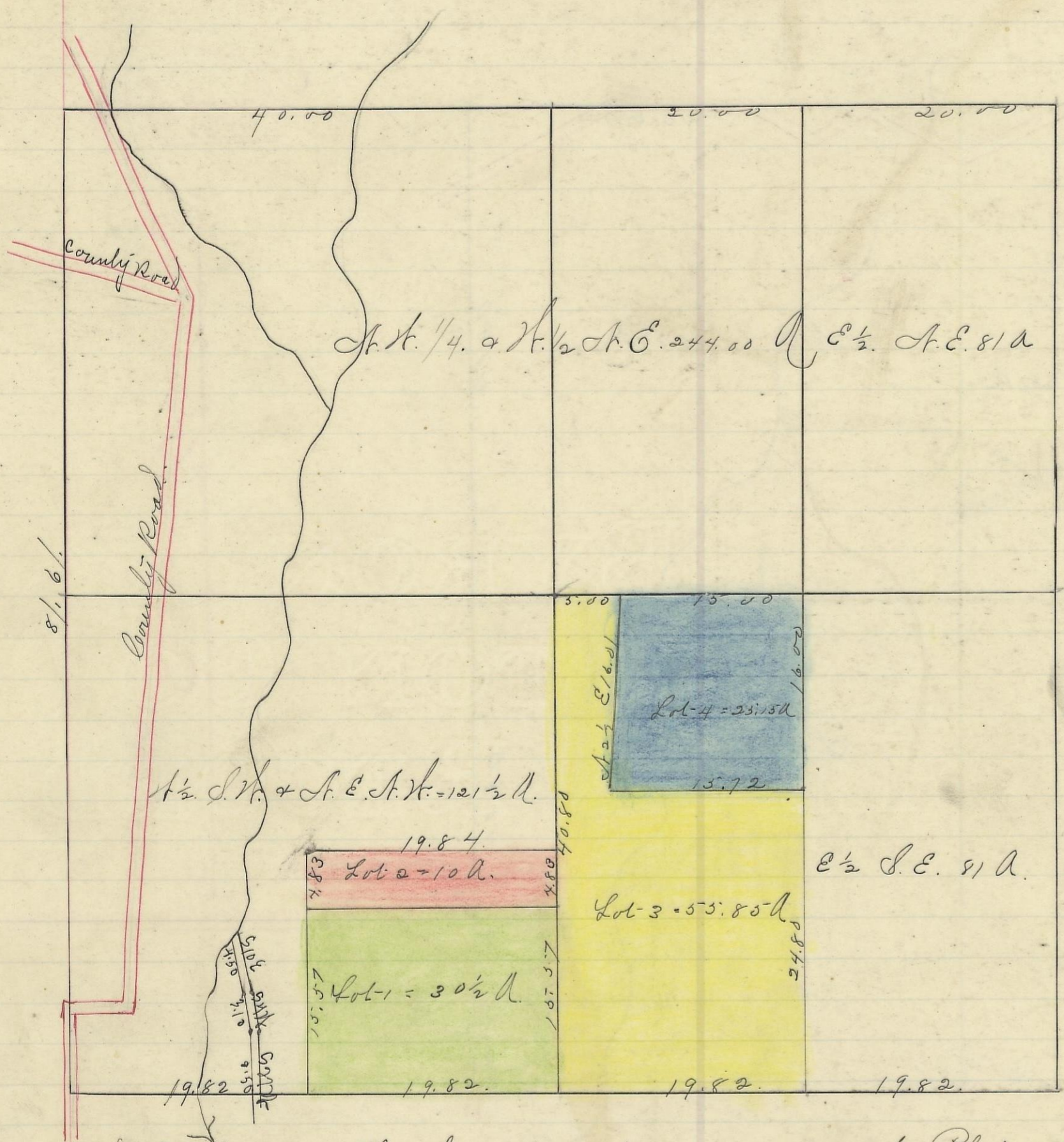
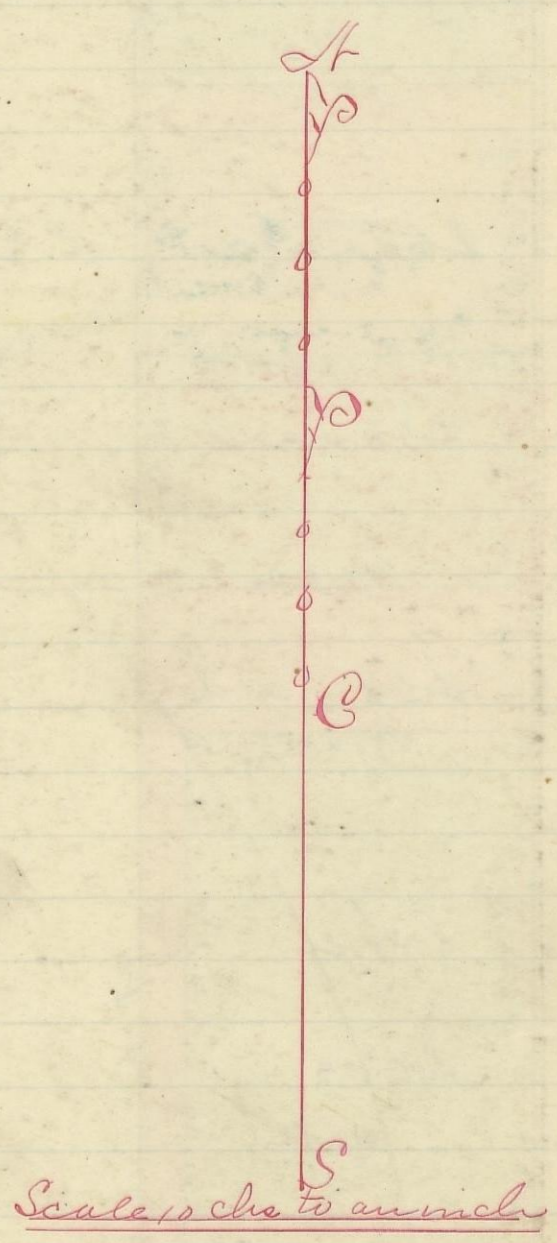


PERRY, No. 12, Range 19, Section No. 16.



Variations
30 ft



I hereby Certify the above to be a correct Plat of Fractional Lots in Section No. 16. Township No. 12. Range No. 19.ocking County Ohio Surveyed 1880 By Levi Davis Surveyor.

Rec'd and Recorded April 4 "1884

Jacob Weaver. Recorder S. C. W.

I hereby Certify the above to be a true copy. P. D. Sloan

Recorder S. C. W.

The above Plat transferred from Plat Book "A" page 428. Record of fractional lots S. C. W. June 10 " 1901 P. D. Sloan Recorder S. C. W.