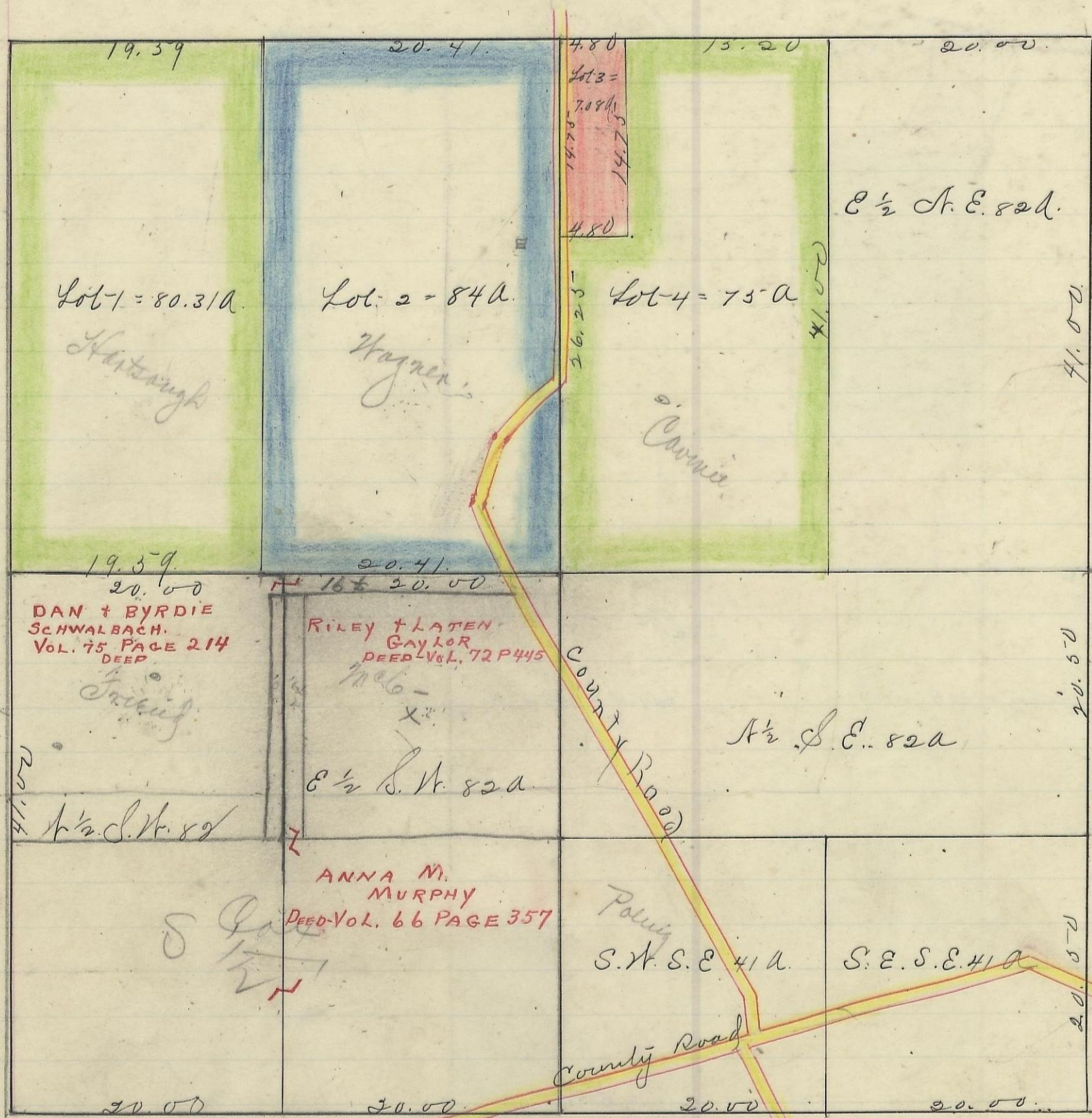
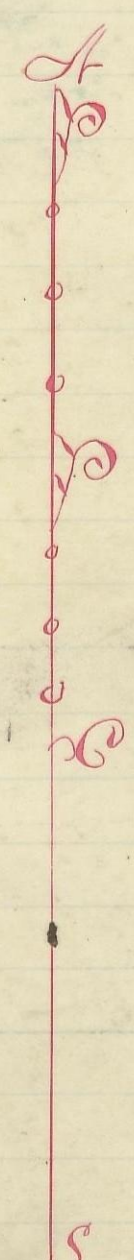


PERRY, No. 12, Range 19, Section No. 27



Variation
1° 43' W

Scale is chs to an inch



I hereby certify the above to be a correct Plat of Fractional Lots in Section
 No. 27 Township No. 12 Range No. 19.ocking County Ohio Surveyed 1870
 By Levi Davis Surveyor. S. C. C.

Rec'd and Recorded April 5th 1884.
 Jacob Weaver, Recorder. S. C. C.

I hereby certify the above to be a true copy.
 P. D. Sloan Recorder

The above Plat transferred from Plat-Book "A" page 446. Record of frac-
 tional lots. S. C. C. June 11th 1901.
 P. D. Sloan Recorder. S. C. C.