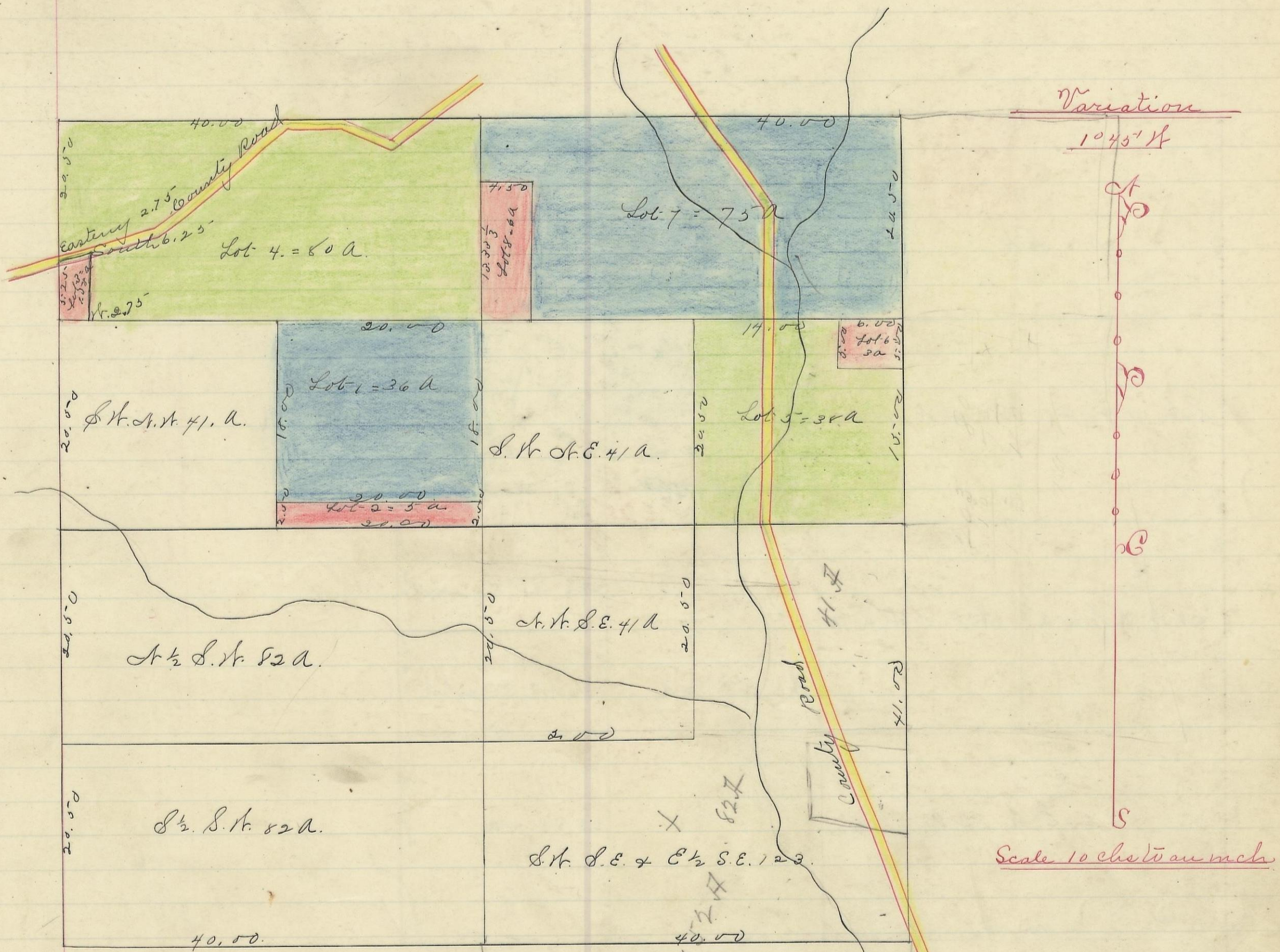


PERRY, No. 12, Range 19, Section No. 34



I hereby certify the above to be a correct Plat of Fractional Lots in Section No. 34. Township No. 12. Range No. 19. Jackson County Ohio. Surveyed 1870.  
By Levi Davis Surveyor S. C. D.

Rec'd and Recorded April 12<sup>th</sup> 1884.

Jacob Weaver Recorder.

I hereby certify the above to be a true copy.

P. D. Sloan Recorder. S. C. D.

The above Plat transferred from Plat Book "A" page 449. Record of fractional lots. S. C. D. June 12<sup>th</sup> 1901.

P. D. Sloan Recorder.