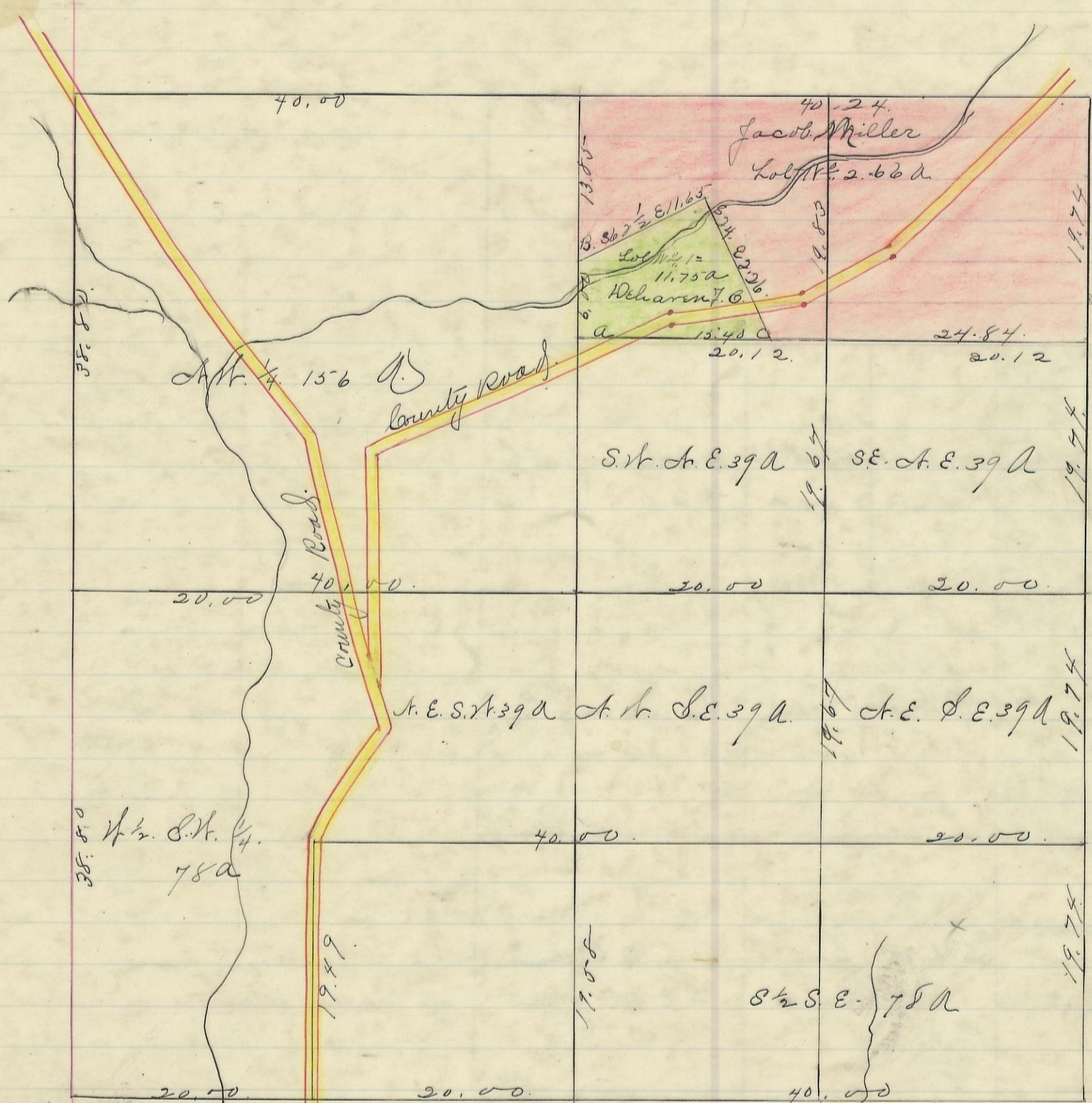
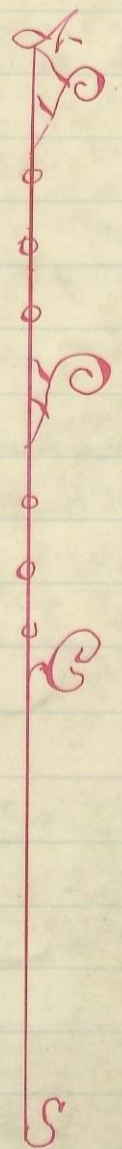


SALT CREEK, No. 11, Range 19, Section No. 2.



Variation  
1030' N



Scale 10 chs to an inch

Corner  
Bearing of tree  
Diameter  
Corner  
Distances

|    |           |     |                |
|----|-----------|-----|----------------|
| A. | Maple     | 20. | S 46 E 53.     |
|    | Gum       | 9.  | N 76 E 42.     |
| B. | Willow    | 3.  | N 75 E 40 1/2. |
| C. | H. Walnut | 8.  | S 2 N 16.      |

I hereby certify the above to be a correct Plat of Fractional Lots in Section No. 2. Township No. 11 Range No. 19.

Locking County Ohio.

Surveyed. 1869. By Levi Davis Surveyor H.C.W.

Received and Recorded. March. 15<sup>th</sup> 1884.

Jacob. Beaver. Recorder. S.C.W.

I hereby certify the above to be a true copy.

P. D. Sloan Recorder.

The above Plat transferred from Plat Book "A" page 403. Record of fractional lots. S.C.W. June. 17<sup>th</sup> 1901.

P. D. Sloan

Recorder. S.C.W.