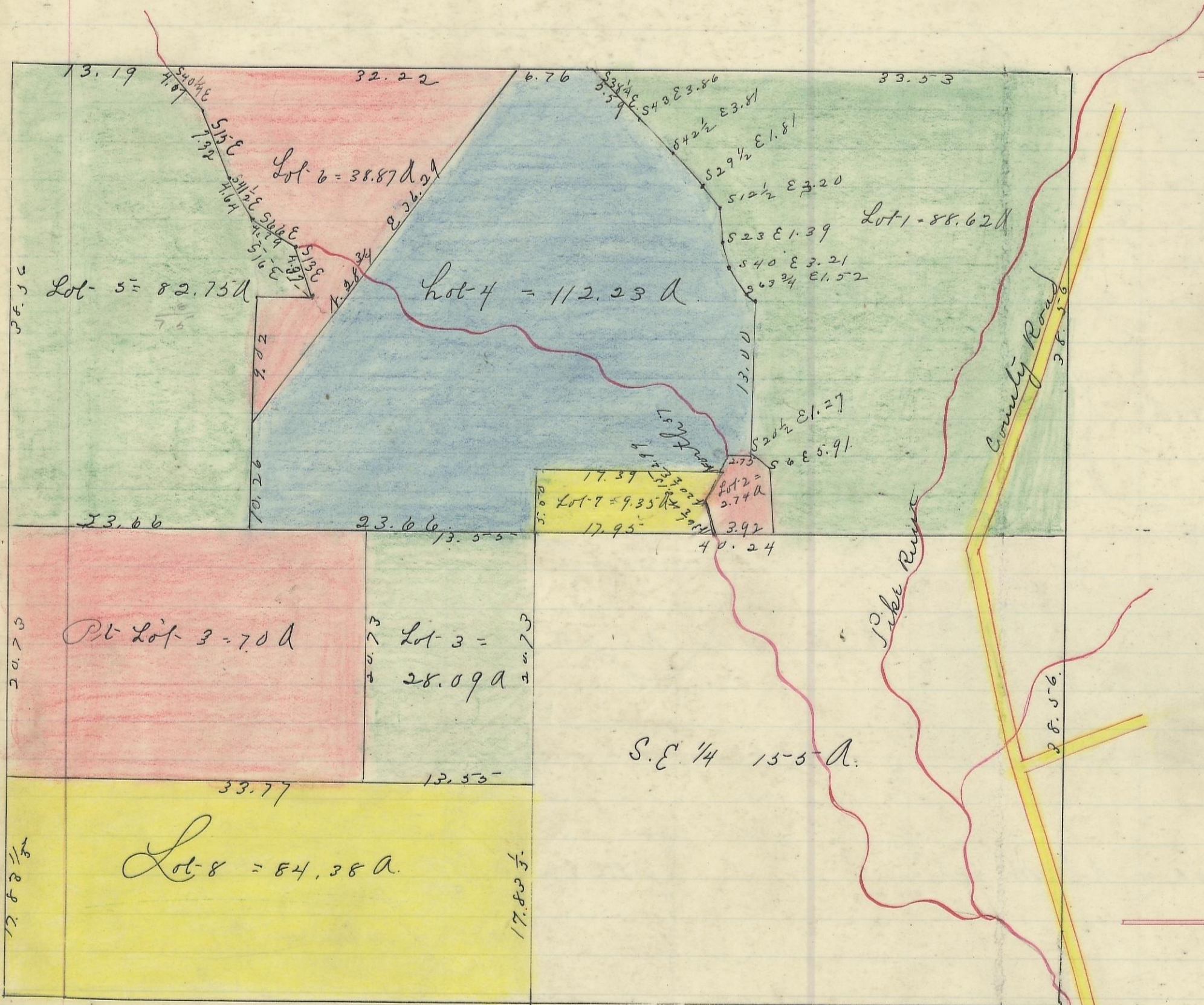


MP 257

SALT CREEK, No. 10, Range 19, Section No. 6.



I hereby certify the above to be a correct Plat of Fractional Lots in Section No. 6. Township No. 10. Range No. 19. Locking County Ohio. Surveyed 1870 By Levi Davis Sur. S.C.C. and Subsequently By James H. Davis Surveyor of said County

Received and Recorded March 8th 1884

Jacob Weaver Recorder.

I hereby Certify the above to be a true copy.

P. D. Sloan.

The Above Plat transferred from Plat Book "A" page 402 Record of fractional lots S.C.C. July. and. 1901

P. D. Sloan Rec^d S.C.C.