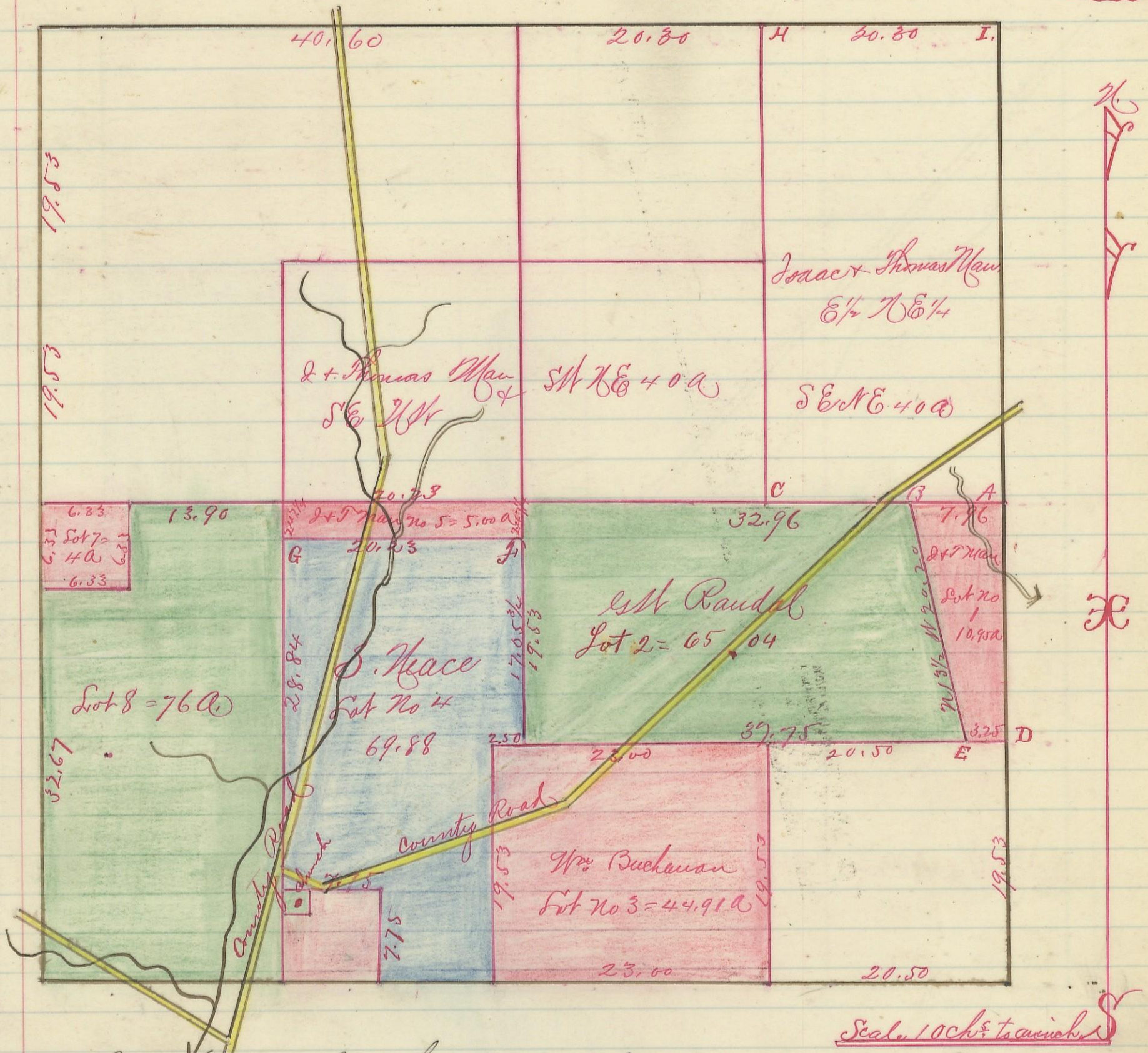


Section No 29 Township No 11 Range No 19

72

Variation  
1030' 19"



I hereby certify the above to be a correct Plat of Fractional Lots in Section No 29 Township No 11 Range No 19. Hocking County Ohio. Surveyed 1869. By Levi Davis Surveyor N.C.

Received and Recorded March 31<sup>st</sup> 84  
Jacob Weaver Recorder

Corner	Bearing	Dist	Corner	Distance	Remarks
A	Sum	6 S 40 E	58 1/2		
B	Maple	8 S 70 E	48		
C	Hickory	3 S 4 E	11 3/4		
D	Locust	6 S 31 1/2 W	23		
E	Chestnut	8 S 67 W	42 1/2		
F	Locust	2 N 48 W	12		
G	B Walnut	2 N 79 1/2 W	20		
H	B oak	4 S 57 W	24 1/2		
I	Hickory	6 N 22 W	45 1/2		
J	Hickory	4 S 25 E	19 1/2		
K	W oak	4 N 80 E	39		
L	W oak	10 N 31 W	76		
M	Poplar	16 S 29 E	22		
N	Dogwood	6 Corner			