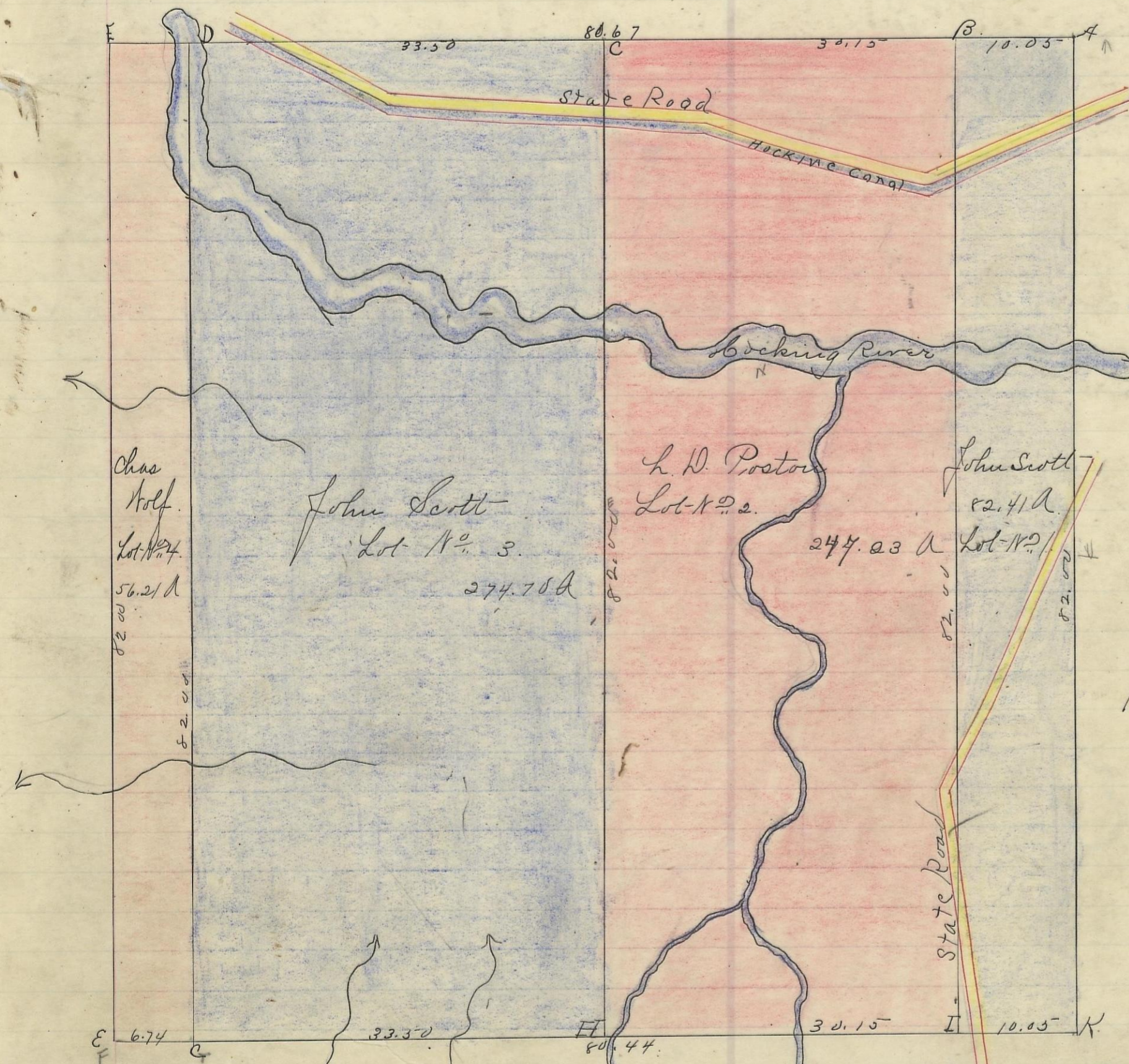


STARR, No. 12, Range 16, Section No. 5



- A. white Oak 10 D. 132 N 99 Lho.
- Red oak 20. 550. N. 150 "
- B. Beach East "
- Mulberry South "
- C Hickory 15 S. 11 1/2 E. 137 "
- Sycamore 9. N 25 N. 27 1/2 "
- D Sycamore 16. West "
- E Do. 16. East "
- F Ches Oak N. 16 1/2 N. 35 "
- Do 18. N. 32. E 30 "
- G Poplar 24. N. 84. E 38 "
- Gum.
- H. Ches Oak. 24 S. 29 N. 10 "
- Do. 10 N. 20 N. 12 "
- I. Ches oak. 10. Corner Tree B. oak. 10 N 32 E. 22 "
- K Ches. Oak. 18. N 51 3/4 N. 47. Larks
- L. Hickory N 26. N 12 1/2
- Red beed 4. 576. E 6 1/2

Variation  
20 N  
Scale 10 chs to an inch

I hereby certify the above to be a correct Plat of Fractional Lots in Section No. 5, Township No. 12, Range No. 16, Ohio Counties purchase Hocking County Ohio containing 660.55 Acres. Surveyed 1869. by Levi Davis Sur. S. C. W.

J. C. Smart Recorder. S. C. W.

- John Scott Lot No. 1. = 82.41 A
- L. D. Poston " " 2 = 247.23 A
- John Scott " " 3 = 274.70 A
- Chas Wolf " " 4 = 56.21 A
- Total 660.55 Acres.

I hereby certify the above to be a true copy. P. D. Sloan Recorder.

The Above Plat transferred from Plat Book "A" page 150 Record of fractional lots. S. C. W. July 3rd 1901 P. D. Sloan Recorder. S. C. W.