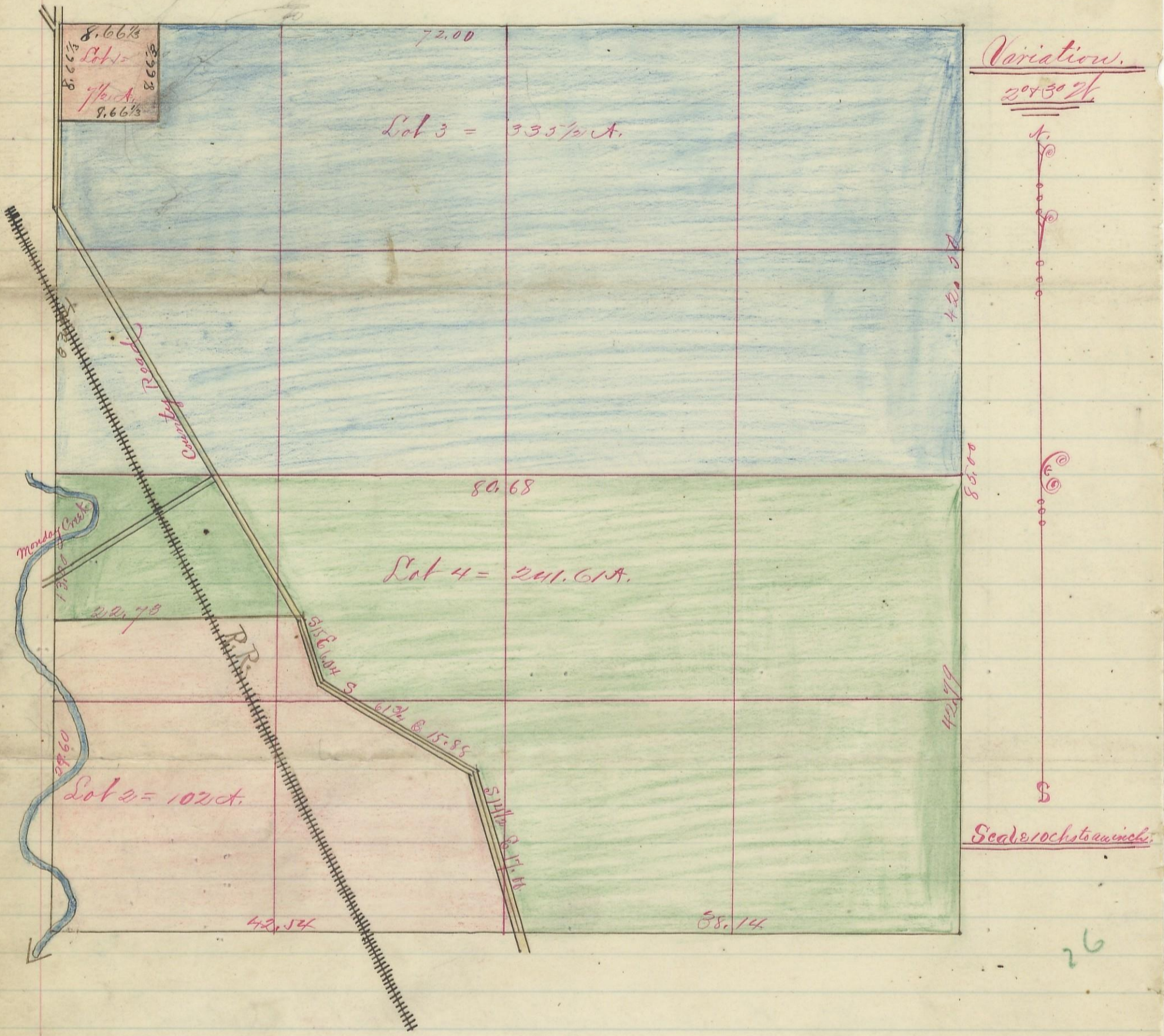


SECTION No. 7. TOWNSHIP No. 13 RANGE No. 15. ✓



I hereby certify the above to be a correct Plat of Fractional Lots in Section No. 7 Township No. 13 Range No. 15 Wabash County Ohio Surveyed 1870 & 1877. By Levi & James Davis Surveyors.

Received April 30<sup>th</sup> 1883 at 6 o'clock PM.

Recorded May 12<sup>th</sup> 1883.

Jacob Weaver Recorder & Co.