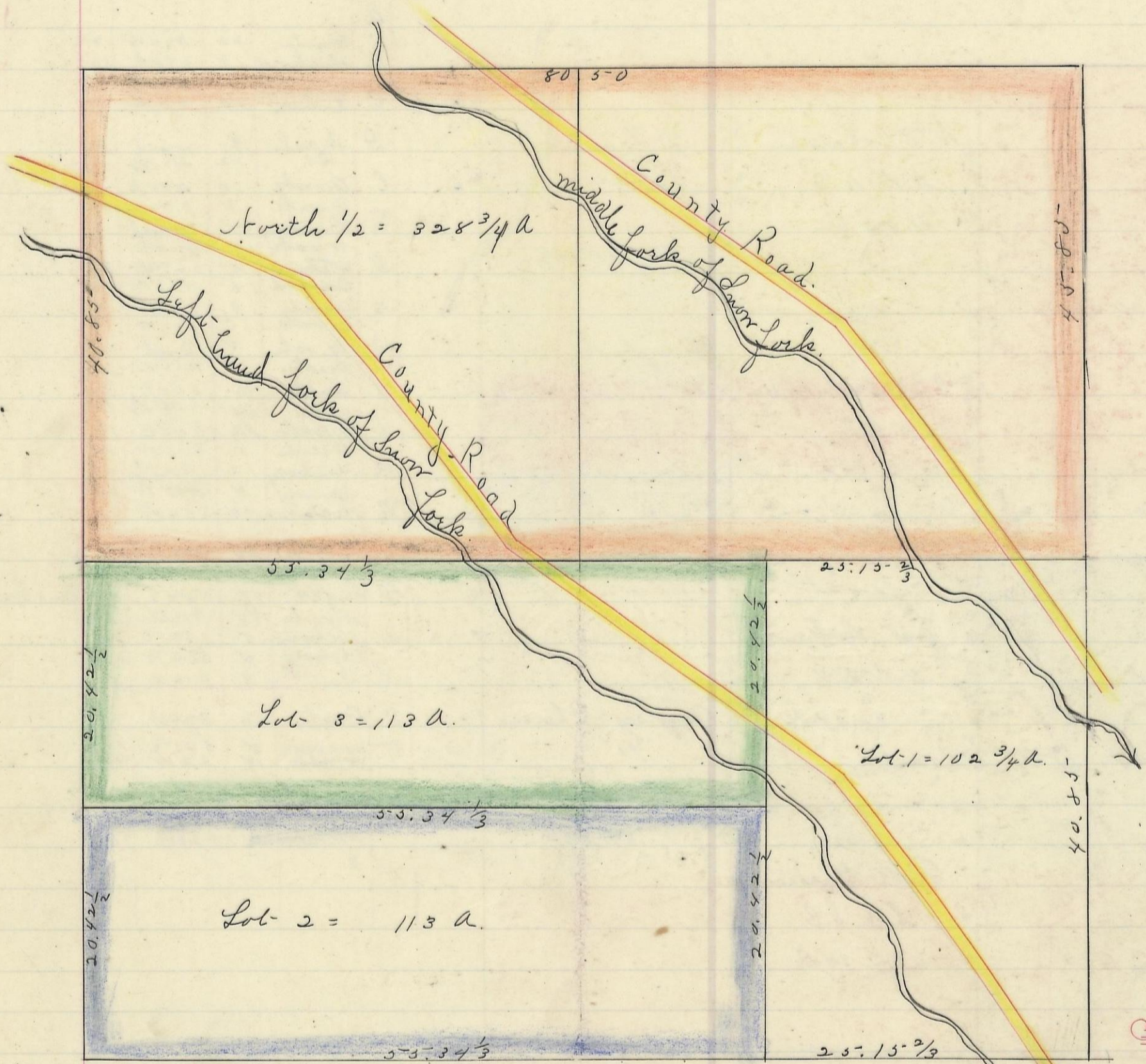


WARD, No. 13, Range 15, Section No. 11

For Second Plat of Sec. 11 See Page 430.



Variation
2 1/2'



Scale 10 chs to an inch

I here by certify the above to be a correct Plat of Fractional Lots in Section No. 11. Township T². 13 Range R². 15 Jackson County Ohio Surveyed 1870. By Levi Davis Surveyor.

Rec'd Nov. 13th 1883 and Recorded Nov. 13th 1883
Jacob Weaver.
Recorder.

The above Plat transferred from Plat Book "A" Page 264. Record of fractional lots S. C. O. July 15th 1901. and Certified to be a true and correct copy by.
P. D. Sloan
Recorder S. C. O.