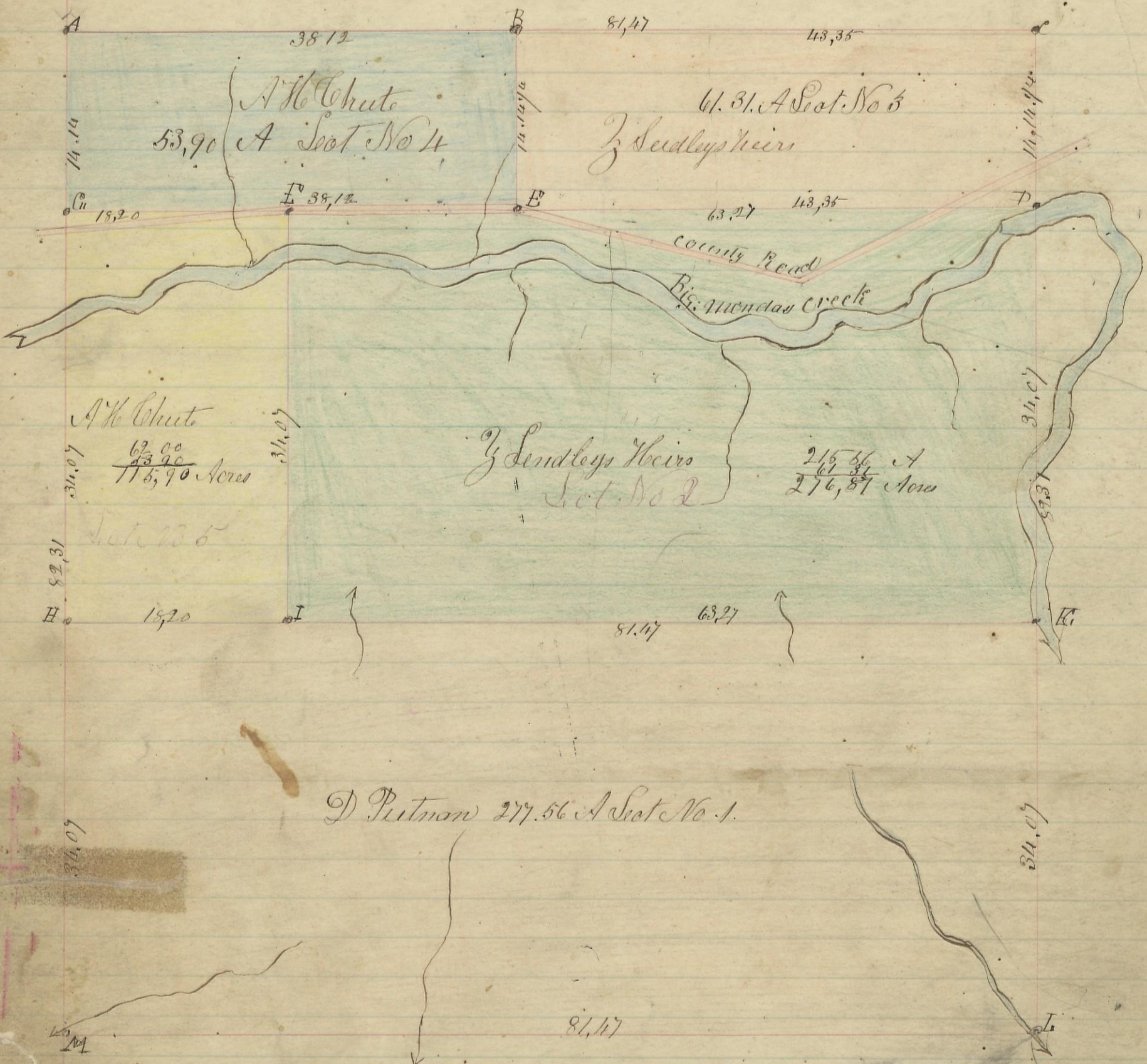


Section No. 20. Township No. 13. Range No. 15. Ward 1 P.



D Putman 277.56 A Sect No. 1.

I hereby Certify the foregoing to be a correct Plat of Fractional Sals in Section No. 20, Township No. 13, Range No. 15, Ohio Counties purchase Hocking County Ohio containing 670.53 Acres Surveyed February 1870, by Levi Davis Sen W. C., O

Recorded February 16th 1870 by J. P. Stewart Recorder W. C., O

variation 20° 11'

- A Ash 20.85 to 21 Stone planted
 - B Chest oak 12.8 12.2 25 Do. 16. 16. 13.
 - C Hickory 58 1/2 to 71 Sycamore 88 61 1/2 30
 - D Blacknut 35. 6 1/2. 89 1/2 10. 10 2 1/2
 - E Stone Hickory 16 10 95 1/2
 - F to oak 8. 9 14 6 30
 - G
 - H
 - I
 - J
 - K
 - L
 - M
- D Putman Sect No. 1: 277.56 ac
- Z Sedley's Heirs Sect No. 2: 215.56 ac
- A. H. Chute Sect No. 4: 53.90 ac
- 5 62.00 115.90
- Total 670.53 ac

seal rock to be used