

33.25

3.83 4.85 6.55 6.55 4.88 4.88 4.88 4.88

#31845--See Resolution in Misc. Record
 Vol.4, Pg.333 to Vacate Part of
 Road, Ward Twp. Sec.20

Nov. 16, 1977 *Esther Carpenter*
 Hocking Co. Recorder

20.20 Somers J. H. Lot 7 sec 21 - 67.68a

Lot 6 sec 21 - 88.69a

4.87
*error to sections
204 21 T13 R 15

Line between sections 204 21 T13 R 15
38.12 ch.

33.25

Somers J. H.
Lot 4 sec 20 - 32.22a



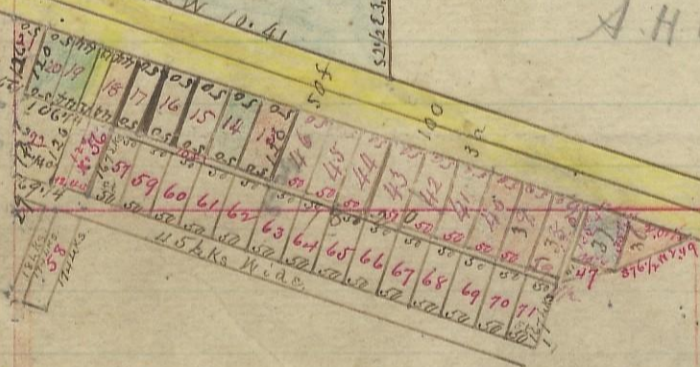
517 N. H. S.

586 1/2 W 24.00 ch.

A. H. Chute 12.84a

Lot 3 - 61.31a

Sundley, Mary M. 12a
 Kistler sub 10a
 Kistler Howard 13a
 Harper Jno. 13a
 Ripley C. H. 10a
 Harper Jno. 10a
 " 10a
 " 10a



50	50	50	50	50	50	50	50	50	50
100	100	100	100	100	100	100	100	100	100
150	150	150	150	150	150	150	150	150	150
200	200	200	200	200	200	200	200	200	200
250	250	250	250	250	250	250	250	250	250
300	300	300	300	300	300	300	300	300	300
350	350	350	350	350	350	350	350	350	350
400	400	400	400	400	400	400	400	400	400
450	450	450	450	450	450	450	450	450	450
500	500	500	500	500	500	500	500	500	500

8.7 6 5 4 3 2 1

Sundley, J. Lot 2 - 215.56a

Chute, A. H. Lot 5 sec 20 - 62a

Sundley F. D.
Lot 10 - 33.93a

Henry Kate
Lot 9 - 33.93a

34.07

34.07

34.07

34.07

18.20

9.96

9.96

3.83 4.85 6.55 6.55 4.88 4.88 4.88 4.88

I certify the above to be a correct plat of a subdivision of Lots 4 in Sec. 20 & Lot 6, in Sec. 21, T. 13 R. 15.

Rec'd for Record, June 25th 1880 at 4 1/2 o'clock, P.M.
 Recorded June 25th 1880. B. J. White, Recorder, H. C.