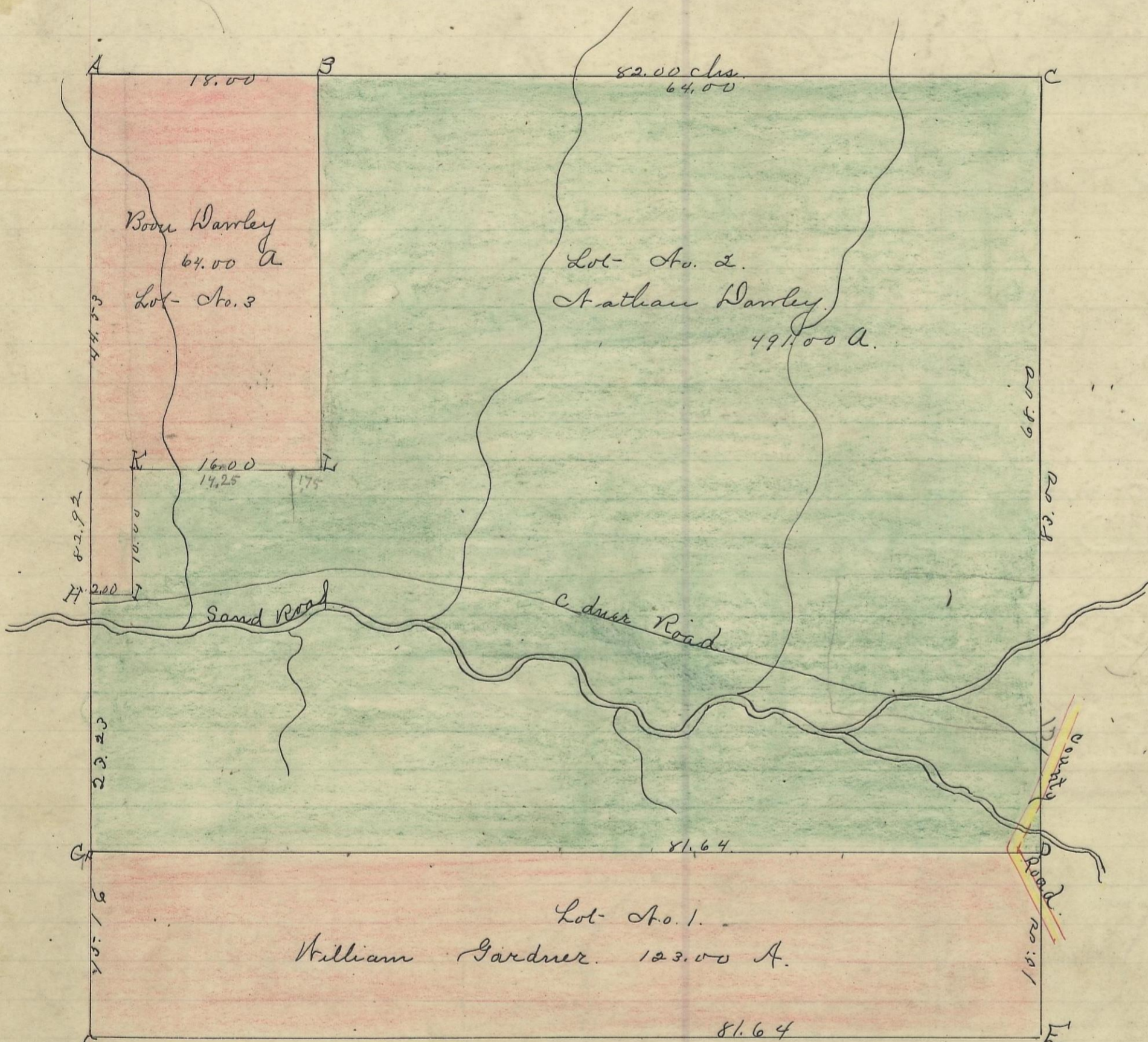


WARD, No. 13, Range 15, Section No. 28



I hereby Certify the foregoing to be a correct Plat of Fractional Lots in Section No. 28 Township No. 13 Range No. 15 Ohio Companies Purchase, Locking County Ohio. Containing 678.00 Acres Surveyed February 1870. by Levi Davis Sur. S. C. W.

Recorded February 17th 1870 by J. C. Smart. Recorder. S. C. W.

U. W. oak. 20 S 44 E 20. No. 10 N. 7 E 48.	William Gardner. Lot- No. 1. 123.00
B. B. oak. 2 corner tree Beech 10 S. 76 N. 42.	Nathan Dawley 2. 491.00
Maple 22. N. 78 1/2 W. 36 1/2 Beech 16 N. 67 W. 34.	Boon Dawley 3. 64.00
C Gum 8 S 54 E 19 1/2. B. oak. 15 S 69. W. 32 1/2	Total. 678.00
D. Sugar 20 N. 21 E 31. B. oak. 9 S. 59 1/2 E 37 1/4.	
E Beech 15 North 82 N. oak. 9 S. 81 N. 41 1/4.	
F W. oak. 30 N. 36. N. 37 3/4. Buckeye 7 N. 41 1/4 E 18	
CH Beach 10 N. 55 E 23 Beech 14 N. 48 W. 24.	

I hereby Certify the above to be a true copy.

P. D. Sloan.

The Above Plat transferred from Plat Book "A" page 158 Record of fractional lots S. C. W. July. 29" 1901. P. D. Sloan. Rec^d S. C. W.