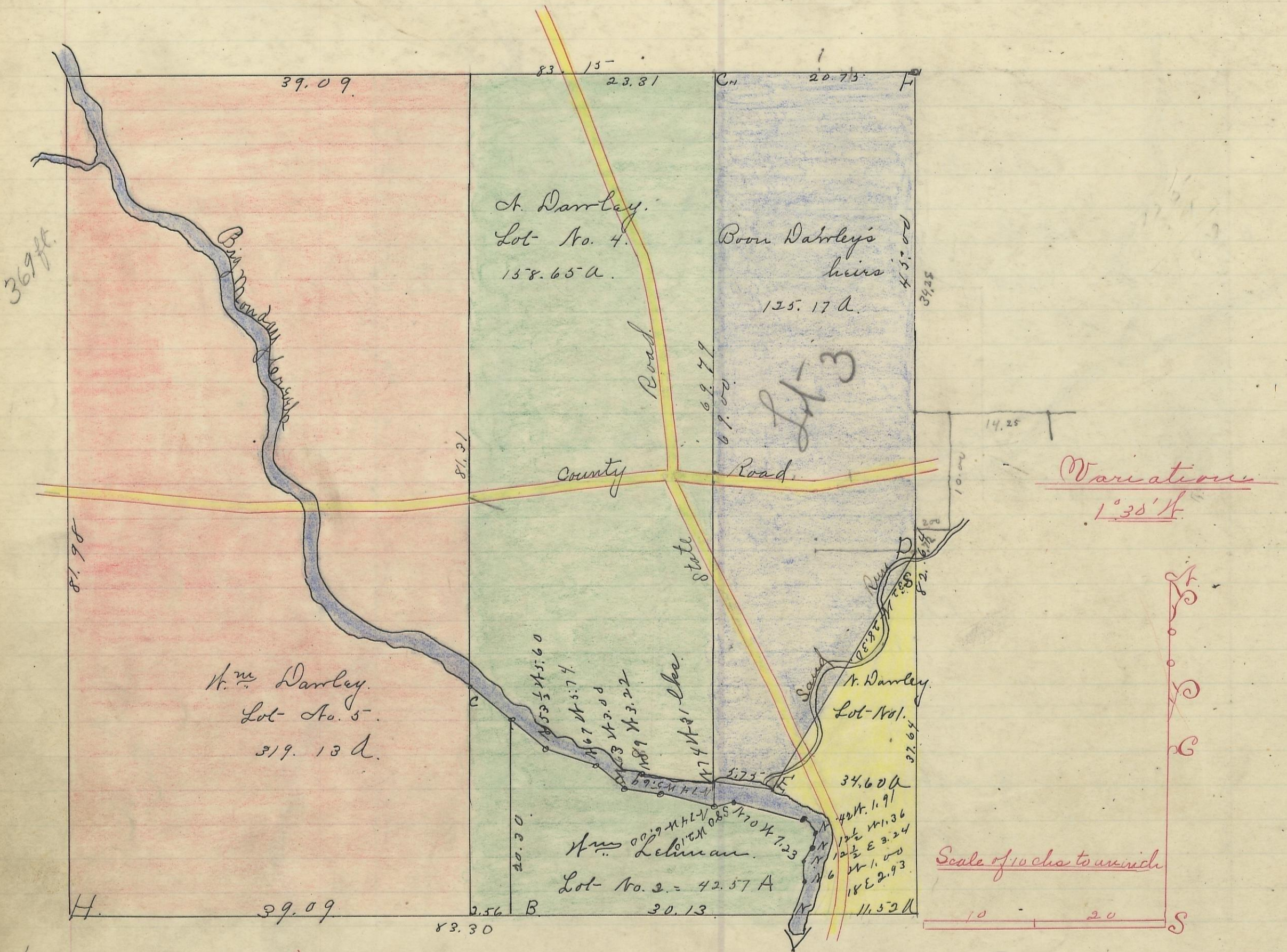


WARD, No. 13, Range 15, Section No. 34



Corner	Bearing	Tree	Diameter	Corner	Distances	Remarks
A	Hickory	14	N 19 1/2 E	19	Sec. corner	
B	Do.	20	N 56 E	23		
B	Hickory	18	S 60 W	21		
	Do.	11	N 30 W	2		
C	Maple	9	corn tree			
D	Poplar	30	N 49 W	36		
D	Beech	6	N 86 1/2 E	43		
E	Sycamore	13	N 60 W	9		
E	Elm	6	S 87 E	22		
F	W. Oak	22	S 44 E	22		
F	Beech	8	N 23 1/2 E	22		
G	Hickory	20	N 1 1/2 E	19		
G	Do.	23	S 84 W	12		
H	W. oak	24	S 9 W	16		
H	B. oak	40	N 27 E	86		
I	Cotton wood	14	S 46 E	149	In the creek	
I	B. walnut	10	N 4 W	95 1/2		

I hereby certify the above to be a correct Plat of Fractional Lots in Section No. 34, Township No. 13, Range No. 15 Ohio Company's Purchase,ocking County Ohio Surveyed 1869 By Levi Davis Sur. S. C. W.

Rec<sup>d</sup> for Record Jan'y 21<sup>st</sup> 1878  
Recorded Jan'y 22<sup>nd</sup> 1878.

Benj. White Rec<sup>d</sup> S. C. W.

The above Plat transferred from Plat Book "A" Page 211. Record of fractional lots S. C. W. July 30<sup>th</sup> 1901. and certified to be a true copy by O. D. Sloan, Recorder S. C. W.