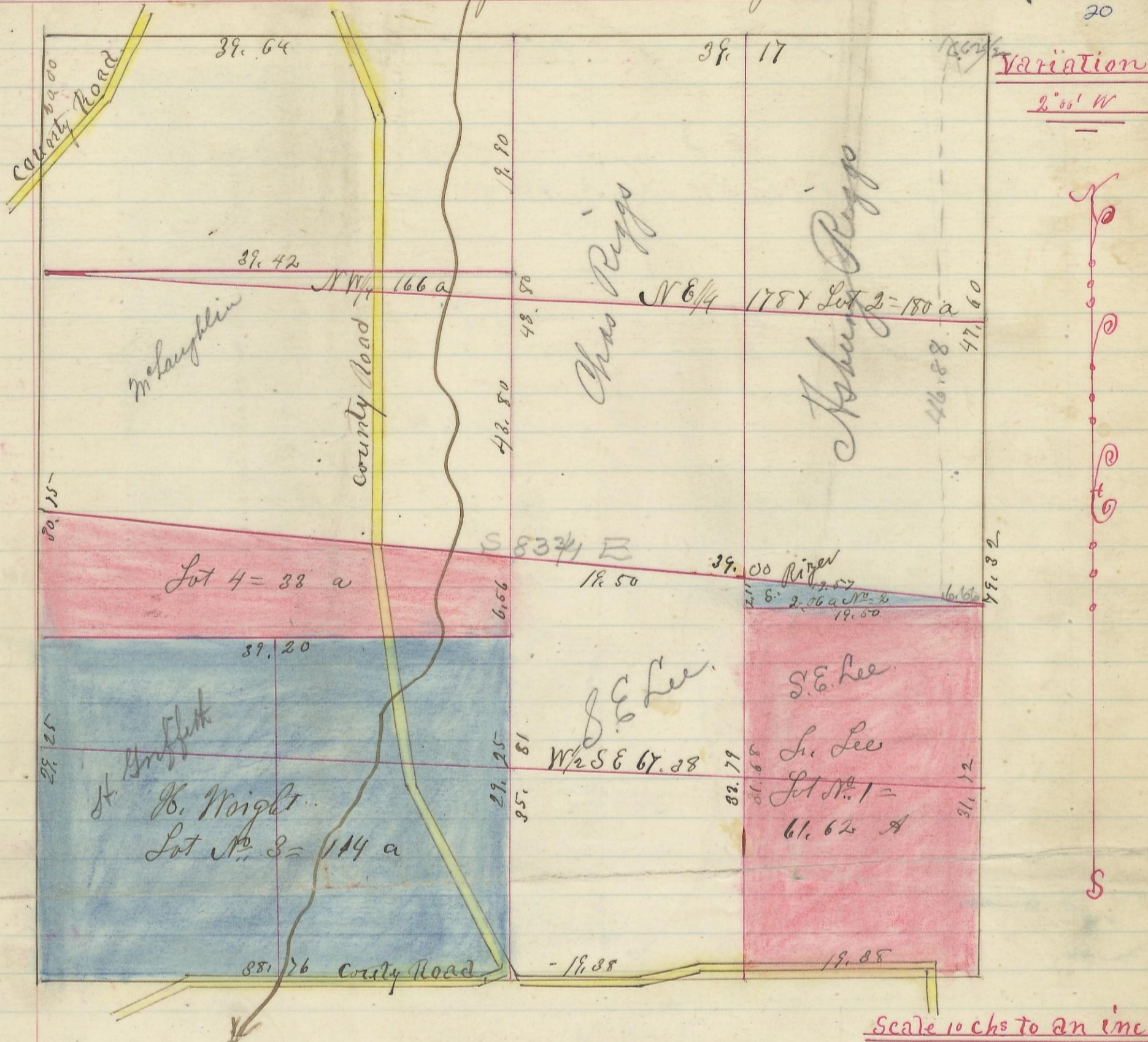


Section No. 35 Township No. 13 Range No. 17.

315

20



I hereby certify the above to be a correct Plat of fractional Lots in Section No. 35 Township No. 13 Range No. 17 Jackson County Ohio Surveyed 1870

By Levi Davis Surveyor.

Recd and Recorded Dec: 20<sup>th</sup> 1883

Jaab Weaver

Recorder.

46

|         |         |         |
|---------|---------|---------|
| 19.90   | 4380    | 6.625   |
| 43.80   | 6.86    | 6.6     |
| 6.86    | 50.36   | 39750   |
| 70.26   | 46.88   | 39750   |
|         | 66      | 437.250 |
| 39.17   | 28128   |         |
| 66      | 28128   |         |
| 23502   | 3094.08 |         |
| 23502   |         |         |
| 2585.22 |         |         |
| 1292.61 |         |         |
| 437.25  |         |         |
| 855.36  |         |         |