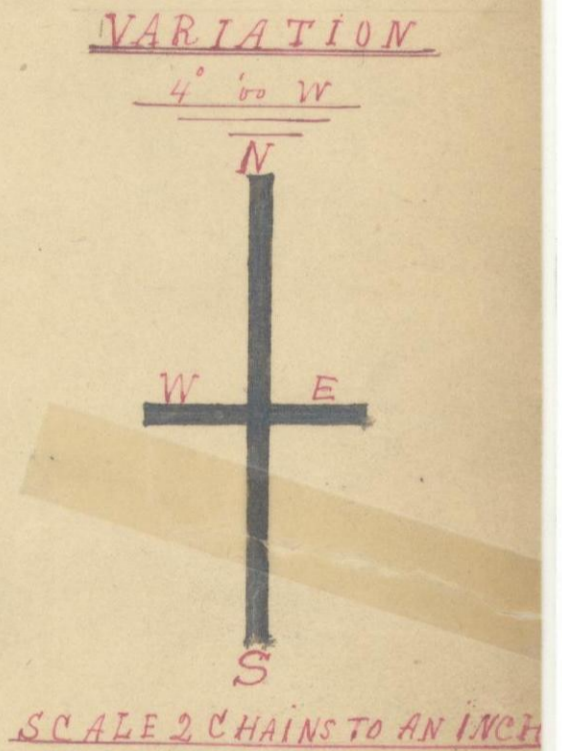
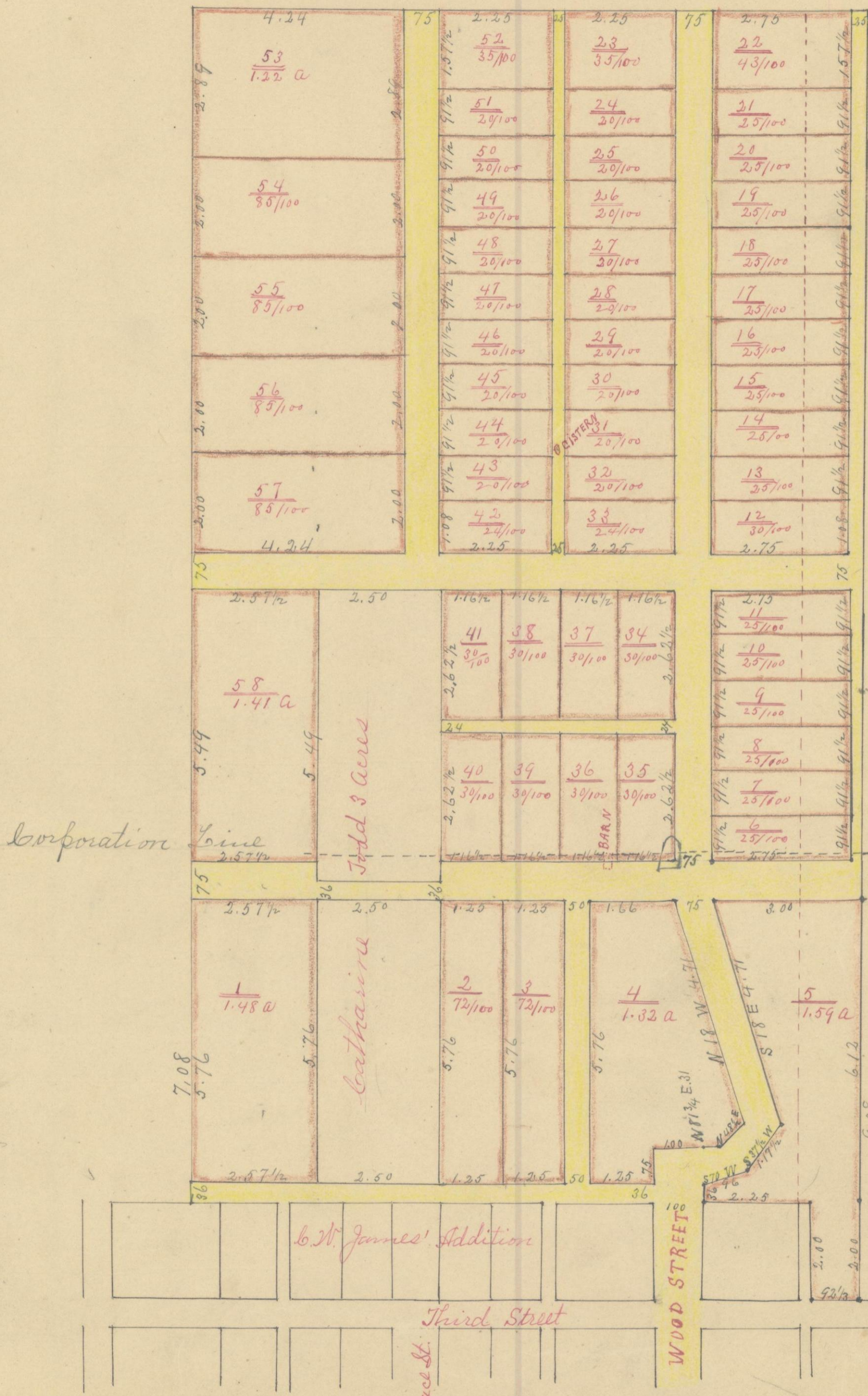


PLAT OF THE SUBDIVISION OF THE CULVER ESTATE



I certify the above to be a correct Plat of the subdivision of the Culver Estate being a part of Lots No 9 and 21 Section No 11 Township No. 14 Range No. 17, Hocking County Ohio said tracts contain 58 Lots as designated by the plat numbers from 1 to 58 the width and breadth of all Lots and width of rights of ways are written in links on the plat also the quantity they contain surveyed May 1893
 By James Davis, S. A. C.

Received June 6th 1893 at 10:40 o'clock A.M.