

Stone
NW Cor.
SW 1/4 Sec 16

HILDEBRANDT ALLOTMENT

Part SW 1/4 Sec 16 Falls Twp Hocking County

Scale 1"=100'

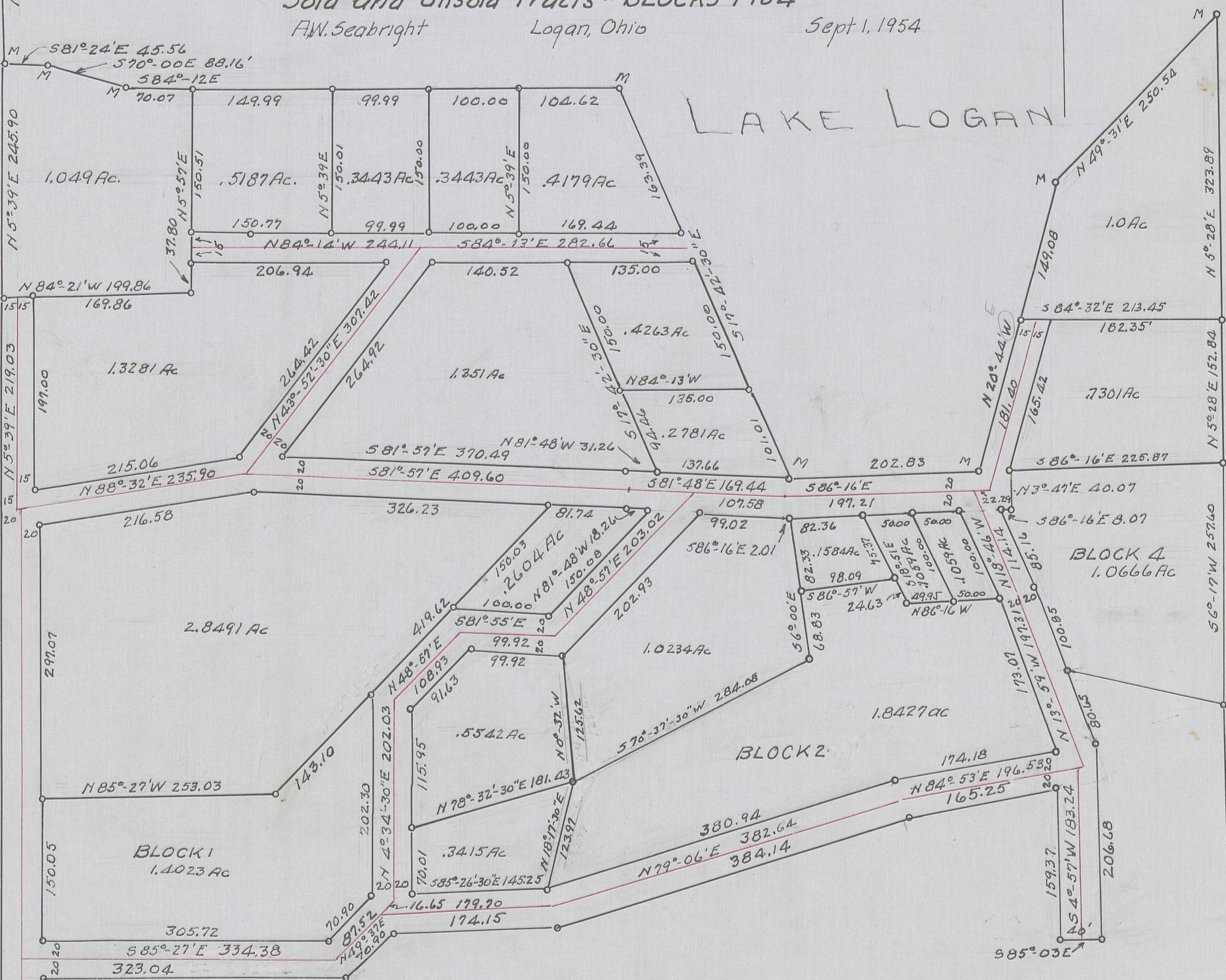
Shows Location and Widths of Private Lanes, Lots
Sold and Unsold Tracts - BLOCKS 1 to 4

A.W. Seabright

Logan, Ohio

Sept 1, 1954

LAKE LOGAN



RECORDED PLAT BOOK C; PAGE 1
AND PLAT CADNEY 1, Pg. 25 A

NOTE: THIS IS NOT THE ORIGINAL RECORDED PLAT
SEE RECORDER'S OFFICE.

N 5° 39' E 1156.61'
671.54

County Road