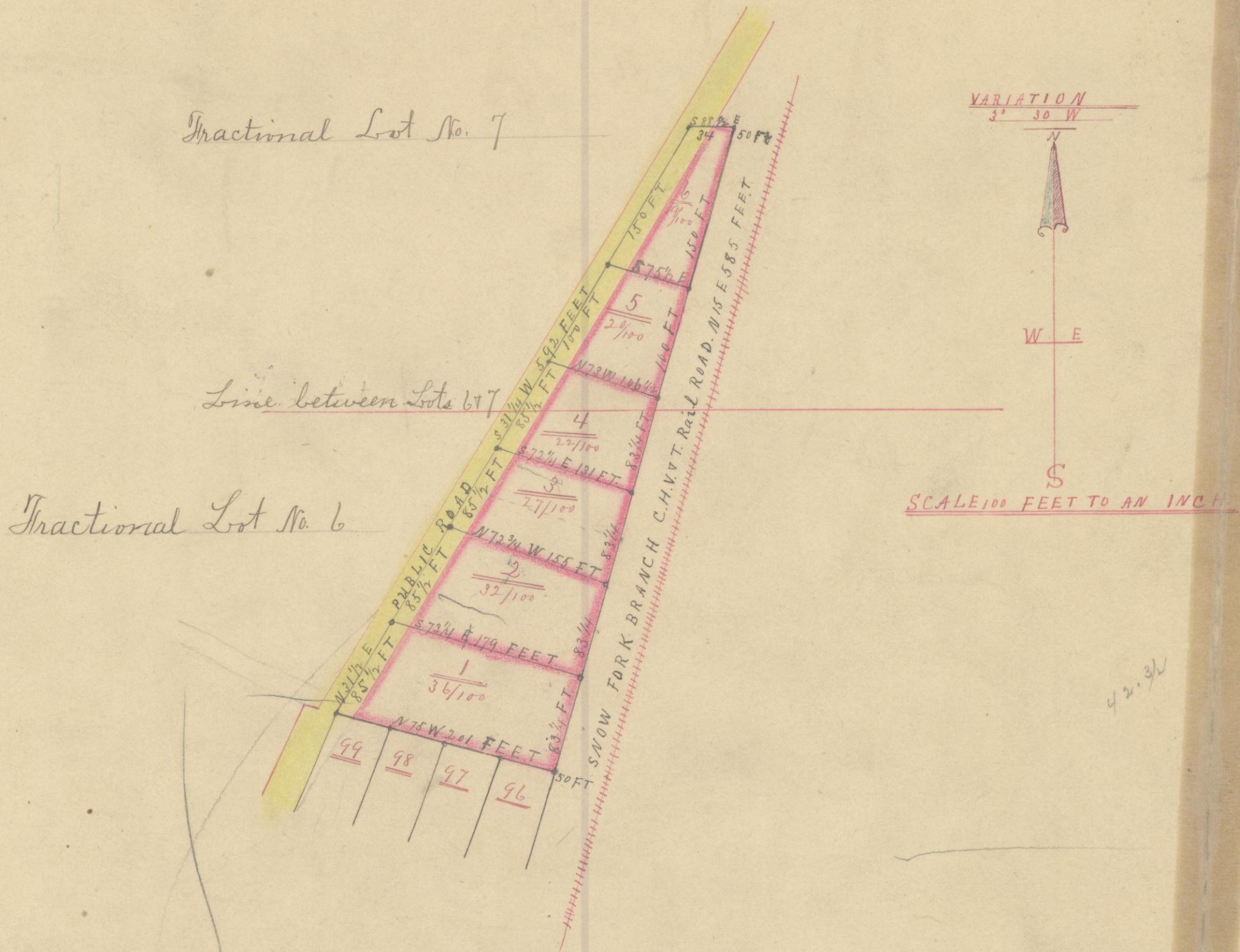


7



I certify the above to be a correct Plat of a subdivision of a part of Tract No. 677 Section No. 3 Township No. 13 Range No. 15 Ohio Company's Purchase Hocking county Ohio, said subdivision contains six lots numbering from 1 to 6 as designated by the plat the length and breadth of said lots are written in feet on the Plat. said subdivision beginning at the North East corner of Lot No. 96 in the Incorporated Village of Murray City thence by the courses and distances marked on the plat to beginning, containing 1.56 acres.

Surveyed October 10<sup>th</sup> 1891.  
By James Davis S. H. & C.

Received January 29<sup>th</sup> 1892 at 2 o'clock P.M.  
Recorded January 30<sup>th</sup> 1892.

D. M. O'Hare  
County Recorder

27