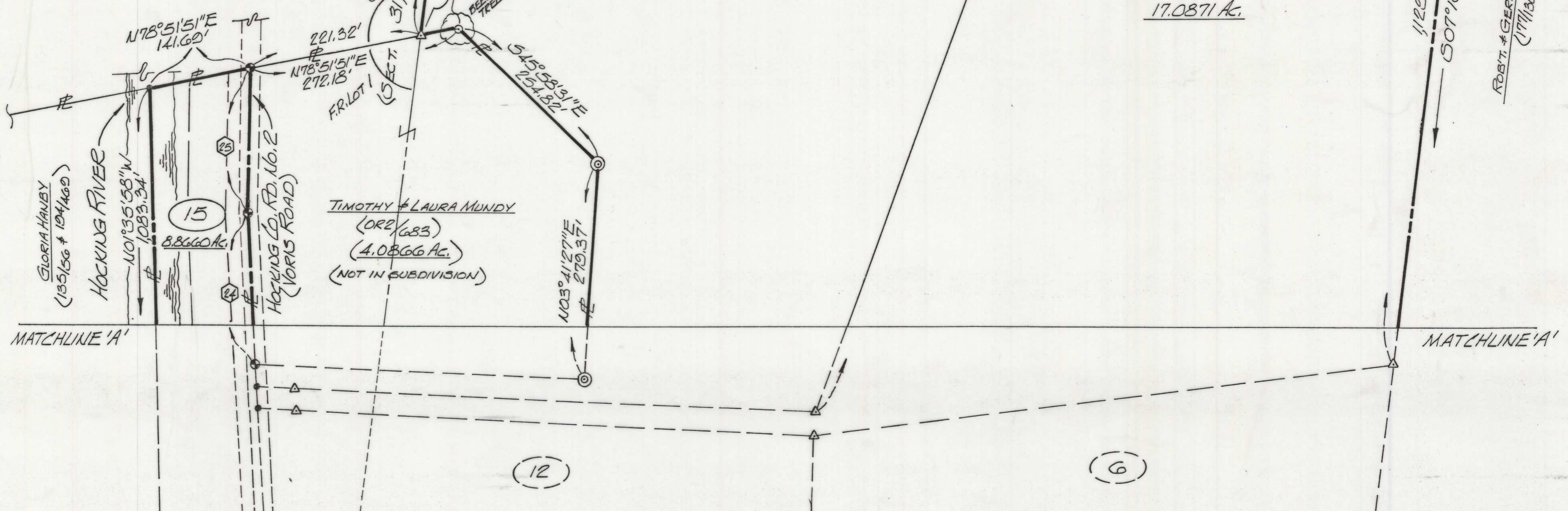
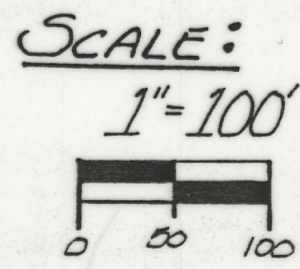


CENTERLINE VORIS ROAD TABLE

Course No.	Lot No.	Bearing	Distance
1	1/15	N 14°55'09" W	56.96'
2	1/15	N 12°06'49" W	93.03'
3	2/15	N 11°07'39" W	61.60'
4	2/15	N 10°38'52" W	88.40'
5	3/15	N 10°38'52" W	71.49'
6	3/15	N 11°38'57" W	78.50'
7	4/15	N 14°37'29" W	57.18'
8	4/15	N 19°10'04" W	42.82'
9	5/15	N 21°59'52" W	30.59'
10	6/15	N 24°29'01" W	30.88'
11	7/15	N 24°45'11" W	48.17'
12	7/15	N 23°20'41" W	75.72'
13	8/15	N 18°12'55" W	32.09'
14	8/15	N 13°55'44" W	31.65'
15	8/15	N 10°50'35" W	47.40'
16	8/15	N 08°15'21" W	43.84'
17	9/15	N 06°10'31" W	57.67'
18	9/15	N 05°10'33" W	87.37'
19	10/15	N 04°29'28" W	146.90'
20	11/15	N 03°58'20" W	146.91'
21	12/15	N 03°36'55" W	146.91'
22	13/15	N 03°36'55" W	30.16'
23	14/15	N 03°36'55" W	30.16'
24	15	N 03°00'10" W	197.06'
25	15	N 03°19'50" E	189.66'

SEE NOTES ON SHT. 1 OF 3



sheet	revisions		
3/3			
job	drawn	date	
M32031	EB	4/28/03	

**RIVER VIEW ESTATES
SUBDIVISION
RECORD PLAT**

seymour & assoc. consultants
(614) - 385 - 4349
69 s. market logan, ohio 43138