

20270

Received Jan 4 1963  
Recorded Jan 4 1963  
Book C Page 58  
Esther Carpenter  
County Recorder

CENTER LINE PLAT  
HOC - 33 - 0.09-0.24

373

THIS IMPROVEMENT HAS BEEN DECLARED  
A LIMITED ACCESS HIGHWAY FROM STATION  
19+60 TO STATION 225+00 BY ACTION OF  
THE DIRECTOR OF HIGHWAYS AND RECORDED  
IN VOLUME 47 PAGE 340 OF THE DIRECTORS  
JOURNAL PURSUANT TO LAW.

# CENTER LINE SURVEY PLAT

## LOGAN - LANCASTER ROAD

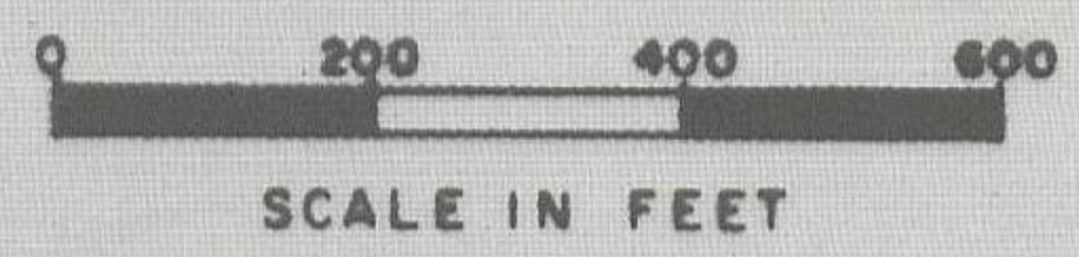
### U.S. ROUTE 33 SEC. 0.09-0.24

### HOCKING COUNTY, OHIO

GOOD HOPE TWP. R. 18, T. 13, SEC'S. 15, 22, 23

STATIONS AND OFFSETS WITHIN THE LIMITS  
OF CENTER LINE SURVEY SPIRALS ARE REFER-  
ENCED TO THE SPIRAL TANGENTS.

I HEREBY CERTIFY THAT THIS PLAT  
IS A TRUE DELINEATION OF A SURVEY  
MADE FOR THE OHIO DEPARTMENT OF  
HIGHWAYS IN 1962  
BY Louis Berger & Associates  
Orange, New Jersey  
SIGNED Henry A. Schimmel  
REGISTERED SURVEYOR  
REGISTRATION No. 1183



§ SURVEY CURVE DATA

PI =	61+04.03
Δ =	42°-33'-15"
D =	2°-30'
Ls =	400.00'
Ts =	1093.57'
Θs =	5°-00'
Lc =	1302.17'
Lt =	266.77'
St =	133.43'

CURVE DATA  
§ RELOC. S.R. 796

PI =	12+02.31
Δ =	28°-02'-45"
D =	14°-19'-26"
R =	400.00'
T =	99.90'
L =	195.80'

DATE December 12-1962

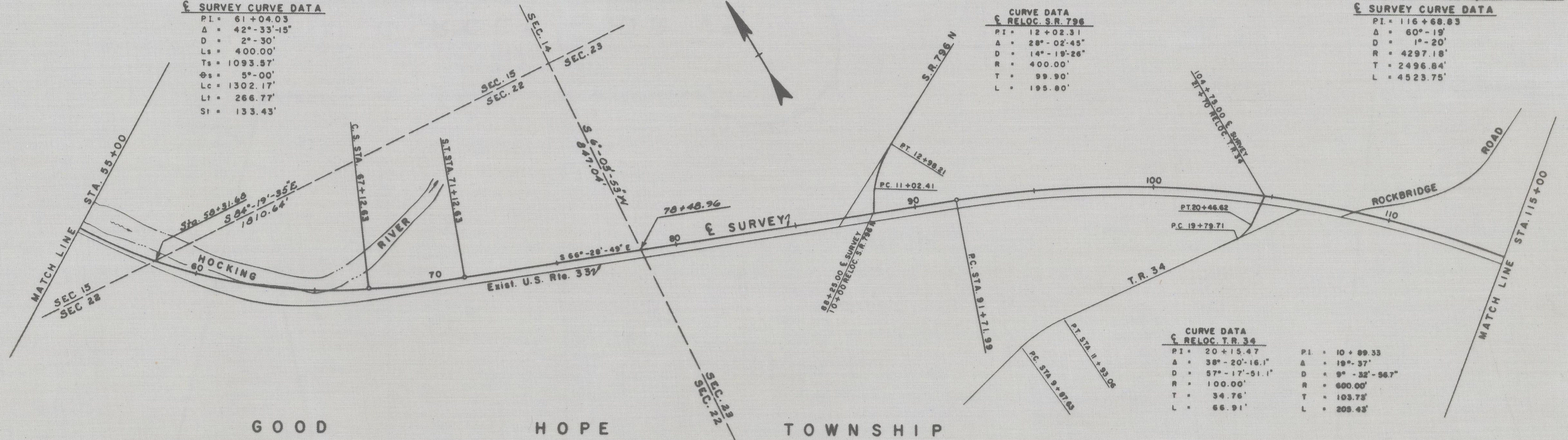
§ SURVEY CURVE DATA

PI =	116+68.83
Δ =	60°-19'
D =	1°-20'
R =	4297.18'
T =	2496.84'
L =	4523.75'

CURVE DATA  
§ RELOC. T.R. 34

PI =	20+15.47
Δ =	38°-20'-16.1"
D =	57°-17'-51.1"
R =	100.00'
T =	34.76'
L =	66.91'

PI =	10+89.33
Δ =	19°-37'
D =	9°-32'-56.7"
R =	600.00'
T =	103.75'
L =	208.43'



GOOD HOPE TOWNSHIP

REFERENCE MONUMENTS WILL BE SET  
ON THE CENTERLINE AT THE FOLLOWING  
STATIONS AFTER CONSTRUCTION

P.O.C. 60+00	P.O.T. 79+00	P.O.C. 100+00
C.S. 67+12.63	P.O.T. 85+00	P.O.C. 106+00
S.T. 71+12.63	P.C. 91+71.99	P.O.C. 110+00
P.O.T. 75+00	P.O.C. 95+00	

2