

#10122
 RECEIVED [Stamp] 1971 P.M.
 RECORDED [Stamp] 1971
 BOOK F PAGE 14
 Esther Carpenter
 COUNTY RECORDER

12468

CENTERLINE SURVEY PLAT

U.S. ROUTE 33 SECTION 14.68

HOCKING COUNTY, OHIO

GREEN TWP. T.13N., R.16W., SEC'S.13&7

STARR TWP. T.12N., R.16W., SEC.12

OHIO COMPANY SECOND PURCHASE

FED. RD. DIVISION	STATE	PROJECT
2	OHIO	

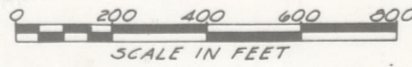
HOCKING COUNTY
 HOC-33-14.67
 LIMITED ACCESS
 R/W ACQUIRED AS HOC-33-14.67
 SHEET 2 OF 2

RECEIVED May 25 1972 2.50
 RECORDED May 25 1972
 BOOK F PAGE 15
 Esther Carpenter
 County Recorder

NOTE: Changes made on this plat pertain to the change in alignment of Township Road 336 and the monumentation of said road.

I hereby certify that this change in alignment of Township Road 336 is a true delineation of a survey made for the Ohio Department of Highways in 1972

William D. Lacey Date 5/23/72
 Reg. Sur. No. 5116



REFNO	BEARING	STATION
U.S.R-33		
5 to 10	52°33'56"E	
8		T.S. Sta 899+51.45
9		SC Sta 901+51.45
10		PI Sta 908+32.62
10 to 13	56°09'19"W	
11		C.S. Sta 915+87.49
12		ST Sta 917+87.49
13		POT Sta 924+61.99
U.S.R-33 NB		
14		T.S. Sta 899+47.05
14 to 16	52°33'56"E	
15		SC Sta 902+47.05
16		PI Sta 909+38.42
16 to 18	56°09'19"W	
17		C.S. Sta 915+83.09
18		ST Sta 918+83.09
TR-336		
64		PC Sta 99+76.63
64 to 65	54°23'46"W	
65		PI Sta 102+78.48
65 to 66	51°04'01"E	
66		PT Sta 105+32.26
67		PC Sta 106+60.68
68		PI Sta 111+70.30
68 to 70	56°06'25"W	
69		PT Sta 116+69.37
70		PC Sta 123+39.01
71		PT Sta 124+70.14

This improvement has been declared a Limited Access Highway by action of the Director of Highways on 4/21/70 and recorded in Volume 55, Page 289 of the Directors Journal, Pursuant to Law.

I hereby certify that this Plat is a true Delineation of a survey made for the Ohio Department of Highways in 1970 by Franklin Engineering Limited Columbus, Ohio.

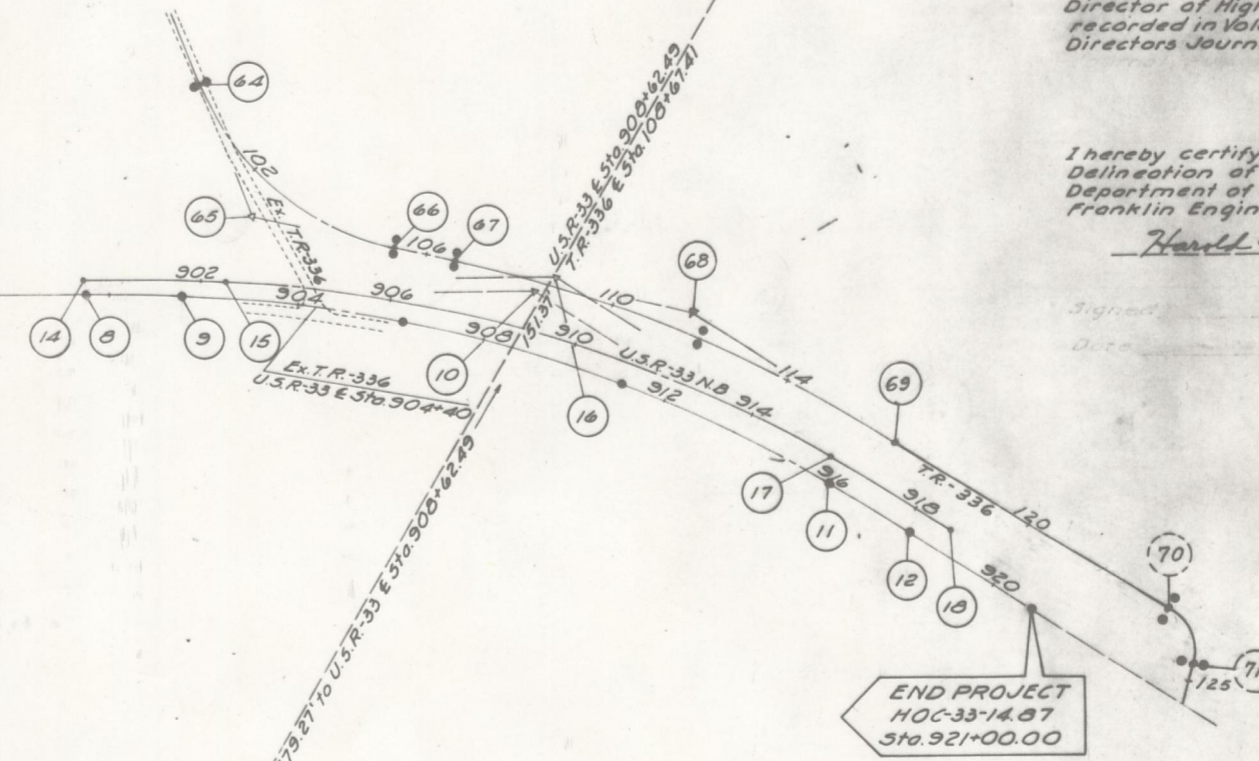
Harold E. Miles Date May 7, 1971
 Reg. Sur. No. 5592

NOTE: Curve with PC at 70 is temporary and will be replaced under PROJECT HOC-83-1734

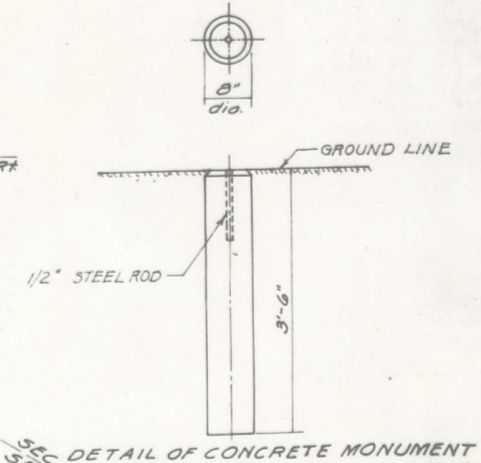
Match Line Sta. 870+00 See Sheet No. 55C-7 55C-15

CONCRETE CENTERLINE REFERENCE MONUMENTS TO BE PLACED AT THE FOLLOWING LOCATIONS DURING CONSTRUCTION	
U.S.R-33	TR-336
Sta. 870+00.00	Sta. 99+76.63 15' Lt. & 13' Rt.
Sta. 875+00.00	Sta. 105+32.26 16' Lt. & 13' Rt.
Sta. 880+00.00	Sta. 106+60.68 15' Lt. & 13' Rt.
Sta. 885+00.00	Sta. 112+00.00 15' Lt. & 17' Rt.
Sta. 890+00.00	Sta. 116+69.37 15' Lt. & 13' Rt.
Sta. 895+00.00	Sta. 123+39.01 15' Lt. & 13' Rt.
Sta. 899+51.45	Sta. 124+70.14 16' Lt. & 16' Rt.
Sta. 901+51.45	
Sta. 906+00.00	
Sta. 911+00.00	
Sta. 915+87.49	
Sta. 917+87.49	
Sta. 921+00.00	

10	16	65	68	71
U.S.R-33	U.S.R-33 NB	TR-336	TR-336	TR-336
CURVE DATA	CURVE DATA	CURVE DATA	CURVE DATA	CURVE DATA
PI Sta. 908+32.62	PI Sta. 909+38.42	PI Sta. 102+78.48	PI Sta. 111+70.30	PI Sta. 124+14
Δ = 32°43'15"	Δ = 32°43'15"	Δ = 55°33'47"	Δ = 20°10'26"	Δ = 69°30'
D = 2°00'00"	D = 2°00'00"	D = 10°00'00"	D = 2°00'00"	D = 53°00'
R = 2064.73'	R = 2064.73'	R = 572.96'	R = 2064.73'	R = 108.13'
L = 1436.04'	L = 1336.04'	L = 555.63'	L = 1008.69'	L = 131.13'
T = 941.17'	T = 991.37'	T = 301.85'	T = 500.62'	T = 74.99'
E = 121.50'	E = 122.26'	E = 74.65'	E = 44.97'	E = 23.46'
Δs = 2°00'00"	Δs = 3°00'00"			
Ls = 200.00'	Ls = 300.00'			
LT = 133.34'	LT = 200.03'			
ST = 66.67'	ST = 100.03'			



END PROJECT
 HOC-33-14.67
 Sta. 921+00.00



Item 004 Center Line Reference Monuments, shall be set by the Contractor as per sketch at left. Accuracy tolerance shall be ±0.02.