

# 28085

Received Dec. 2 1965  
Recorded Dec. 2 1965  
Book D Page 49  
Ester Carpenter  
County Recorder

CENTER LINE PLAT  
HOC - 33 - 4.21  
LIMITED ACCESS

270  
306  
1  
37

THIS IMPROVEMENT HAS BEEN DECLARED  
A LIMITED ACCESS HIGHWAY FROM STATION  
\_\_\_\_\_ TO STATION \_\_\_\_\_ BY ACTION OF  
THE DIRECTOR OF HIGHWAYS AND RECORDED  
IN VOLUME 47 PAGE 340 OF THE DIRECTORS  
JOURNAL PURSUANT TO LAW.

RELOC. CO RD 3  
REFERENCE MONUMENTS  
PI = 11+10.39  
POT = 19+75.00  
POT = 19+85.00  
MONUMENT ASSEMBLIES  
PC = 9+53.00  
PT = 12+52.11  
PC = 15+22.00

# CENTER LINE SURVEY PLAT

## LOGAN-LANCASTER ROAD

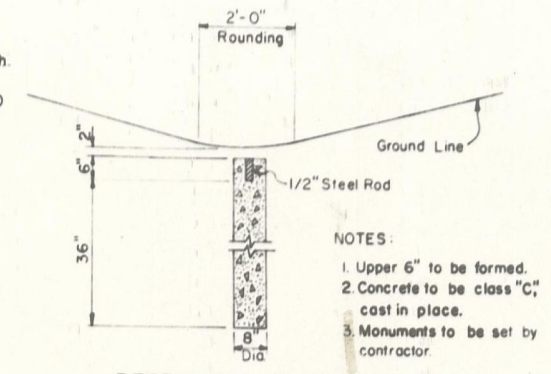
### U.S. ROUTE 33 SEC. HOC-33-4.21

### HOCKING COUNTY, OHIO

GOOD HOPE TWP., R-18-W, T-13-N, SEC. 25  
FALLS TWP., R-17-W, T-14-N, SEC. 6

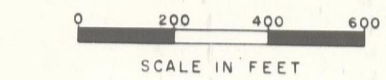
U.S.R. 33  
REFERENCE MONUMENTS  
POC = 222+50  
POC = 227+50  
CS = 232+17.74  
ST = 234+67.74 Bk + POT 3+97.90 Ah.  
POT = 9+00  
POT = 13+93 + POT 24+90 S.R. 180  
TS = 18+00  
SC = 21+00.06 Bk = 21+00 Ah.  
CS = 23+96.18  
ST = 26+96.24 Bk = 26+96.18 Ah.  
POT = 32+00  
POT = 37+00

S.R. 180  
REFERENCE MONUMENTS  
PC = 26+90.84  
POC = 29+50.00  
POT = 20+95.00



Q SURVEY CURVE DATA

P.I.	= 223 + 45.72
Δ	= 36°-49'-10"
Dc	= 1°-46'-46.9"
Ls	= 250.00'
Lc	= 1196.83'
Lt	= 1818.86'
Lm	= 2°-13'-27.7"
Lp	= 174.50'
Lq	= 166.68'
ST	= 83.39'



RELOC. S.R. 180 CURVE DATA

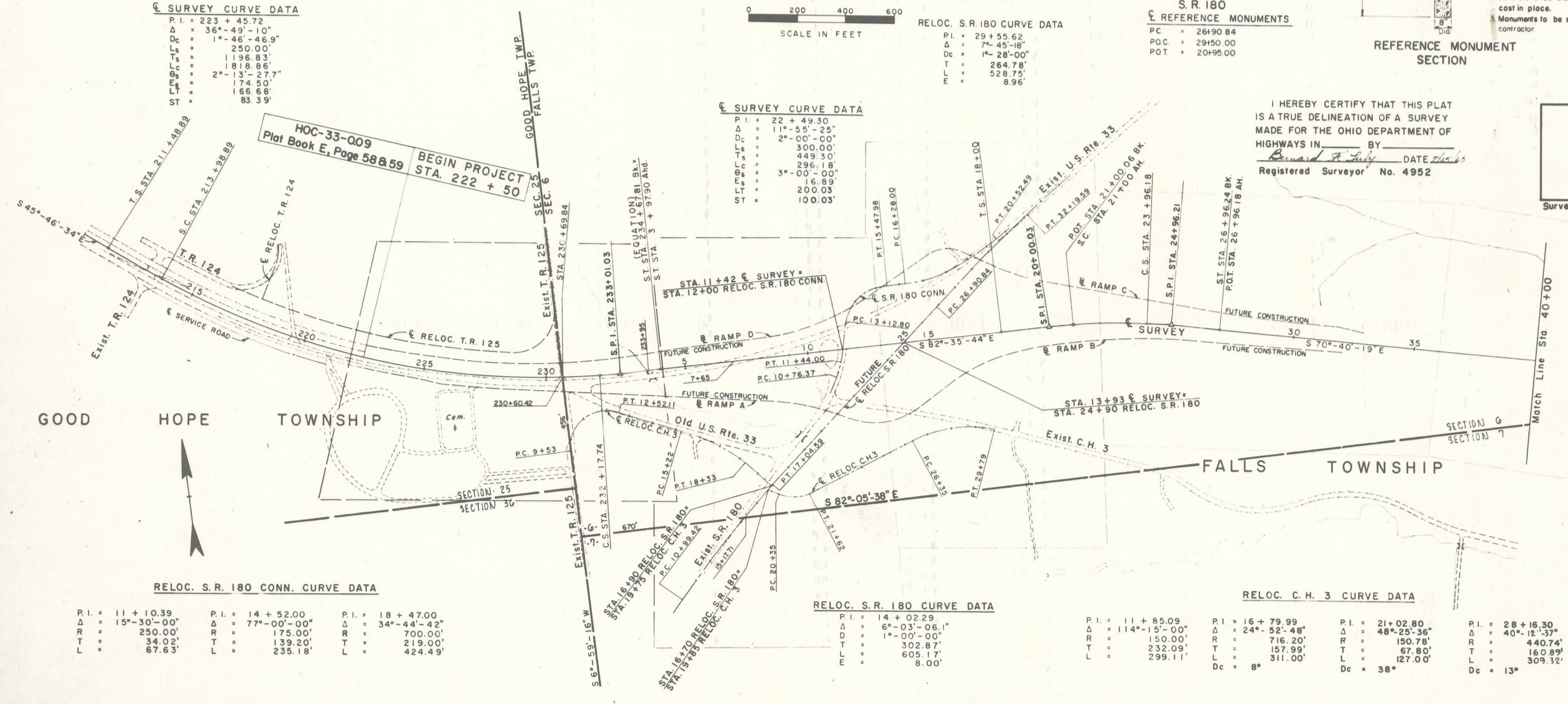
P.I.	= 29 + 55.62
Δ	= 7°-45'-18"
Dc	= 1°-28'-00"
Ls	= 296.18'
Lc	= 3°-00'-00"
Lt	= 16.89'
Lm	= 200.03'
ST	= 100.03'

Q SURVEY CURVE DATA

P.I.	= 22 + 49.30
Δ	= 11°-55'-25"
Dc	= 2°-00'-00"
Ls	= 300.00'
Lc	= 449.30'
Lt	= 296.18'
Lm	= 3°-00'-00"
Lp	= 16.89'
Lq	= 200.03'
ST	= 100.03'

I HEREBY CERTIFY THAT THIS PLAT  
IS A TRUE DELINEATION OF A SURVEY  
MADE FOR THE OHIO DEPARTMENT OF  
HIGHWAYS IN \_\_\_\_\_ BY \_\_\_\_\_  
Bernard H. July DATE 7/15/65  
Registered Surveyor No. 4952

Surveyor's Seal



RELOC. S.R. 180 CONN. CURVE DATA

P.I.	= 11 + 10.39	P.I.	= 14 + 52.00	P.I.	= 18 + 47.00
Δ	= 15°-30'-00"	Δ	= 77°-00'-00"	Δ	= 34°-44'-42"
R	= 250.00'	R	= 175.00'	R	= 700.00'
T	= 34.02'	T	= 139.20'	T	= 219.00'
L	= 67.63'	L	= 235.18'	L	= 424.49'

RELOC. S.R. 180 CURVE DATA

P.I.	= 14 + 02.29
Δ	= 6°-03'-06.1"
Dc	= 1°-00'-00"
Ls	= 302.87'
Lc	= 605.17'
ST	= 8.00'

RELOC. C.H. 3 CURVE DATA

P.I.	= 11 + 85.09
Δ	= 114°-15'-00"
R	= 150.00'
T	= 232.09'
L	= 299.11'

RELOC. C.H. 3 CURVE DATA

P.I.	= 16 + 79.99
Δ	= 24°-52'-48"
R	= 716.20'
T	= 157.99'
L	= 311.00'

RELOC. C.H. 3 CURVE DATA

P.I.	= 21 + 02.80
Δ	= 48°-25'-36"
R	= 150.78'
T	= 67.80'
L	= 127.00'