

THIS IMPROVEMENT HAS BEEN DECLARED A LIMITED ACCESS HIGHWAY FROM STATION TO STATION BY ACTION OF THE DIRECTOR OF HIGHWAYS AND RECORDED IN VOLUME 47 PAGE 340 OF THE DIRECTORS JOURNAL PURSUANT TO LAW.

CO. RD. 3 CONN.
 MONUMENT ASSEMBLIES
 P.C. = 10+79.28
 P.T. = 13+48.74
 P.O.T. = 15+55.00
 REFERENCE MONUMENTS
 P.I. = 12+22.68

REVISED CENTER LINE SURVEY PLAT

LOGAN-LANCASTER ROAD

U.S. ROUTE 33 SEC. HOC-33-4.21

HOCKING COUNTY, OHIO

FALLS TWP., R-7-W, T-14-N, SEC'S. 9, 10, 15, 16

Received 7-28-1970
 Recorded 7-28-1970
 Book E Page 27
 County Recorder

CENTER LINE PLAT
 HOC-33-4.21
 LIMITED ACCESS

306
 4
 37

STATIONS AND OFFSETS WITHIN THE LIMITS OF CENTER LINE SURVEY SPIRALS ARE REFERENCED TO THE SPIRAL TANGENTS.

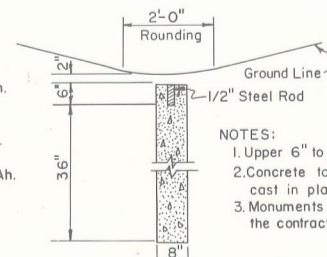
NOTE:

The re-recording of this center line plat is for purpose of correcting the centerline plat recorded in Book 0 Page 52

The change in location, type & number of centerline, reference monuments.

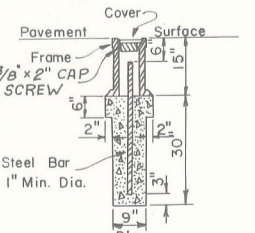
#6757
 RECEIVED 7-28-1970
 RECORDED 7-28-1970
 BOOK E PAGE 27
 Esther Carpenter
 COUNTY RECORDER

U.S.R. 33
 REFERENCE MONUMENTS
 P.O.C. = 162+00
 C.S. = 166+16.25
 S.T. = 169+16.31 Bk. = 169+16.25 Ah.
 P.O.T. = 173+00
 T.S. = 176+15.14
 S.C. = 180+15.43 Bk. = 180+15.14 Ah.
 C.S. = 183+37.96
 S.T. = 187+38.25 Bk. = 187+37.96 Ah.
 P.O.T. = 187+88.80
 P.O.T. = 192+00
 P.O.T. = 197+00
 P.O.T. = 202+00
 P.O.T. = 206+00
 T.S. = 209+89.99
 S.C. = 213+90.19 Bk. = 213+89.99 Ah.
 P.O.C. = 218+00



NOTES:
 1. Upper 6" to be formed.
 2. Concrete to be class "C", cast in place.
 3. Monuments to be set by the contractor.

REFERENCE MONUMENT SECTION
 SOUTH BLVD
 MONUMENT ASSEMBLIES



MONUMENT ASSEMBLY SECTION

S.R. 664
 REFERENCE MONUMENTS
 P.O.C. = 16+36 NON PERFORMED
 P.T. = 22+95.88
 T.S. = 23+85.07
 T.H. 52A
 MONUMENT ASSEMBLIES
 P.C. = 4+91.24 P.O.T. = 12+20
 P.I. = 6+85.52 P.O.T. = 15+00
 P.T. = 8+47.28

REFERENCE MONUMENTS
 P.O.T. = 1+20.00 NON PERFORMED
 P.C. = 5+37.00
 P.T. = 6+79.68
 REFERENCE MONUMENTS
 P.I. = 6+14.25

SURVEY CURVE DATA
 P.I. = 156 + 62.68
 Δ = 46°-59'-20"
 Dc = 2°-00'-00"
 Ls = 300.00'
 Ts = 1395.87'
 Lc = 2049.44'
 Es = 3°-00'-00"
 Es = 260.38'
 LT = 200.03'
 ST = 100.03'

SURVEY CURVE DATA
 P.I. = 220 + 77.16
 Δ = 42°-16'-35"
 Dc = 3°-00'-00"
 Ls = 400.00'
 Ts = 1087.17'
 Lc = 1291.06'
 Es = 5°-00'-00"
 Es = 168.47'
 LT = 266.77'
 ST = 133.43'

C.H. 3 CONN. CURVE DATA
 P.I. = 12 + 22.68
 Δ = 48°-30'-10"
 D = 18°-00'-00"
 R = 318.31'
 T = 143.40'
 L = 269.46'

SURVEY CURVE DATA
 P.I. = 181 + 81.52
 Δ = 21°-41'-05"
 Dc = 3°-00'-00"
 Ls = 400.00'
 Ts = 566.38'
 Lc = 322.82'
 Es = 6°-00'-00"
 Es = 38.26'

S.R. 664 CONN. CURVE DATA
 P.I. = 3 + 97.01
 Δ = 43°-19'-56"
 D = 11°-00'-00"
 R = 520.87'
 T = 206.92'
 L = 393.93'

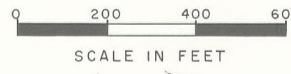
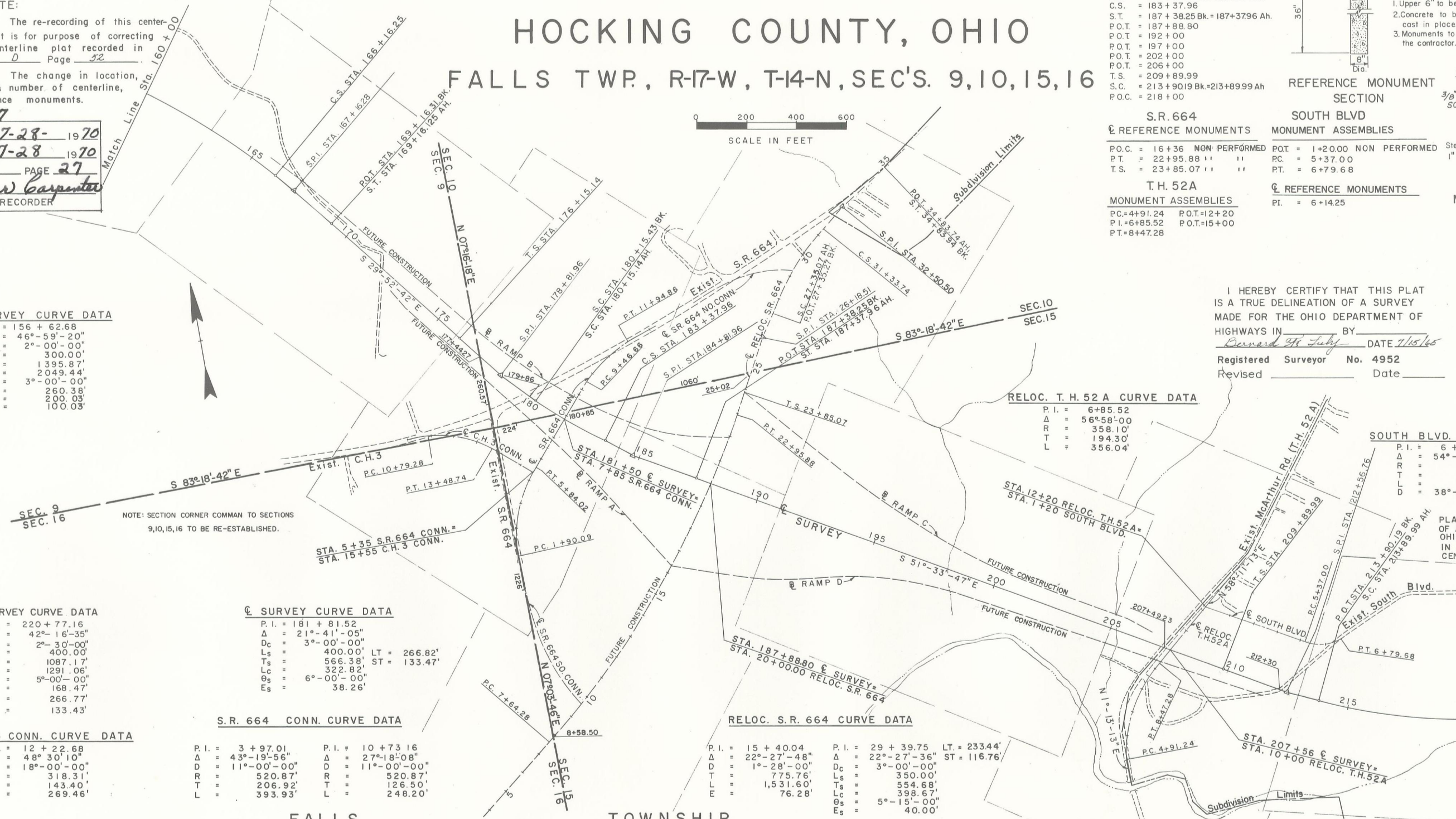
STA. 5+35 S.R. 664 CONN.
 STA. 15+55 C.H. 3 CONN.

RELOC. T.H. 52A CURVE DATA
 P.I. = 6+85.52
 Δ = 56°-58'-00"
 R = 358.10'
 T = 194.30'
 L = 356.04'

SOUTH BLVD. CURVE DATA
 P.I. = 6 + 14.25
 Δ = 54°-30'-00"
 R = 150.00'
 T = 77.25'
 D = 38°-11'-50"

I HEREBY CERTIFY THAT THIS PLAT IS A TRUE DELINEATION OF A SURVEY MADE FOR THE OHIO DEPARTMENT OF HIGHWAYS IN 1970 FOR REVISING THE CENTERLINE.

BY *William H. Sacy*
 REGISTERED SURVEYOR, JR.
 NO. 5116 DATE 7/13/70



FALLS

TOWNSHIP

CENTER LINE SURVEY PLAT