

Received _____ Time _____
 Recorded _____
 Plat Book _____ Page _____
 Signed _____ Recorder, Fairfield Co., Ohio
 Fee _____ Paid _____

8340 Fee \$1.00

Received Sept. 10, 1958 Time 10:31 A.M.
 Recorded Sept. 10, 1958
 Plat Book C Page 36
 Signed Esther Carpenter Recorder, Hocking Co., Ohio
 Fee 1.00 Paid 9/10/58

LOCATION PLAN

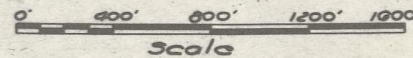
U.S.R.~33~19.04 FAIRFIELD COUNTY

U.S.R.~33~0.00 HOCKING COUNTY

LOGAN~LANCASTER ROAD

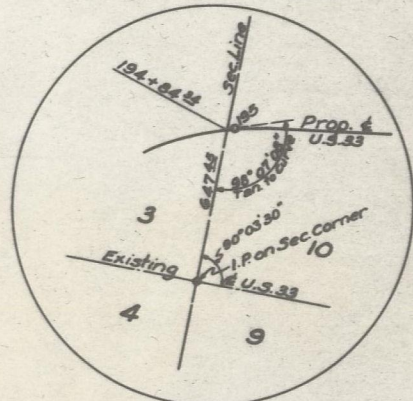
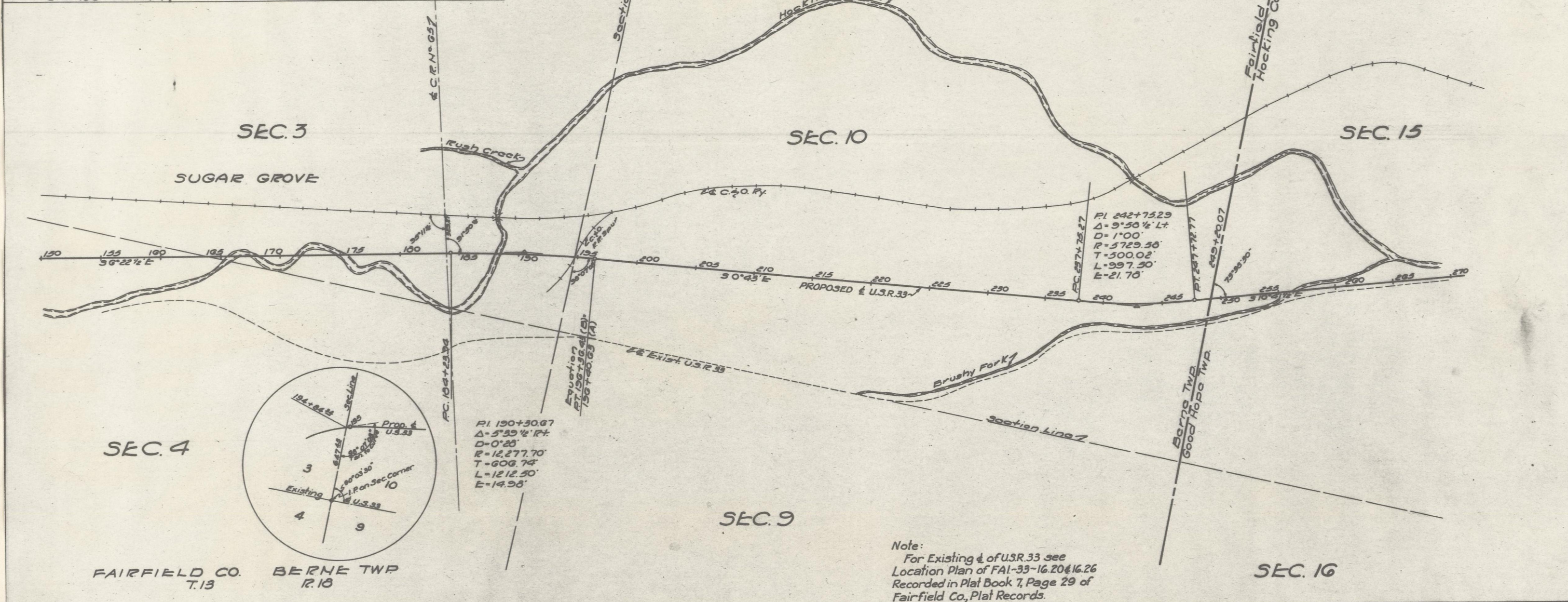
LIMITED ACCESS

Note: ~ This Instrument Prepared by the Dept. of Hwys. under the Supervision of F.B. Chappeler, P.E. No. 9347
 Signed ~ F.B. Chappeler
 Registered Surveyor No. 1560
 Resident Division Deputy Director
 Date ~ 9/9/58



REFERENCE MONUMENTS WILL BE SET ON THE E
 AT THE FOLLOWING STATIONS AFTER CONSTRUCTION

P.O.T. Sta. 155+00	P.O.T. Sta. 200+00	P.C. Sta. 237+75.27
P.O.T. Sta. 160+00	P.O.T. Sta. 205+00	P.C.C. Sta. 242+50
P.O.T. Sta. 165+00	P.O.T. Sta. 210+00	P.T. Sta. 247+72.77
P.O.T. Sta. 170+00	P.O.T. Sta. 215+00	P.O.T. Sta. 250+00
P.O.T. Sta. 175+00	P.O.T. Sta. 220+00	P.O.T. Sta. 255+00
P.O.T. Sta. 180+00	P.O.T. Sta. 225+00	P.O.T. Sta. 260+00
P.C. Sta. 184+23.94	P.O.T. Sta. 230+00	P.O.T. Sta. 265+00
P.C.C. Sta. 190+00	P.O.T. Sta. 235+00	P.O.T. Sta. 270+00
P.T. Sta. 196+36.43(B)		
= Sta. 196+40.63(A)		



Note:
 For Existing E. of U.S.R. 33 see
 Location Plan of FAI-33-16.20 & 16.26
 Recorded in Plat Book 7, Page 29 of
 Fairfield Co., Plat Records.