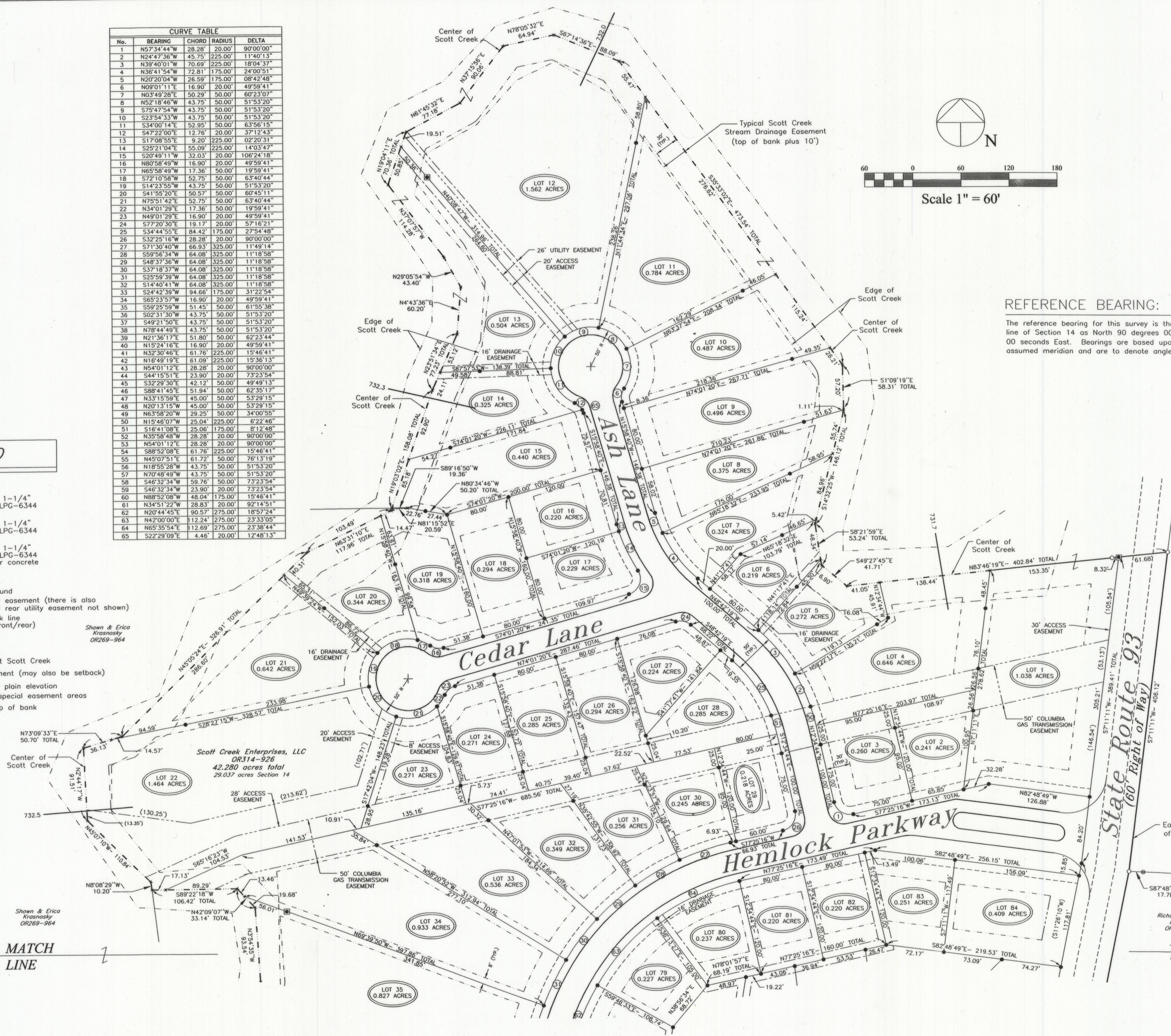


CURVE TABLE				
No.	BEARING	CHORD	RADIUS	DELTA
1	N57°34'44"W	28.28'	20.00'	90°00'00"
2	N24°47'36"W	45.75'	225.00'	11°40'13"
3	N39°40'01"W	70.69'	225.00'	18°04'37"
4	N36°41'54"W	72.81'	175.00'	24°00'51"
5	N20°20'04"W	26.59'	175.00'	08°42'48"
6	N09°01'11"E	16.90'	20.00'	49°59'41"
7	N03°49'28"E	50.29'	50.00'	60°23'07"
8	N52°18'46"W	43.75'	50.00'	51°53'20"
9	S75°47'54"W	43.75'	50.00'	51°53'20"
10	S23°54'33"W	43.75'	50.00'	51°53'20"
11	S34°00'14"E	52.95'	50.00'	63°56'15"
12	S47°22'00"E	12.76'	20.00'	37°12'43"
13	S17°08'55"E	9.20'	225.00'	02°20'31"
14	S25°21'04"E	55.09'	225.00'	14°03'47"
15	S20°48'11"W	32.03'	20.00'	108°24'18"
16	N80°58'49"W	16.90'	20.00'	49°59'41"
17	N65°58'49"W	17.36'	50.00'	19°59'41"
18	S72°10'58"W	52.75'	50.00'	63°40'44"
19	S14°23'55"W	43.75'	50.00'	51°53'20"
20	S41°55'20"E	50.57'	50.00'	60°45'11"
21	N75°51'42"E	52.75'	50.00'	63°40'44"
22	N34°01'29"E	17.36'	50.00'	19°59'41"
23	N49°01'29"E	16.90'	20.00'	49°59'41"
24	S77°20'30"E	19.17'	20.00'	57°16'21"
25	S34°44'55"E	84.42'	175.00'	27°54'48"
26	S32°25'16"W	28.28'	20.00'	90°00'00"
27	S71°30'40"W	66.93'	325.00'	11°40'13"
28	S59°56'34"W	64.08'	325.00'	11°18'58"
29	S48°37'36"W	64.08'	325.00'	11°18'58"
30	S37°18'37"W	64.08'	325.00'	11°18'58"
31	S25°59'39"W	64.08'	325.00'	11°18'58"
32	S14°40'41"W	64.08'	325.00'	11°18'58"
33	S24°42'39"W	94.66'	175.00'	31°22'54"
34	S65°23'57"W	16.90'	20.00'	49°59'41"
35	S59°25'59"W	51.45'	50.00'	61°55'38"
36	S02°31'30"W	43.75'	50.00'	51°53'20"
37	S49°21'50"E	43.75'	50.00'	51°53'20"
38	N78°44'49"E	43.75'	50.00'	51°53'20"
39	N21°36'17"E	51.80'	50.00'	62°23'44"
40	N15°24'16"E	16.90'	20.00'	49°59'41"
41	N32°30'46"E	61.76'	225.00'	15°46'41"
42	N16°49'19"E	61.09'	225.00'	15°36'13"
43	N54°01'12"E	28.28'	20.00'	90°00'00"
44	S44°15'51"E	23.90'	20.00'	73°23'54"
45	S32°29'30"E	42.12'	50.00'	49°49'13"
46	S88°41'43"E	51.94'	50.00'	62°35'17"
47	N33°15'59"E	45.00'	50.00'	53°29'15"
48	N20°13'15"W	45.00'	50.00'	53°29'15"
49	N63°58'20"W	29.25'	50.00'	34°00'55"
50	N15°46'07"W	25.04'	225.00'	6°22'46"
51	S16°41'08"E	25.06'	175.00'	81°24'48"
52	N35°58'48"W	28.28'	20.00'	90°00'00"
53	N54°01'12"E	28.28'	20.00'	90°00'00"
54	S88°52'08"E	61.76'	225.00'	15°46'41"
55	N45°07'51"E	61.72'	50.00'	76°13'19"
56	N18°55'28"W	43.75'	50.00'	51°53'20"
57	N70°48'49"W	43.75'	50.00'	51°53'20"
58	S48°32'34"W	58.76'	50.00'	73°23'54"
59	S46°32'34"W	23.90'	20.00'	73°23'54"
60	N88°52'08"W	48.04'	175.00'	15°46'41"
61	N34°51'22"W	28.83'	20.00'	92°14'51"
62	N20°44'45"E	90.57'	275.00'	18°57'24"
63	N42°00'00"E	112.24'	275.00'	23°33'05"
64	N65°35'54"E	112.69'	275.00'	23°38'44"
65	S22°29'09"E	4.46'	20.00'	12°48'13"

LEGEND

- × Point
- 5/8" x 30" iron pin with 1-1/4" plastic ID cap stamped LPG-6344 set or previously set
- 5/8" x 30" iron pin with 1-1/4" plastic ID cap stamped LPG-6344 to be set
- 5/8" x 30" iron pin with 1-1/4" plastic ID cap stamped LPG-6344 to be set in 6" diameter concrete
- 5/8" iron pin found
- 1" iron pin found
- 1-1/4" OD iron pipe found
- 10' front utility easement (there is also an 8' side and rear utility easement not shown)
- Building setback line (8' side, 30' front/rear)
- Section line
- Property line
- Property line at Scott Creek
- Drainage easement (may also be setback)
- 100 year flood plain elevation
- Non buildable special easement areas
- Scott Creek top of bank

Shawn & Erica Krasnosky OR269-964

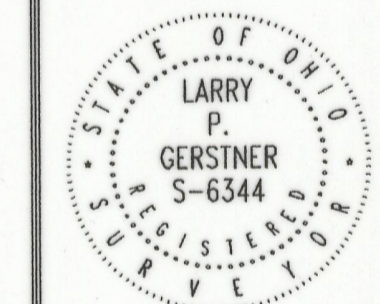


MATCH LINE

SHEET 2
SHEET 3

**Larry P. Gerstner
Engineering & Surveying**
9 East Second Street, Suite A, Logan, Ohio 43138
(740) 385-4260

**SCOTT CREEK ESTATES
STATE ROUTE 93
LOGAN, OHIO**
Plat of Survey - North



Larry P. Gerstner
OH P.E. #6344
OH P.S. #39713

REVISIONS	
NO.	DATE
06/30/05	08/28/06
07/19/05	
04/10/06	
05/02/06	
08/01/06	

Scale: 1" = 60'

JOB NO.	DRAWN BY	DATE
1867	BAC	21 Jun 05

