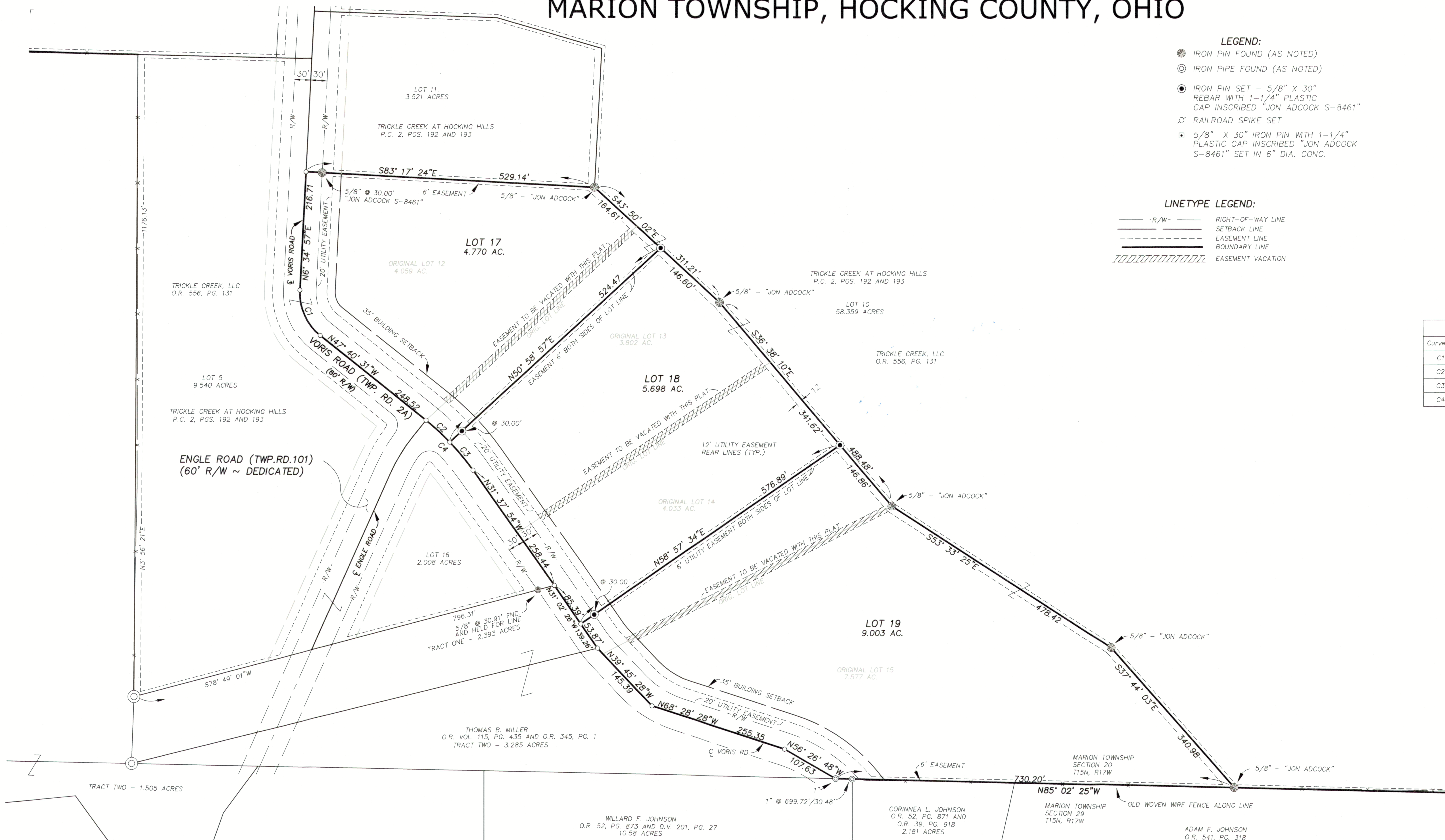
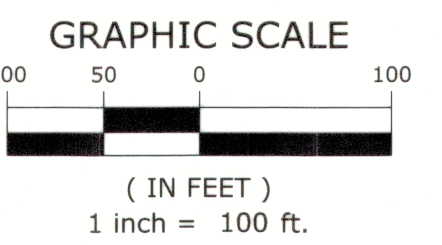
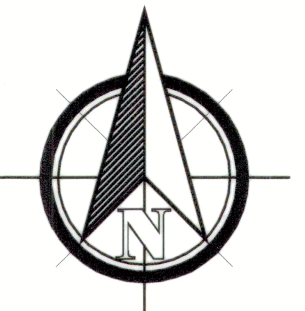


TRICKLE CREEK AT HOCKING HILLS

REPLAT OF LOTS 12, 13, 14 AND 15
BEING A SUBDIVISION OF 19.471 ACRES
NOW TO BE KNOWN AS LOTS 17, 18 AND 19

SITUATED IN THE SOUTHERLY 1/2 OF SECTION 20, TOWNSHIP 15, RANGE 17, CONGRESS LANDS
MARION TOWNSHIP, HOCKING COUNTY, OHIO



- LEGEND:**
- IRON PIN FOUND (AS NOTED)
 - ⊙ IRON PIPE FOUND (AS NOTED)
 - ⊙ IRON PIN SET - 5/8" X 30" REBAR WITH 1-1/4" PLASTIC CAP INSCRIBED "JON ADCOCK S-8461"
 - ⊙ RAILROAD SPIKE SET
 - ⊙ 5/8" X 30" IRON PIN WITH 1-1/4" PLASTIC CAP INSCRIBED "JON ADCOCK S-8461" SET IN 6" DIA. CONC.

- LINETYPE LEGEND:**
- R/W — RIGHT-OF-WAY LINE
 - SETBACK LINE
 - - - EASEMENT LINE
 - ==== BOUNDARY LINE
 - ||||| EASEMENT VACATION

BASIS OF BEARINGS:
BEARINGS SHOWN HEREON ARE BASED ON GPS OBSERVATIONS, BEING THE OHIO STATE PLANE COORDINATE SYSTEM, SOUTH ZONE, NAD 1983.

Curve Table					
Curve #	Radius	Delta	Length	Chord Direction	Chord Length
C1	100.00	54° 15' 28"	94.70'	N20° 32' 47"W	91.20'
C2	450.00	7° 33' 27"	59.36'	N43° 53' 48"W	59.31'
C3	450.00	8° 29' 10"	66.65'	N35° 52' 29"W	66.59'
C4	450.00	16° 02' 37"	126.01'	N39° 39' 13"W	125.60'

8439 Voris Road
Logan, OH 43138
Contact: Brett Adcock
(740) 654-0600 - Lancaster
(614) 837-0800 - Columbus
www.americanlandsurveyors.com

ALS AMERICAN LAND SURVEYORS

Focused on Excellence

2/2

FIELD	DRAFT	CHECK
JBA	JBA	JBA
JOB NO.:		
DATE: JANUARY 5, 2022		
SCALE: 1"=100'		